



# **Nebraska LB 1173 Reimagining Child and Family Well- Being in Nebraska**

**LB 1173 Statutory Workgroup  
Meeting March 13, 2023**



# Agenda

- Roll Call/Introductions
- Approval of the Agenda (Action Item)
- Overview and LB 1173/Role of Workgroup
- Child Welfare Practice and Finance Model - State Examples
- Report Framework
- Workgroup Meeting Calendar (Action Item)
- Highlights of LB 1173 Kickoff/Report/Discussion
- Finance Framework and Approach
- Vision/Mission/Practice Priorities and Goals
- Workgroup Open Forum
- Public Comment
- Upcoming meeting/Wrap Up
- Adjourn



# Overview of LB 1173



# LEGISLATIVE BILL 1173

- Establish an **intersectoral** child welfare practice model work group;
- Establish appropriate strategic leadership and guidance for **practice and finance model development** from across the three branches of government; and
- **Appropriate funds** for contractual support to build the practice and finance model for Nebraska.



# LEGISLATIVE BILL 1173

The Legislature has determined that this comprehensive transformation will require an **integrated model** addressing all aspects of the system and strong partnerships among the legislative, executive, and judicial branches of government and **community stakeholders**.



# LEGISLATIVE BILL 1173

## Intersectoral child welfare practice model work group task:

Develop a **practice and finance model** for child welfare system transformation in Nebraska, with consultation from **key stakeholders**, judges from separate juvenile courts and judges of county courts sitting as juvenile courts, private child welfare providers, **individuals with lived experience** in the child welfare system, the Nebraska Children's Commission, the Inspector General of Nebraska Child Welfare, the Foster Care Review Office, child advocacy centers, law enforcement, and county attorneys.



# LEGISLATIVE BILL 1173

**The practice and finance model shall include, but not be limited to:**

- Development of a statewide mission and vision for the child welfare system in Nebraska;
- Development of values and practice priorities for the child welfare system in Nebraska;
- Development of statewide program goals and a practice and finance model for child welfare system case management and service delivery;
- Development of engagement strategies to support community involvement in child welfare system transformation;
- Development of strategies that strengthen relationships across the court system, probation, executive branch agencies, the State Department of Education, and community partners;

# LEGISLATIVE BILL 1173



**The practice and finance model shall include, but not be limited to (cont.):**

- Development of strategies that support integration across agencies;
- Development of accountabilities across the entire child welfare system;
- Evaluation of the state's Title IV-E claiming practices and identification of appropriate steps to optimize federal reimbursement for child welfare system expenditures;
- Opportunities and financial mechanisms for providers to ***pilot innovative solutions to meet program goals***; and
- Development of a strategy for data collection and outcome monitoring.





# Workgroup Deliverable

**On or before  
December 1, 2023,  
the work group shall  
electronically submit  
the written practice  
and finance model  
framework to the  
Health and Human  
Services Committee  
of the Legislature.**



# LB 1173 Stakeholders

## *Child and Family Well-Being Stakeholders*

Voluntary key stakeholder group integral to the development of the 1173 Child Welfare Practice and Finance model framework. Participants include judges, private child welfare providers, individuals with lived experience in the child welfare system, the Nebraska Children's Commission, the Inspector General of Nebraska Child Welfare, the Foster Care Review Office, child advocacy centers, law enforcement, and county attorneys.



## *LB 1173 Work Group*

Legislatively mandated group required to participate in the development of the Child Welfare Practice and Finance Framework. Members include participation from DHHS, DOE, Court Administrator, state judicial branch, and representatives from each federally recognized Indian tribe, appointed by each tribe's Tribal Council or Executive Committee. Responsibilities include:

- **Submitting monthly reports of progress to the Strategic Leadership group**
- **Deliver the Child Welfare Practice and Finance model framework transformative report by 12/1/2023**



## *Strategic Leadership Group*

Legislatively mandated nonvoting group that exists for purposes of receiving updates on the work group's activities.

Membership:

- Chairperson of the Judiciary Committee of the Legislature;
- Chairperson of the Health and Human Services Committee of the Legislature;
- Chief Justice or the Chief Justice's designee; and
- Chief Executive Officer of the Department of Health and Human Services or such officer's designee.



# Child Welfare Practice Model



# What is a Child Welfare Practice Model?

- Practice models are developed and implemented to guide policy development, practices, clarify expectations, and improve outcomes for children and families.
- A framework that highlights the vision, values, and principles that guides the approach to engaging with children and families.
- Practice models guide the work of those involved with the child welfare system to work together to improve outcomes for children and families.
- Practice models may also include specific approaches and techniques considered fundamental to achieving desired outcomes.
- Practice models may describe organizational principles extending expectations beyond front-line practice to address issues such as agency leadership and relationships with stakeholders and the community.



# Benefits of Developing and Adopting a Practice Model

A well-defined and crafted practice model provides the framework for continuity between the vision and actual practice, by:

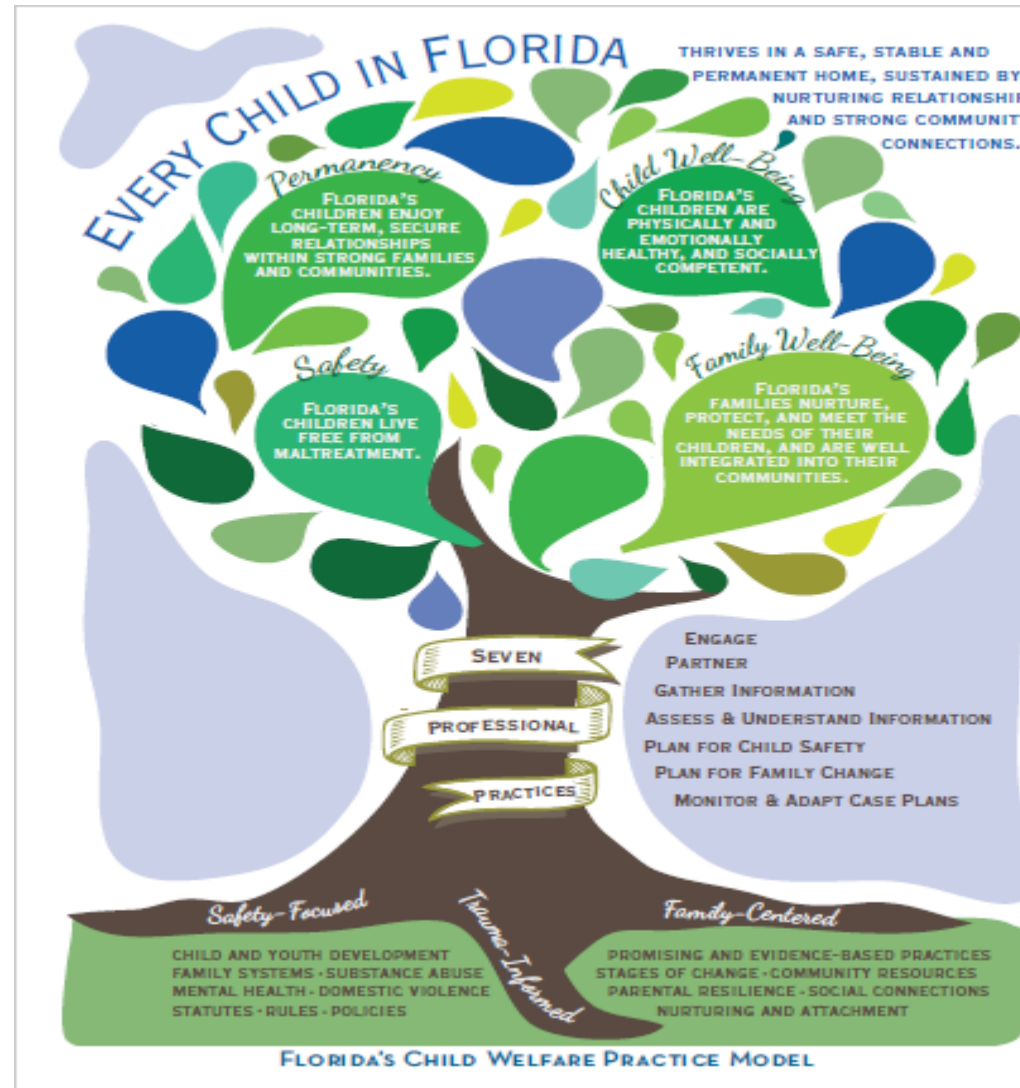
- Creating core values and practice guidelines that will transcend leadership changes
- Policy development and changes with adherence to key principles
- Shaping the construction of training
- Preparing front-line workers with decision making
- Promoting consistency with family engagement
- Transforming agency outcomes

# **Key Principles of Child Welfare Practice Model from Federal Children's Bureau of the Administration for Children and Families, United States Department of Health and Human Services**

- Child-focused
- Family-centered
- Individualized to meet the specific needs of children and families
- Collaborative
- Enhanced to strengthen parental capacity
- Community-based
- Culturally responsive
- Outcome oriented

# Child Welfare Practice Model State Examples

- Florida
- Pennsylvania
- DC





# Workgroup Meeting Calendar and Cadence





# Workgroup Meeting Calendar and Cadence

Date	Activity
13-Mar	Workgroup meeting Topics: Vision/Values/ Practice Priorities/Title IV E Claiming/Finance
6-Apr	Workgroup meeting Topics: Case Management/Families/Community Partners/Prevention (FFPSA)/Finance
2-May	Workgroup meeting Topics: Disproportionality/ Data Collection and Outcome Monitoring/Education/Finance
1-Jun	Workgroup meeting Topics: Courts/Probation/Law Enforcement/Exec Branch/MCO & BH Alignment/Finance
6-Jul	Workgroup meeting Topic: Providers/Accountability/Training/Finance
3-Aug	Workgroup meeting Topics: National Best Practice/Pilot Initiatives/Legislation
7-Sep	Workgroup meeting Topics: Recommendation/Theory of Change/Practice Framework/Training Plan
12-Oct	Workgroup meeting Topics: Framework final report



# What will be happening outside Workgroup meetings

- Interviews
- Focus Groups
- Surveys
- Continuous Stakeholder Engagement Sessions
  - Omaha (Feb.)
  - Columbus (April)
  - Kearney (June)
  - North Platte (August)
  - Lincoln (Sept.)
  - Scottsbluff (October)
- Legislative committee presentation



# Communication

- DHHS Website [Reimagine Well-being](https://dhhs.ne.gov/Pages/LB-1173-Child-and-Family-Well-Being-Working-Group.aspx) (https://dhhs.ne.gov/Pages/LB-1173-Child-and-Family-Well-Being-Working-Group.aspx)
  - Meeting times, locations and topics of interest
  - Ability for stakeholders to offer comments
  - Materials of interest
  - Monthly update reports
  - Survey link
  - Key contact and opportunity for comments
- Public/stakeholder community engagement sessions
- DHHS Provider Newsletter
- Court Improvement Project Newsletter
- Nebraska Foster and Adoptive Parent Newsletter



# Highlights of LB 1173

## Kickoff/Report/Discussion



# Kickoff Key Themes

- Integration and collaboration across agencies and community
- Enhance prevention services at community level
- Eliminate statutory barriers
- Workforce recruitment, retention and professional development
- Flexible and braided funding
- Greater access to behavioral health services
- Improve case management practices
- Enhance technology
- Define and develop key performance metrics and improve accountability
- Involve voices of lived experience in designing framework
- Improve cultural understanding of Tribal Nations, including family life

***(“State has to be more familiar with Tribal culture in order to build strong relationships”)***



# Finance Framework and Approach



# Vision/Mission/Practice Priorities and Goals



# Workgroup Open Forum





# Public Comment



# Upcoming Meeting/Wrap Up