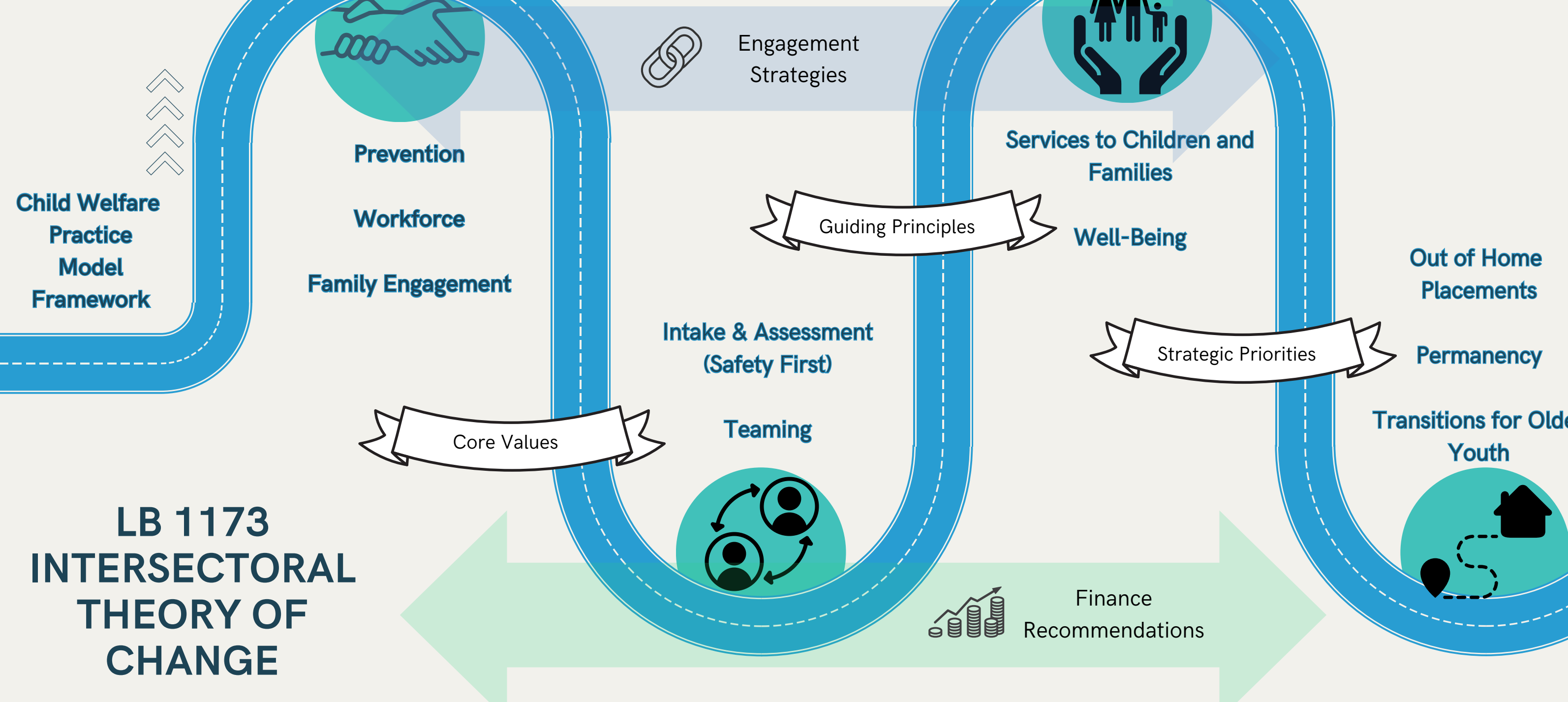
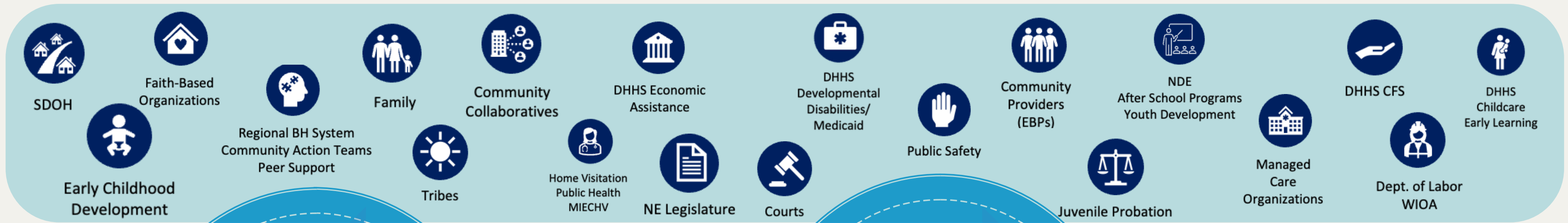


# Nebraska Intersectoral Stakeholders

We believe that the lives of children & families can be enhanced by building strong partnerships for child & family well-being transformation that invests resources in effective & innovative ways



## RE-IMAGINED WELL-BEING

1. Safety
2. Community prevention
3. Reduced maltreatment & recidivism
4. Reduced family separation
5. Child & family well-being
6. Accessibility
7. Improved system experience
8. Community representation

## LB 1173 INTERSECTORAL THEORY OF CHANGE

## Mission

Engaging communities to support families so they thrive, & children are safe.

## Vision

Every child in Nebraska has what they need to thrive in a safe, stable, & permanent home, sustained by nurturing relationships & strong family & community connections.

We will strengthen families in their communities by safely reducing the need for intervention & system involvement by aligning resources more effectively.

## Measures of Success

- Rate of Children Entering Foster Care
- Average Length of Stay for Children in Foster Care
- Percentage of Children and Youth in Care Greater than 24 months
- Percentage of Children Adopted after Termination of Parental Rights
- # of Children Served by Community Response Pathway
- Percentage of Expenditures tied to Source of Funds (Federal, State, Foundation, Private)
- Access to/Utilization of Behavioral Health and Substance Abuse Services
- Racial Equity Service Indicators