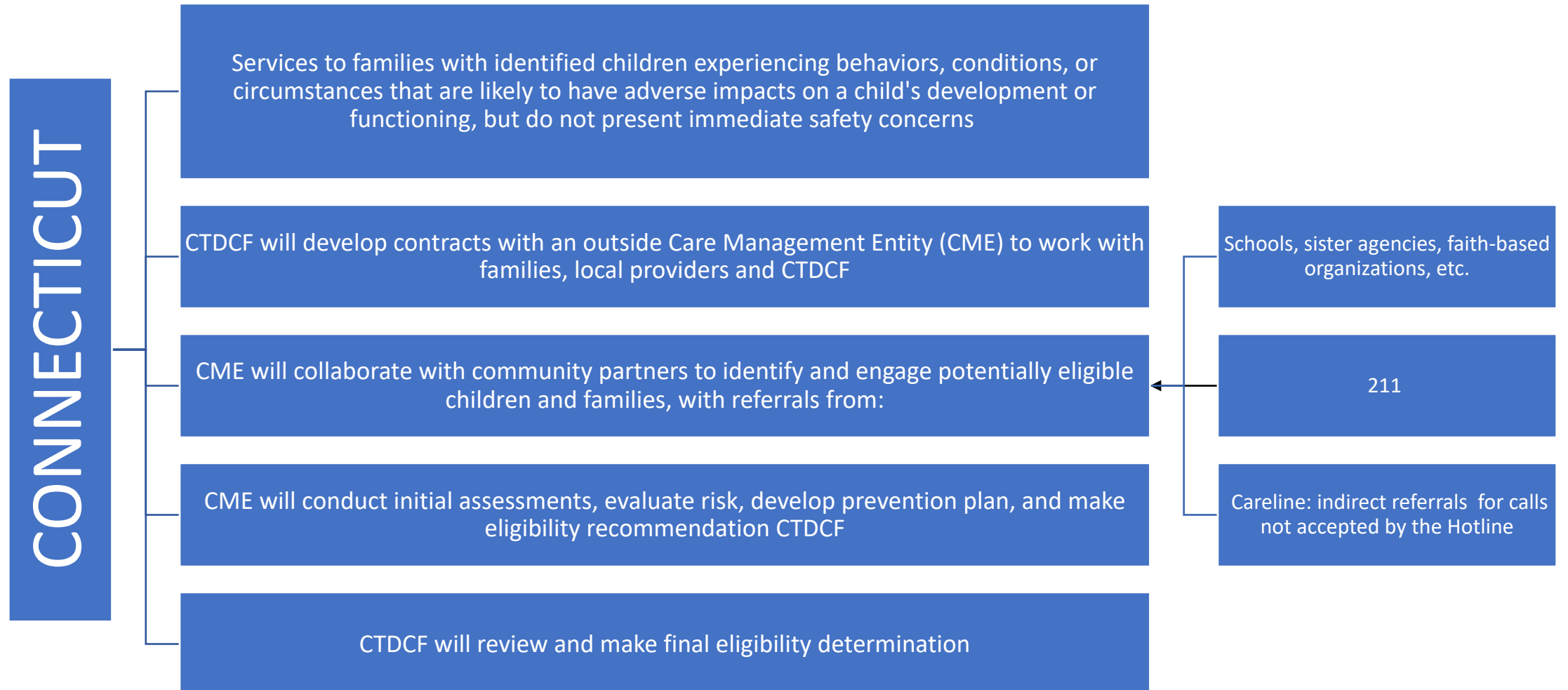
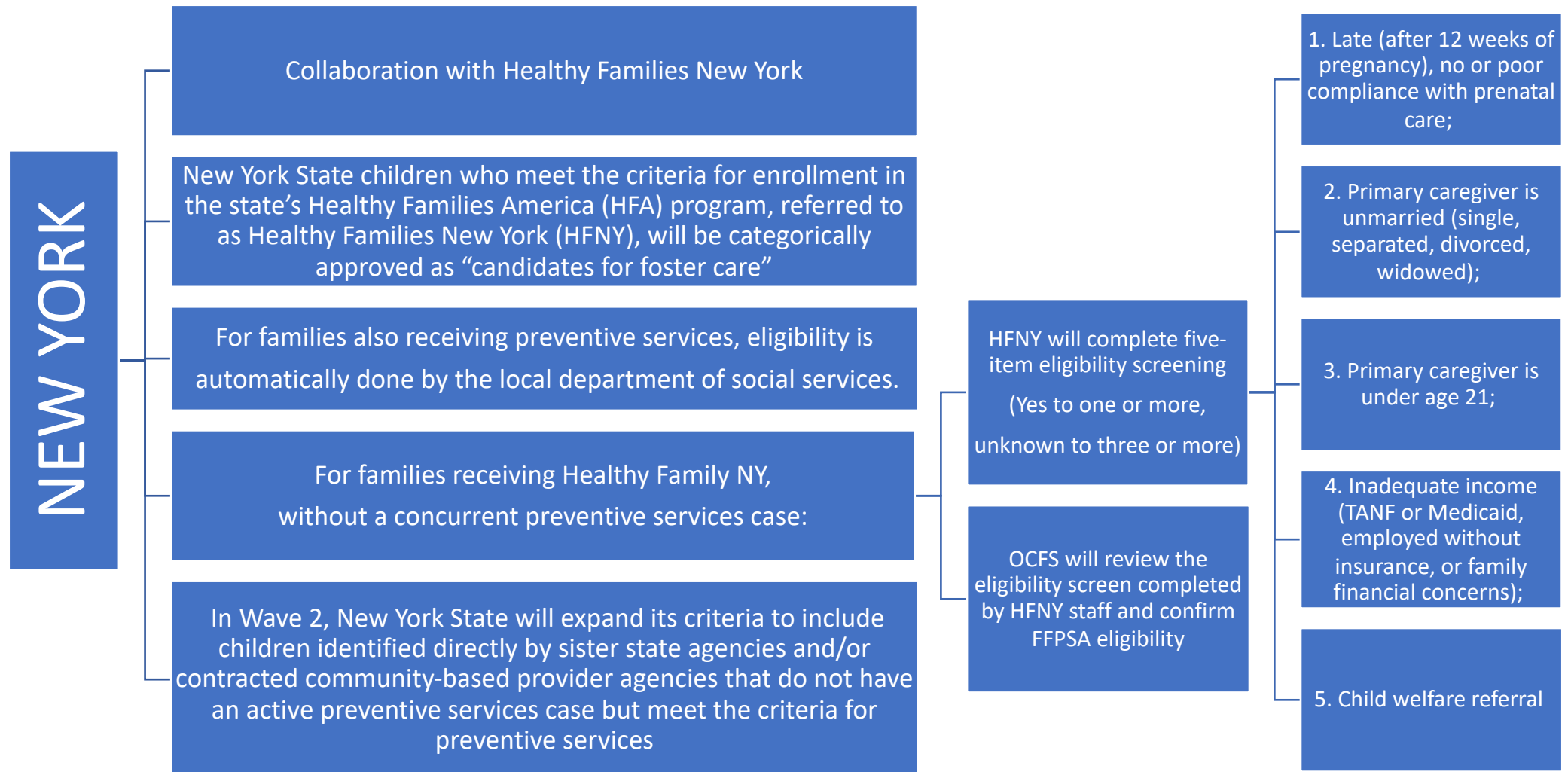


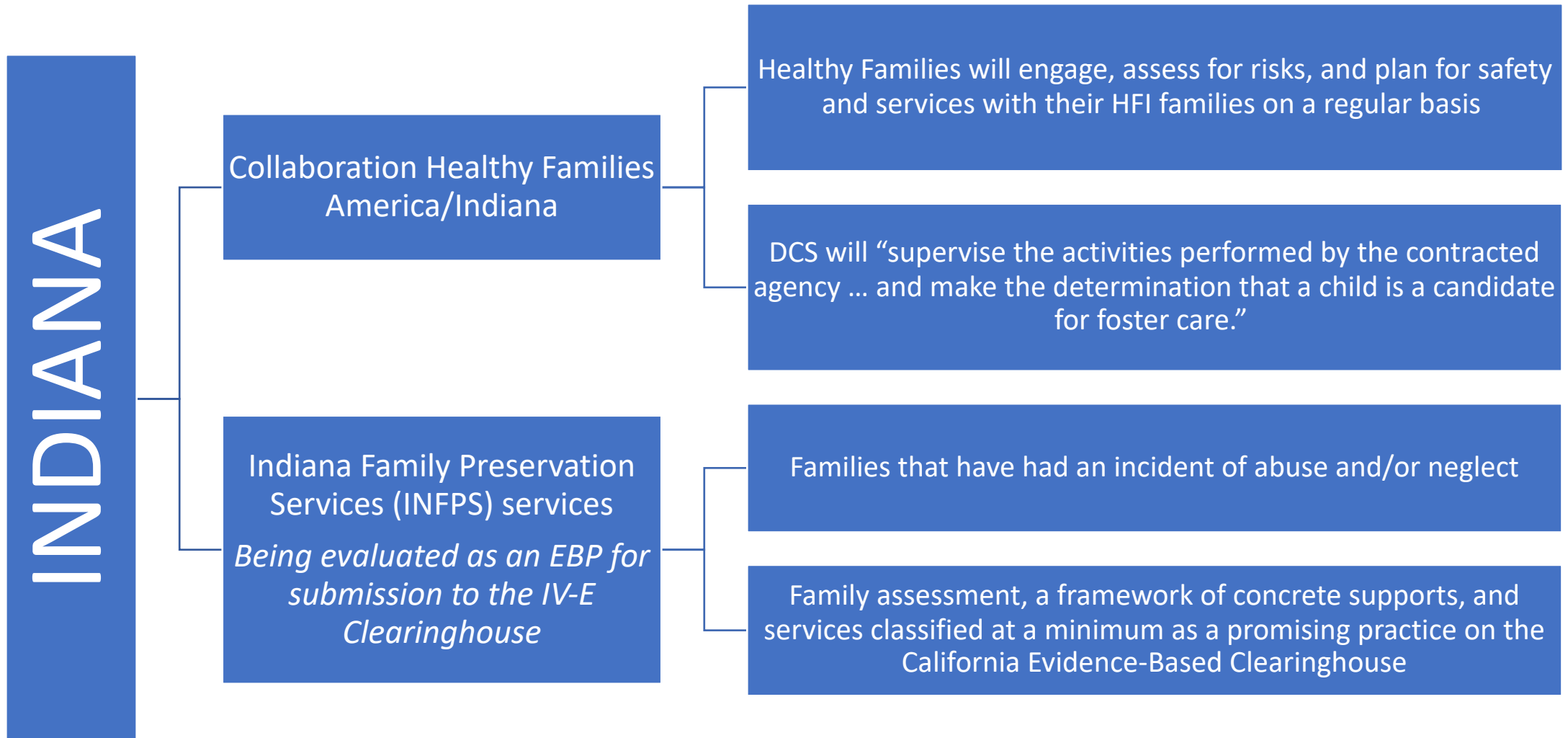
Community Pathways and Innovations



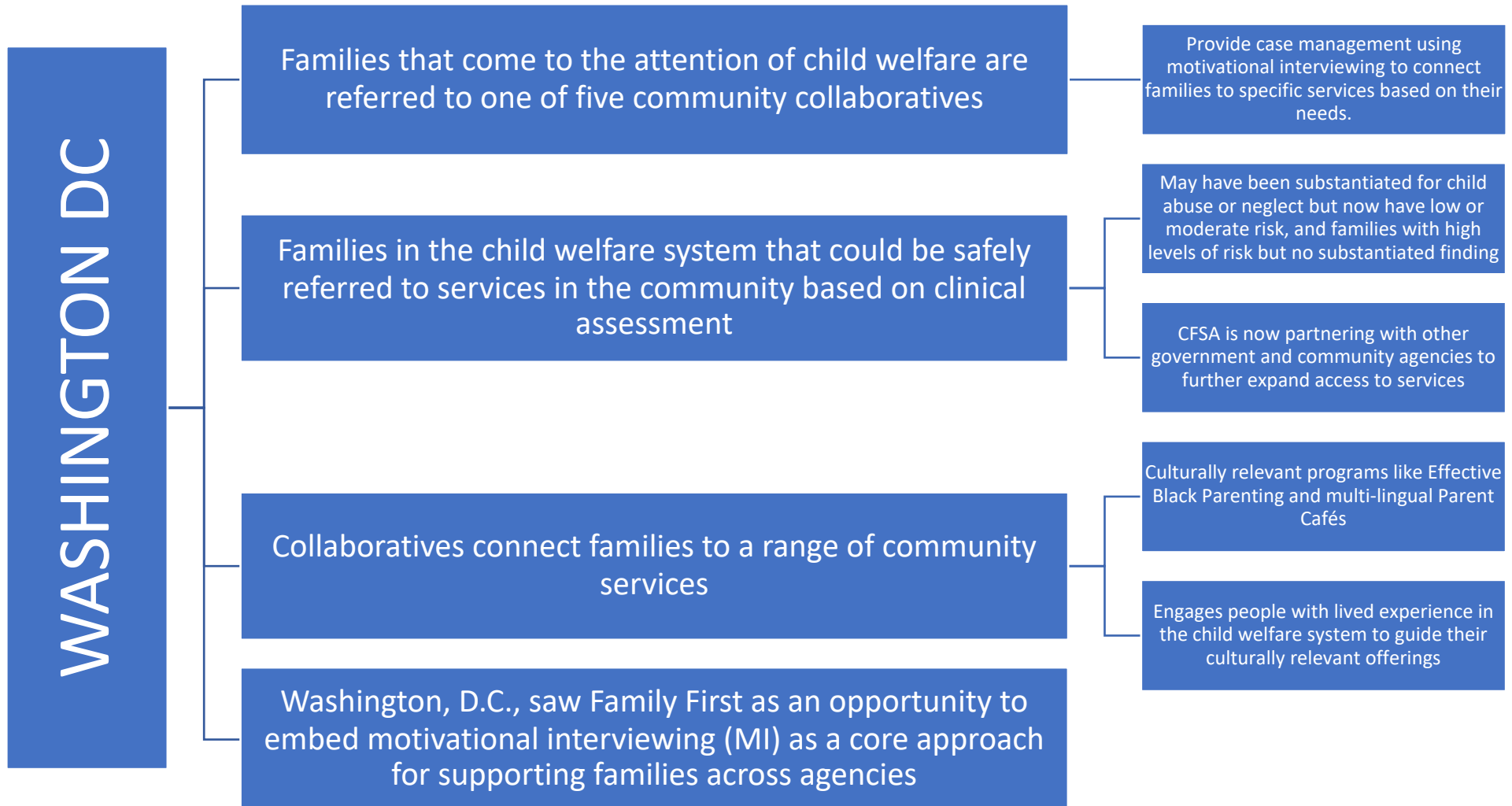
Community Pathways and Innovations



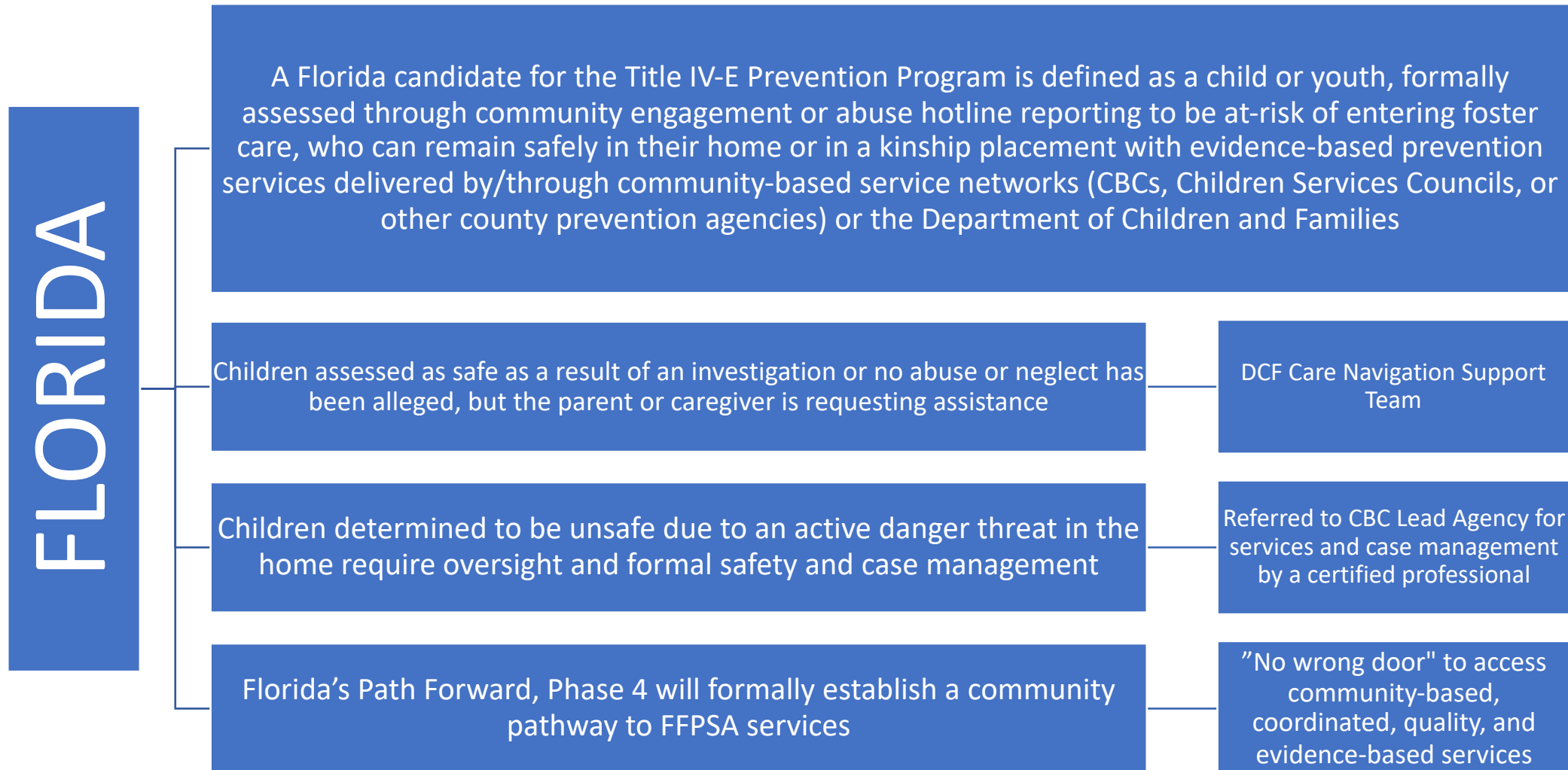
Community Pathways and Innovations



Community Pathways and Innovations



Community Pathways and Innovations





Hospital/Community
calls in a report

Nebraska CFS Substance Exposed Infant Reports 2020 to 2022

Substance Exposed Infants Screened by Hotline	2020	2021	2022
Screened In	245 (87.8%)	221 (91.3%)	156 (86.2%)
Screened Out	34 (12.2%)	21 (8.7%)	25 (13.8%)
Total	279	242	181