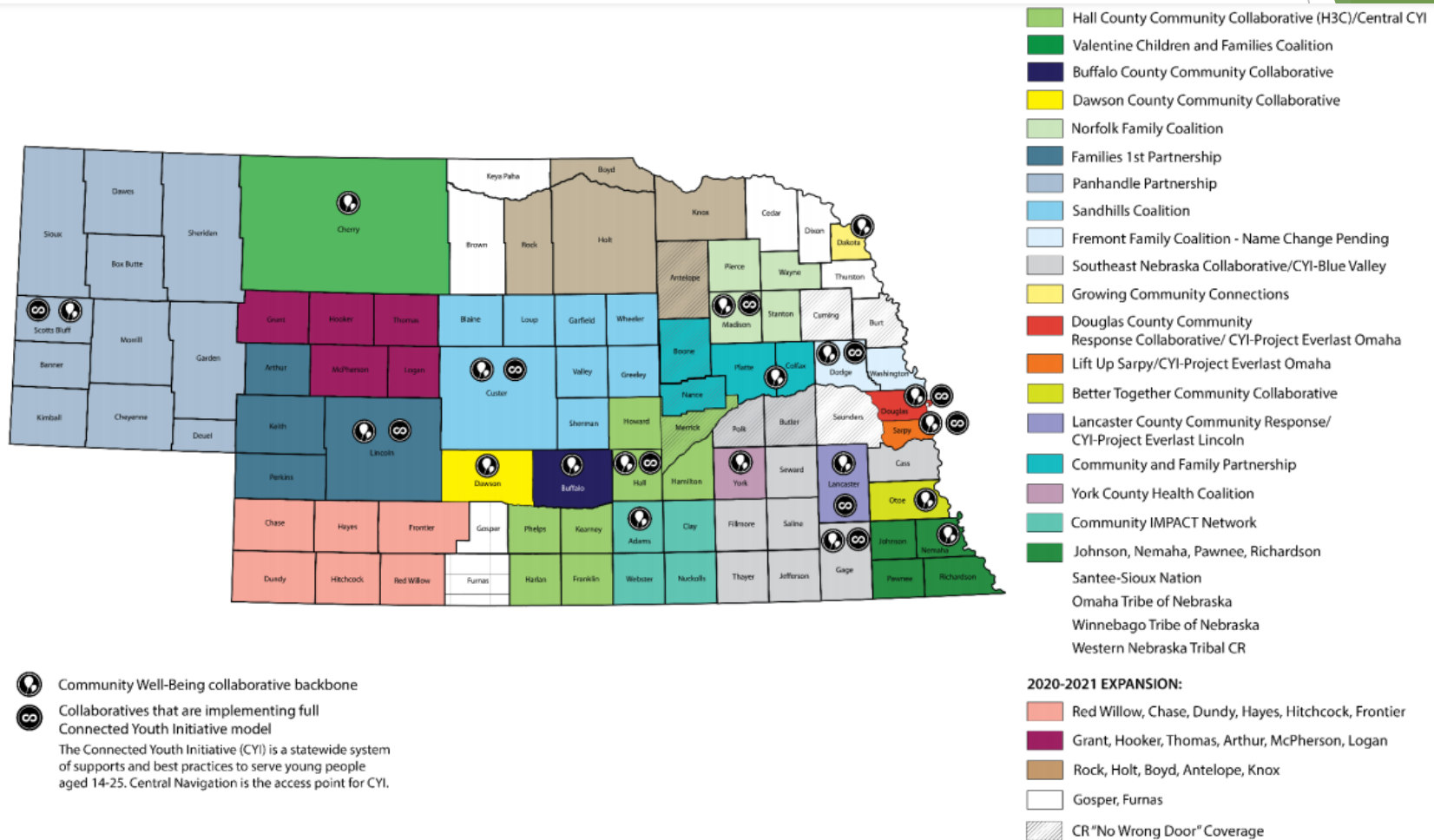


# Community Well Being Collabortives

LB 1173 Meeting

April 5, 2023

# BRING UP NEBRASKA COMMUNITIES



<https://www.nebraskachildren.org/what-we-do/community-prevention-systems/community-contacts.html>

# Community Well Being Collaborative Definition

► The infrastructure, leadership and environment for a **community-based prevention system** that promotes safe, healthy, and thriving children, youth, families, and communities. Key Components:

- **multi-sector**
- Promotive and Protective Factors/Youth and Families Thrive Framework
- **community ownership** and **community-driven**
- A supported collaborative **infrastructure** for collective impact
- A **Lifespan** and whole family focus
- Address historical and root causes for a conducive environment for wellbeing.



nebraskachildren  
AND FAMILIES FOUNDATION



Cultivating the good life for all of our children.

# Community Well-Being Collaborative



Collaborative Members – Families, Schools, DHHS, Public Health, Courts, Hospitals, Behavioral Health, Probation, Churches, ESU, Nonprofits, Businesses

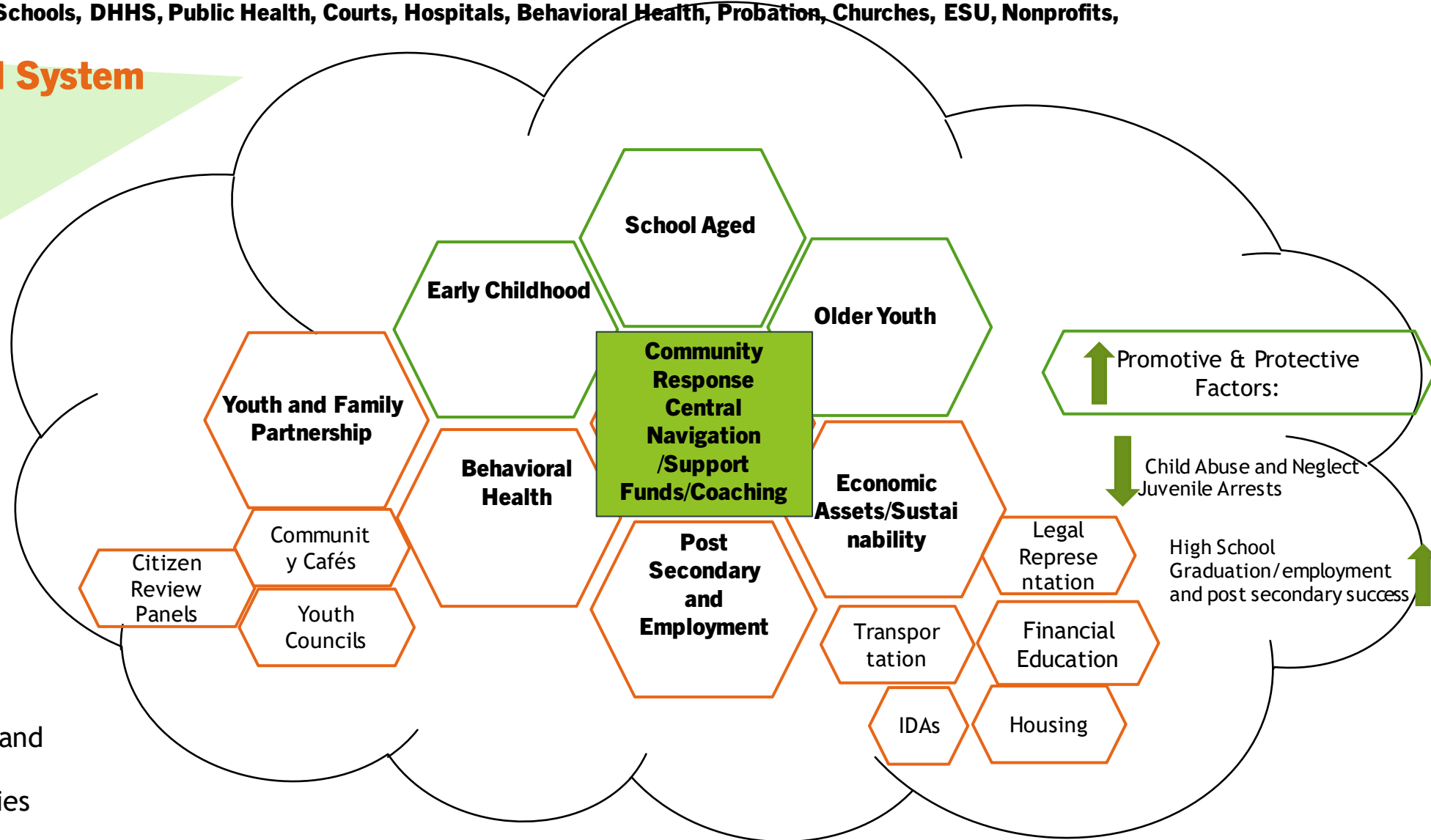
## Backbone Support and System

Policy  
 Research and Evaluation  
 Training/EBPs  
 Marketing and Communications:  
 Grant Management  
 Fund Development  
 Fiscal accountability  
 Family and Youth Partnership - Lived Experience

## Core Principles:

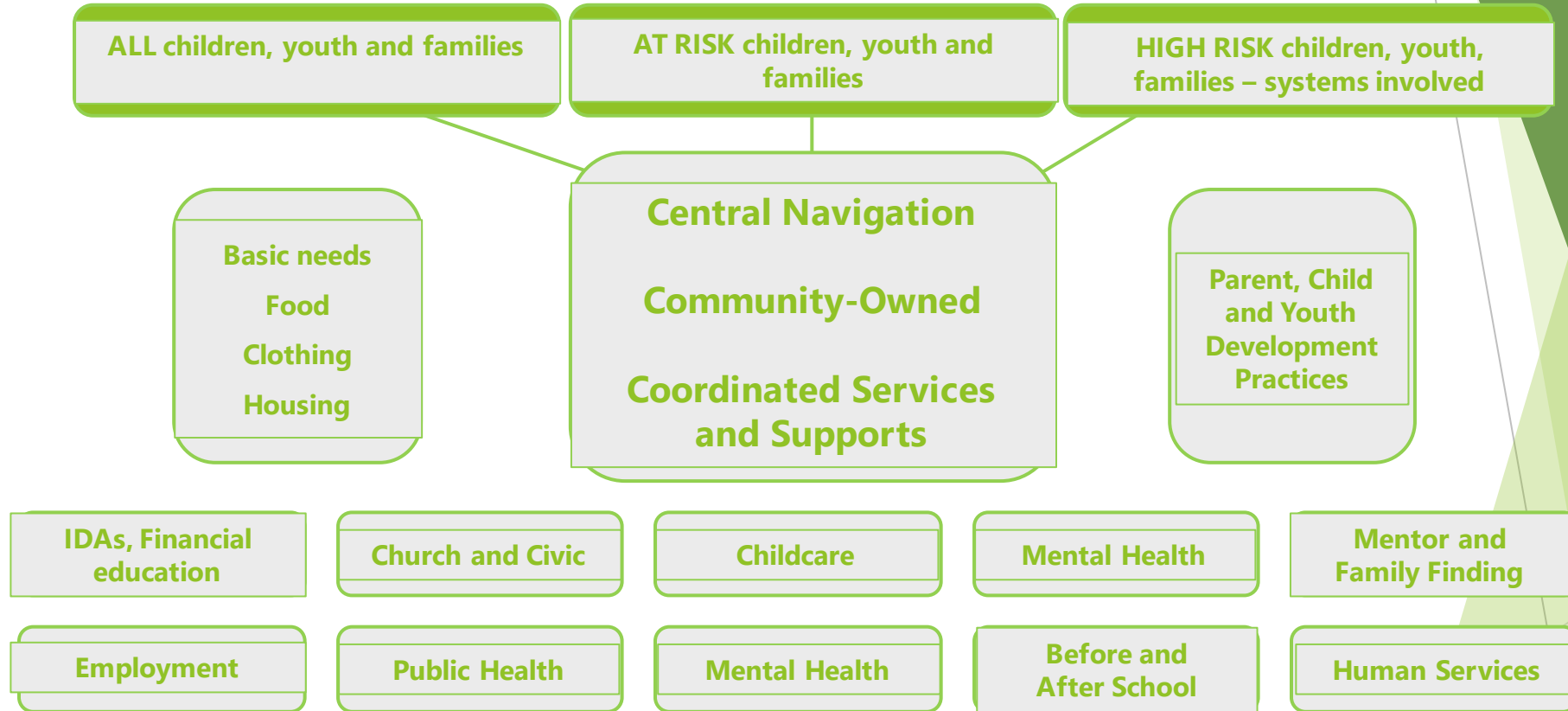
Collective Impact, Race Equity and Inclusion, Primary Prevention, Protective/Promotive Factors, Whole Family, Community Ownership, Lived Experience/Youth and Family Partnerships

 LifeSpan Initiatives and programs  
 Cross Cutting Priorities



\* Adapted from *Listening to the Stars: The Constellation Model of Collaborative Social Change*, by Tonya Surman and Mark Surman, 2008.

# COMMUNITY RESPONSE SYSTEM



*Designed to be the coordination and intersection point where children, youth, families, and CR partners work together.*

## YOUTH AND FAMILIES THRIVE Nebraska

<b>The Strengthening Families™</b> <b>Protective Factors</b> <i>Youth as parents are the focus</i>	<b>The Youth Thrive™</b> <b>Protective and Promotive Factors</b> <i>Youth are the focus</i>
<i><b>Knowledge of Parenting and Child Development</b></i>	<i><b>Knowledge of Adolescent Development</b></i>
<i>The ability to support nurturing attachments and have realistic expectations in order to effectively promote development in children and youth</i>	
<i><b>Social-Emotional Competence in Children</b></i>	<i><b>Cognitive and Social-Emotional Competence in Youth</b></i>
<i>The ability to recognize and regulate emotions and behavior and communicate clearly in order to establish and maintain healthy relationships with family, peers and others</i>	
<i><b>Parental Resilience</b></i>	<i><b>Youth Resilience</b></i>
<i>The ability to recover from difficult life experiences and often to be strengthened and even transformed by those experiences</i>	
<i><b>Social Connections</b></i>	<i><b>Social Connections</b></i>
<i>The ability and opportunity to develop positive relationships that lessen stress and isolation and become a supportive network</i>	
<i><b>Concrete Supports</b></i>	<i><b>Concrete Supports</b></i>
<i>The ability to access resources and services that help make children, youth and families stronger and more resourceful for themselves and others</i>	
<i>Taken together, these factors increase the probability of positive, adaptive and healthy outcome across the developmental continuum, even in the face of risk and adversity.</i>	

# Components of Community Response:

- Coordination of Services (Central Navigation) with Collaborative Partners
- Direct Services (Coaching)
- Engagement and Leadership (youth and family driven service delivery, partnership, and leadership opportunities)
- Support Services Funds



## SUPPORT SERVICE FUNDS

Flexible and supportive funding (called Support Service Funds) is available through Central Navigation when needed. These funds are intended to “fill gaps” when other funding sources are not available or the participant doesn’t meet the criteria for other publicly available programs or resources.

### SUPPORT SERVICE FUNDS DISTRIBUTED IN 2021-2022

Priority Area	Number of Requests	All Dollars	Percent of Total	Average Dollars per Request
Daily Living	263	\$41,278.03	2.0%	\$156.95
Education	26	\$7,726.12	<1%	\$297.16
Employment	5	\$161.50	<1%	\$32.30
Housing	1,365	\$1,087,584.03	51.8%	\$796.76
Mental Health	185	\$54,257.35	2.6%	\$293.28
Other	374	\$140,682.73	6.7%	\$376.16
Parenting	80	\$37,248.63	1.8%	\$465.61
Physical/Dental Health	46	\$15,772.10	<1%	\$342.87
Transportation	667	\$229,143.14	10.9%	\$343.54
Utilities	1,384	\$486,472.02	23.2%	\$351.50
<b>2021-2022 Total</b>	<b>4,395</b>	<b>\$2,100,325.65</b>	<b>--</b>	<b>\$477.89</b>
<i>2020-2021 Total</i>	<i>5,006</i>	<i>\$2,585,460.72**</i>	<i>--</i>	<i>\$413.44</i>
<i>2019-2020 Total</i>	<i>2,079</i>	<i>\$702,333</i>	<i>--</i>	<i>\$338</i>

*\*\*This amount includes federal CARES Act funding that was distributed to communities in 2020-2021. Caution is required when comparing these funds to prior years.*



# Strategies/Pathways address specific priorities of the local community:

- Equitable Access to Basic Needs Services and Supports
- Early Childhood Social-Emotional Development and Quality Early Education
- Substance Abuse and Behavioral Health Challenges
- System involved Young Adults
- Young Adults Who are Pregnant and/or Parenting
- Housing Challenges
- And on and on....



nebraskachildren  
AND FAMILIES FOUNDATION



Cultivating the good life for all of our children.



**Fremont Family Coalition**  
*Strong Families. Strong Community.*

- ▶ Established in 2013
- ▶ Serves Dodge and Washington Counties, as well as surrounding communities
- ▶ Utilizes Collective Impact approach
- ▶ Community Involvement
  - ▶ Through the Eyes of the Child Committee
  - ▶ Transportation Task Force
  - ▶ Food-Security task force
  - ▶ AR Workforce Stability
  - ▶ Balance of State Continuum of Care
  - ▶ Inclusive Communities
  - ▶ Bridges out of Poverty

### Five Conditions for Collective Impact



# Early Childhood Lifespan Workgroup

- ▶ Coordinating the Rooted in Relationships initiative to support the social-emotional well being of children birth through age 8.
  - ▶ Initiative that pairs a local provider with a coach to implement strategies that improve the social-emotional well being of the children in their care.
  - ▶ Pyramid Model Implementation.
- ▶ Communities 4 Kids+
  - ▶ Early Learning Scholarships
  - ▶ Bilingual provider support
  - ▶ Building quality and capacity for childcare providers
- ▶ Dolly Parton Imagination Library
  - ▶ Providing free books to children ages 0-5 in the community
  - ▶ Increasing early childhood literacy
- ▶ Community Diaper Bank
  - ▶ Donated diapers are provided to families in need
  - ▶ 1 out of 3 families struggle to diaper their child



# Youth & Young Adult Lifespan Workgroup

- ▶ Connected Youth Initiative:
  - ▶ Build the capacity of youth and young adults as leaders.
  - ▶ Engage a broad base of stakeholders to support youth and young adults.
  - ▶ Promote professional development opportunities for all youth care providers.
  - ▶ Develop the capacity of youth and young adults to be successful in school and prepared for adulthood.
  - ▶ Engage youth and young adults in community-based services.
- ▶ Hosts quarterly learning opportunities for young adults and parents in the community
- ▶ *CYI Program Components:*
  - ✓ Central Navigation
  - ✓ Youth leadership and engagement
  - ✓ Financial capability
  - ✓ Support services flexible funding
  - ✓ **Coaching**
    - ✓ Learn and Earn to Achieve Potential (LEAP) – Back on Track framework
    - ✓ Dual generation approach

# Community Response Pathway Focus

- ▶ Full-Service Community School
- ▶ Local DHHS partnership
- ▶ Housing
- ▶ Manufacturers
- ▶ Medical Pathway

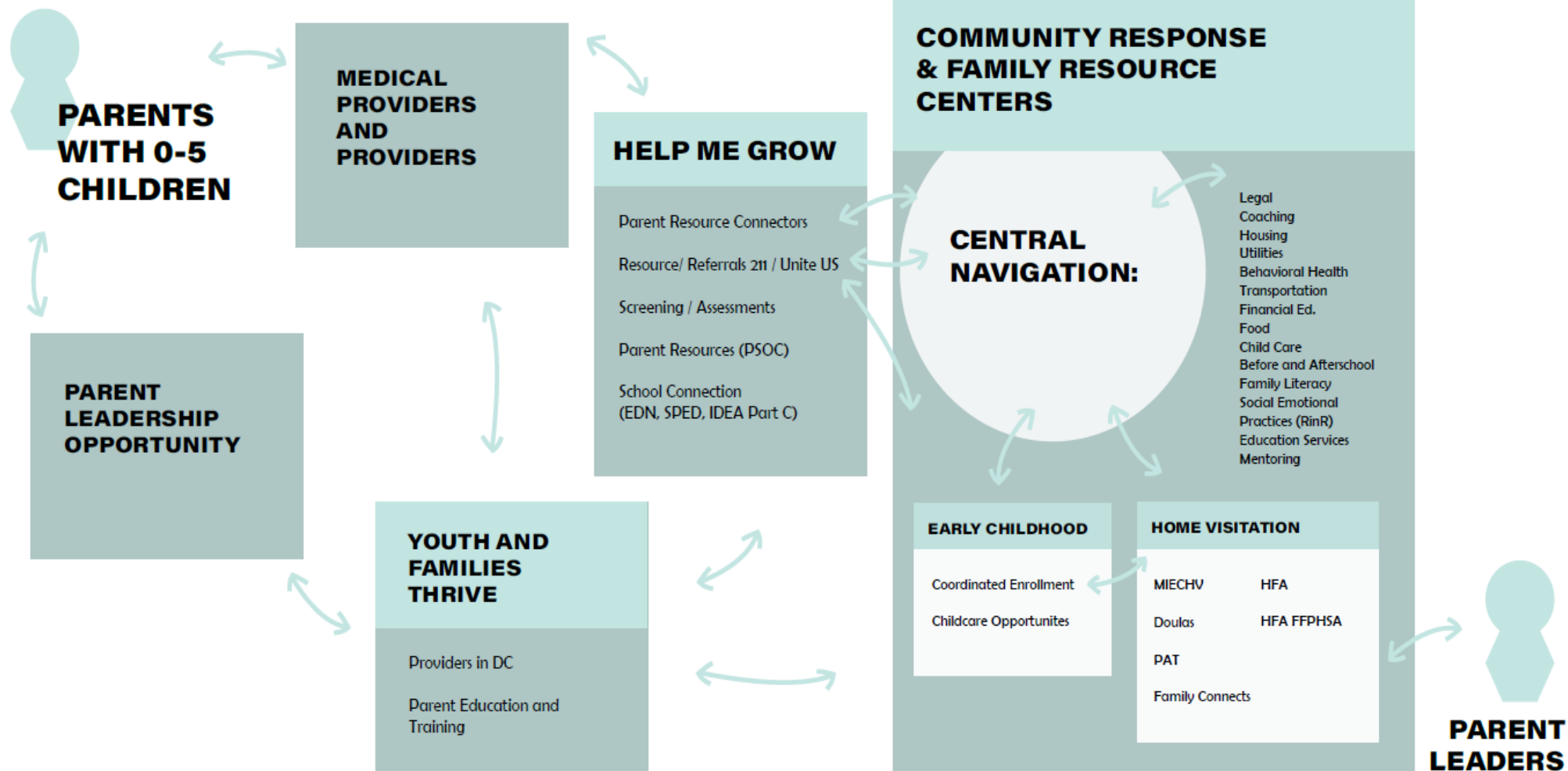
# Bilingual Central Navigator

- ▶ Liaison between Spanish-speaking community members and providers
  - ▶ Spanish GED classes
  - ▶ Multicultural Inclusion Council
  - ▶ Hispanic Festival
- ▶ Appointed to the City of Fremont's Planning Commission
  - ▶ Diversity representation
- ▶ Support bilingual childcare providers
  - ▶ Curriculum and resources
  - ▶ Licensing requirements
- ▶ Immigrant Families Taskforce
  - ▶ Fairness and justice for immigrants and advances a prosperous future for all





# MEDICAL PATHWAY



## STATEWIDE PLAN FOR COMMUNITY WELL BEING

*Nebraska will have the most robust Community Well-Being model in the nation by 2025.*



## Goals- By 2025, we will...

1. Improve authentic collaboration between lived experience partners, system partners, and community collaboratives
2. Increase community collaborative infrastructure that leads to equitable well-being outcomes.
3. Improve services and supports that build Protective and Promotive Factors in children, youth, families, and communities, including:
  - Education, postsecondary education, and career services and supports for children, youth, families, and communities hosted both inside and outside of the traditional school day.
  - Supports and services for youth/young adults and young parents/families.
  - Access to and increased capacity of early childhood services in communities.
  - Access to and increased capacity of physical and behavioral health services in communities.
  - Access to economic stability and concrete supports for children, youth, families, and communities.
4. Strengthen the well-being workforce in Nebraska.



Thank you!