

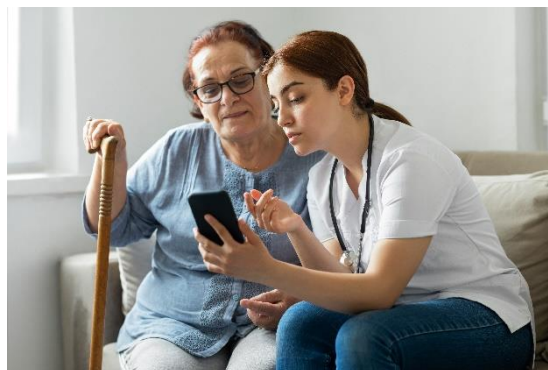


iServe Nebraska Integrated Benefit Application has Launched!

The Nebraska Department of Health and Human Services (DHHS) has launched the iServe Nebraska Portal’s new integrated benefit application that will allow Nebraskans to apply for Medicaid and Economic Assistance benefits and programs. This shift to a single, online application will help save time, as Nebraskans will only need to enter their personal information once, even when applying for multiple programs.

The new iServe Nebraska Integrated Application will:

- Be available on the go using your cell phone, tablet, or computer.
- Display fewer questions when applying for multiple benefit programs.
- Provide a self-service account management feature.
- Securely protect your private information.
- Provide an opportunity to upload your supporting documents.



In preparation for the integrated benefit application, DHHS previously launched the iServe Nebraska Portal homepage and the Explore Benefits tool, added a self-service account management feature, completed a range of testing, and included a survey for Nebraskans to provide immediate feedback while on the portal.

Please Note: During the first few weeks of the Integrated Application launch, Nebraskans may be redirected to ACCESSNebraska when they attempt to apply for benefits via the new iServe Nebraska Portal. We are limiting the number of applications submitted each day to allow DHHS to monitor how well the Portal performs and ensure Nebraskans are getting a high-quality experience.

Want more information?

Check out the [iServe Nebraska Portal Training and Resources page](#) for information, resources, and FAQs.