

Family First Prevention and Services Act (FFPSA)

Investing in Prevention and Supporting Families



NEBRASKA

Good Life. Great Mission.

DEPT. OF HEALTH AND HUMAN SERVICES

Helping People Live Better Lives.

What is FFPSA and Why is it Valuable?

Federal legislation that promotes innovation and flexibility via prevention services reimbursement

FFPSA funds support early prevention and evidence-based practices that help keep families together

FFPSA provides case managers with a broader array of support and funding opportunities

NEBRASKA

Good Life. Great Mission.

DEPT. OF HEALTH AND HUMAN SERVICES

Helping People Live Better Lives.

FFPSA Funding and Application

Must meet the FFPSA
candidacy definition

Have an active
prevention plan
documented in
NFOCUS that describes
the services needed

Be engaged with an
EBP to support that
Plan

State must have an
approved FFPSA Plan

NEBRASKA

Good Life. Great Mission.

DEPT. OF HEALTH AND HUMAN SERVICES

Helping People Live Better Lives.

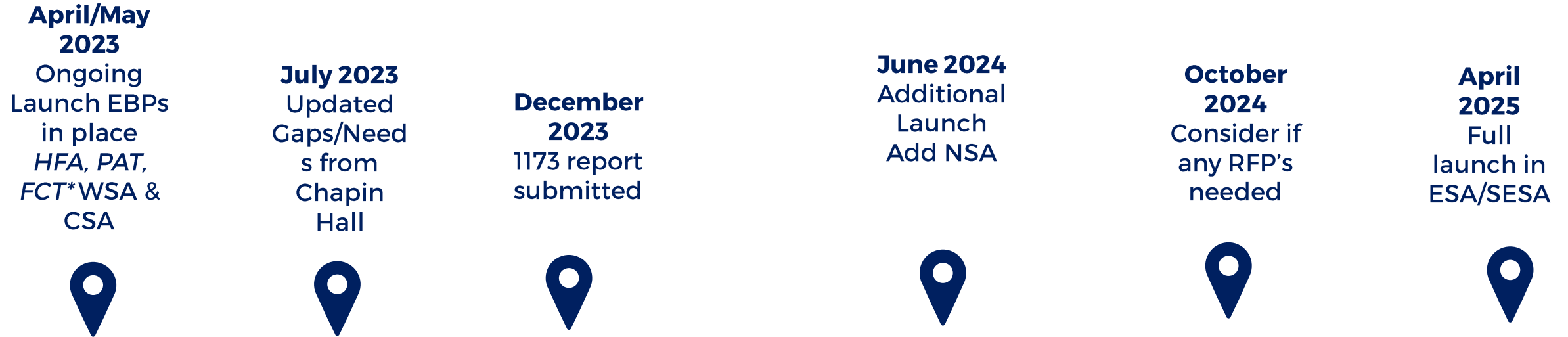
Candidacy Definition

A candidate for foster care is a child who is at imminent risk of entering foster care but can remain safely in his or her home or an Approved Informal Living Arrangement if Prevention Services are in place to prevent the youth from entering foster care. In Nebraska's current FFPSA candidacy definition, this includes:

- A child who is residing in a family home accepted for assessment, with an active, ongoing case, including Court, non-Court, and Alternative Response involved youth
- A child who was previously in out-of-home care but has been reunified with his/her parent/caregiver;
- A child with a 3c case filed in Juvenile Court; this is a child found to be "mentally ill and dangerous" as defined by Nebraska Revised Statute 43-247 (3)(c);
- A pre-natal infant and/or child(ren) of an otherwise eligible pregnant/parenting foster youth in foster care (including placed in Another Planned Permanent Living Arrangement (APPLA) or participating in the Bridge to Independence program);
- A child whose adoption or guardianship is at risk of disruption or dissolution that would result in foster care placement;
- A child with extraordinary needs and whose parents/caretakers are unable to secure assistance for them; and,
- Youth involved with Juvenile Probation and living in the parental/caretaker home.

NEBRASKA
Good Life. Great Mission.
DEPT. OF HEALTH AND HUMAN SERVICES

FFPSA EBP/Area Implementation Timeline



Phase I

Initial Small-scale Launch in WSA/CSA with a select number of EBPs currently in place

Helping People Live Better Lives.

Phase II

Added EBP's, Add Northern Service Area (NSA)
Discuss Community Pathway
* Aligns with Referral Module Implementation

NEBRASKA Phase III

Good Life. Great Mission.
Added EBP's and on-site Implementation
DEPT. OF HEALTH AND HUMAN SERVICES

FFPSA: Evidence Based Programs

Healthy Families America

Parents As Teachers

Family Centered Treatment

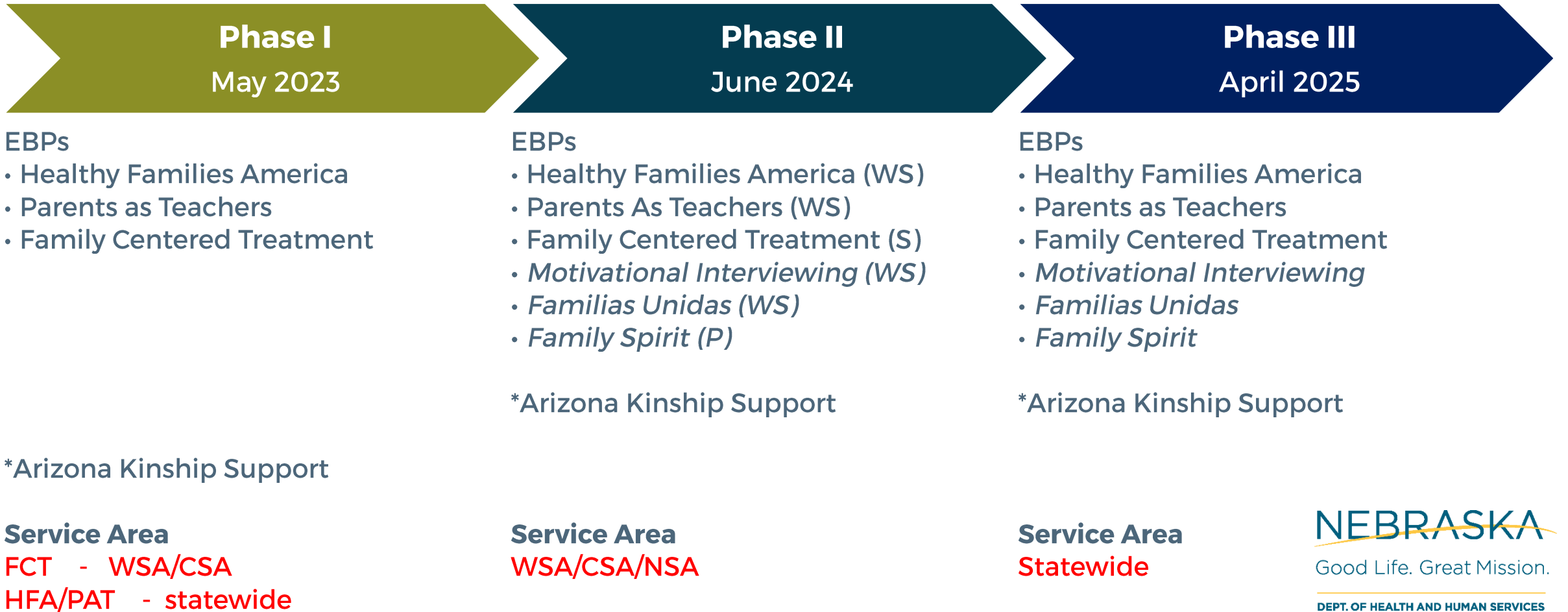
NEBRASKA

Good Life. Great Mission.

DEPT. OF HEALTH AND HUMAN SERVICES

Helping People Live Better Lives.

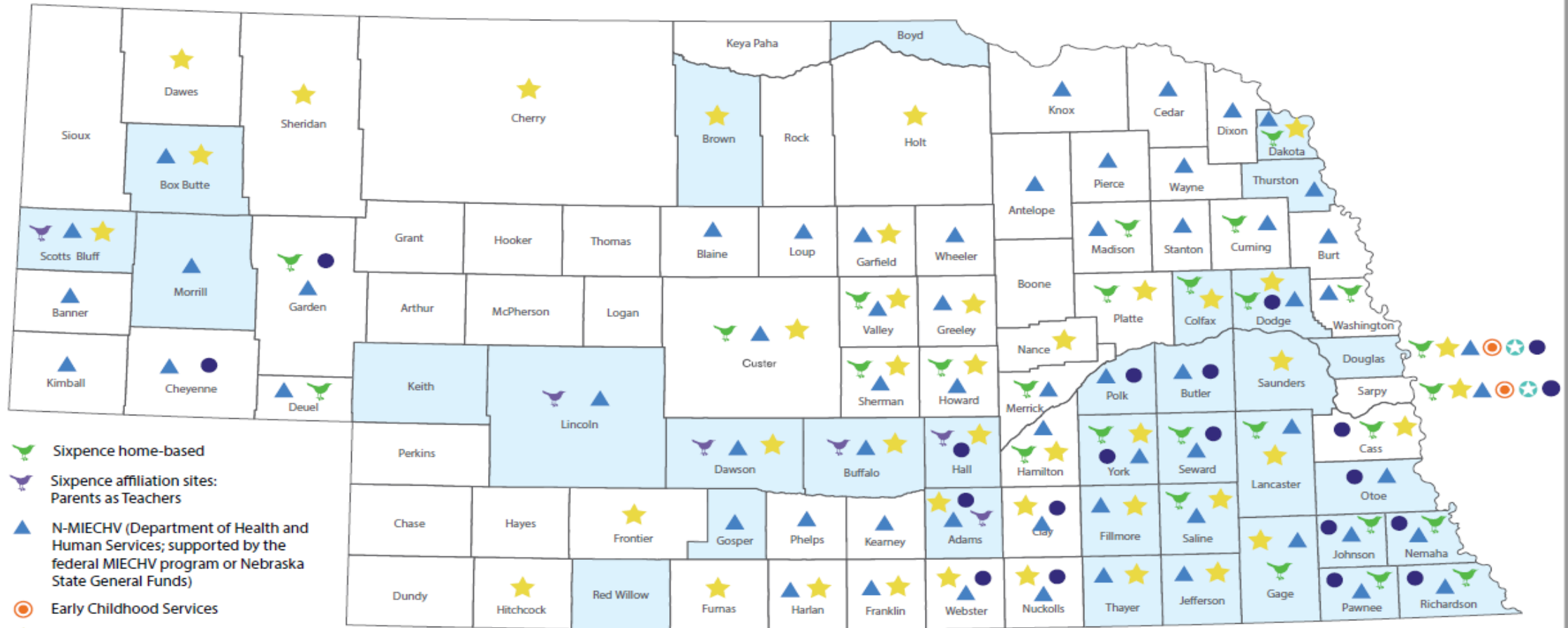
EBP Implementation Timeline



Helping People Live Better Lives.

*Kinship Support is not included in our FEPSA plan but is being implemented with Kinship Navigator funds.

Statewide Home Visiting Initiatives



Updated 9-14-2023

- Nebraska ACA HV Statewide Needs Assessment (HRSA)
31 counties at highest risk for poor outcomes:
 - child welfare
 - education
 - economics
 - juvenile crime
 - behaviors
 - pregnancy outcomes
 - social welfare
 - health outcomes

CFS Prevention Continuum Categories and Examples

Current Nebraska examples

**Prenatal/Early Childhood/
Universal Prevention**

- *Healthy Families America
- *[ChildCare/CCDF/C4K](#)
- *TANF/EA/MLTC
- *Teen and young parents programming
- *Maternal/Child Health programming

- *Sixpence
- *Housing
- *Fatherhood initiatives

Targeted Community Based

- *NC Community Collaboratives
- *Central Navigation
- *Prenatal Plans of Safe Care
- *Family Helpline/211
- *Professional Partner Program
- *Beyond School Bells
- *Mommy and Me programming
- *Child Abuse Prevention Fund Board projects
- *Family Resource Centers/Community-Based Organizations

- *Community Action Partnerships
- *Concrete/Flexible Funding
- *[NonSystem Kinship Navigator](#)
- *[CarePortal](#)
- *Help Me Grow portal
- * Full-Service Community Schools
- *Legal support contract

**Families with CPS system
initial contact**

- *Hotline Screen Out Referrals
- *Alternative Response
- *Anti-trafficking response

- *FFPSA service array
- *Plans of Safe Care

- *In-Home service array
- *MCO coordination

Post CPS case closure

- *Reunification service array
- *Community based referrals
- *Post Guardianship/Adoption supports

- *Connection Youth Initiative
- *Bridge to Independence

Families have what they need when they need it to remain safe, together and thriving in their community.

Integration of FFPSA into Community Prevention

NEBRASKA

Good Life. Great Mission.

DEPT. OF HEALTH AND HUMAN SERVICES

Helping People Live Better Lives.

Operationalizing a Community Pathway

A “community pathway” is **any avenue that families can use to access title IV-E funded prevention services through Family First outside of the traditional child welfare** service delivery & case management context

Who provides service delivery & case management in a community pathway? Options include but are not limited to:

1. Contracted community-based agencies (*e.g., FRC's., community collabs*)
2. Specific evidence-based prevention service providers (*e.g., home visitors*)
3. Non-child welfare public agency partners (*e.g., homelessness, behavioral health, public assistance, etc.*)

NEBRASKA

Good Life. Great Mission.

DEPT. OF HEALTH AND HUMAN SERVICES

Helping People Live Better Lives.

Community Pathways

Paradigm shift to build community capacity and strengthen families upstream and prevent maltreatment

Communities provide support and critical services within FFPSA continuum without formal system involvement

Leverages federal IV-E funding through Family First for prevention services outside of system involvement

HFA prevention pathway example

In all pathways, the IV-E agency, or entity with IV-E agreement, must make the candidacy determination

NEBRASKA

Helping People Live Better Lives.

Broaden FFPSA Candidacy



Use information learned from the initial phase of implementation to drive later phases

Data will be utilized to better understand the needs of families and help inform an amended definition

The Gaps/Needs Analysis will be utilized to better inform children and families that are eligible to receive FFPSA programming.

NEBRASKA

Good Life. Great Mission.

DEPT. OF HEALTH AND HUMAN SERVICES

Helping People Live Better Lives.

Potential Pathways to Access Family First Prevention Services in the Community

Before any child welfare involvement

Indiana

CA

Connecticut

DC

NY

Rhode Island

After a call to the hotline or closed CPS investigation

DC

CA

Connecticut

Indiana

Rhode Island

After a child welfare case is closed

DC

CA

Connecticut

Rhode Island

Warmline

- Single access point resources
- Families can call themselves to ask for assistance
- Any other caller type can call for resources or guidance to support a family
- Intended for calls that do not need the level of intervention through the CPS Hotline/CFS
- Screened-out CFS hotline calls could be referred to the Warmline after screening
- Initial needs screening
- Navigation to connect to the right resource in a closed-loop referral system

NEBRASKA

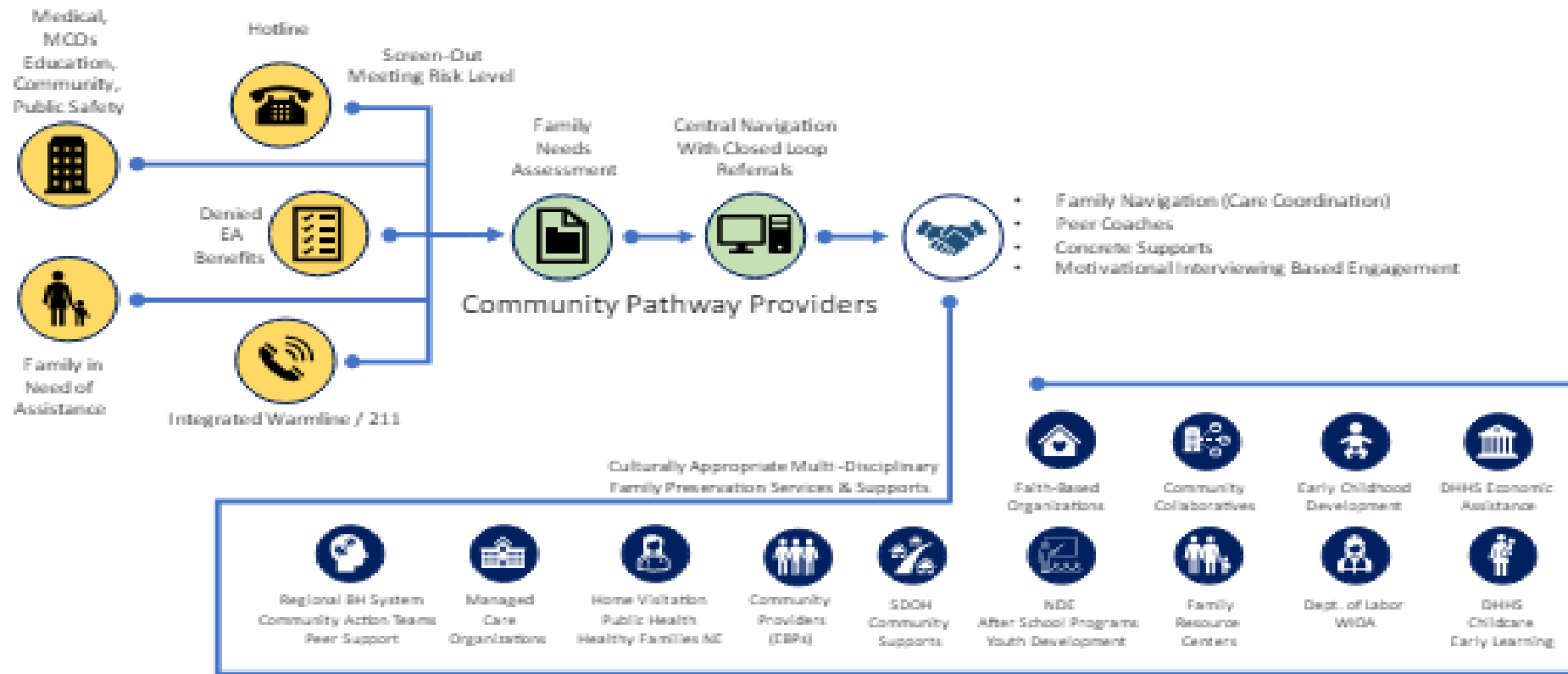
Good Life. Great Mission.

DEPT. OF HEALTH AND HUMAN SERVICES

Helping People Live Better Lives.

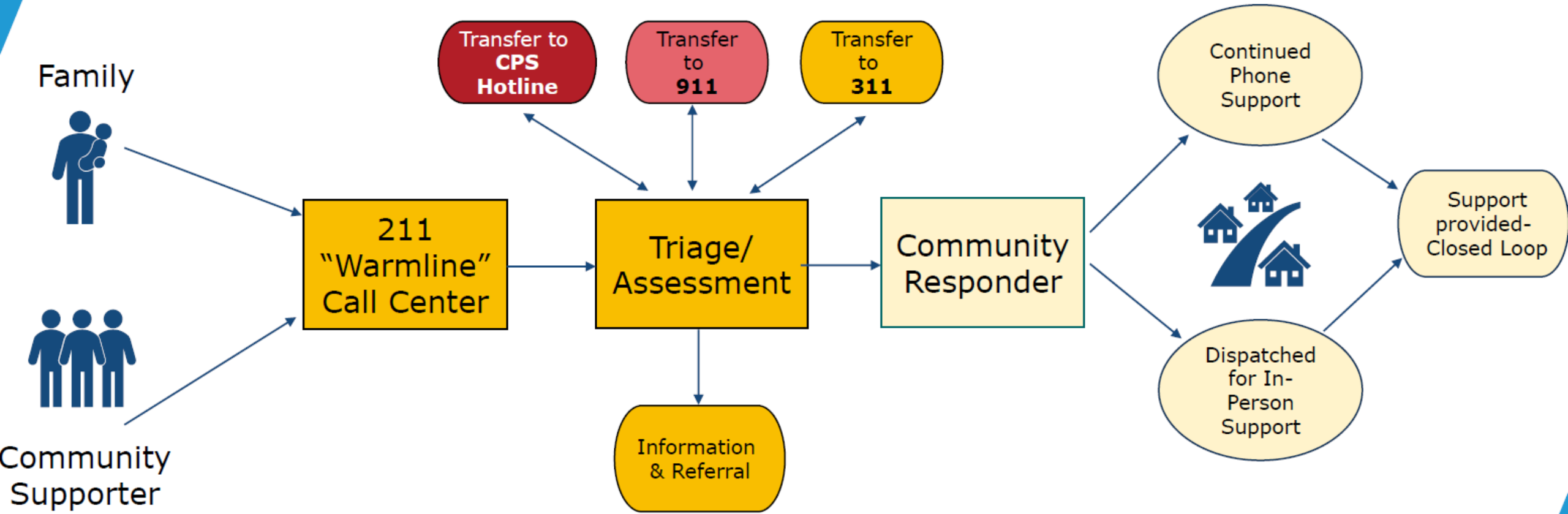
Warmline visual from Reimaging Wellbeing report

Community Response Pathway: LB 1173 Future State Prevention Model



Helping People Live Better Lives.

Warmline & Community Response Model Process



What is needed to proceed?

Submit adjusted
Prevention Plan for
federal approval

Build up
infrastructure to
capture required
fidelity and data
information

Statutory Review

Meet with providers
to discuss bringing
up/building capacity
of EBPs.

Develop and
implement
processes for a
warmline and
community pathway

NEBRASKA

Good Life. Great Mission.

DEPT. OF HEALTH AND HUMAN SERVICES

Helping People Live Better Lives.

For more information:

Jamie Kramer

Jamie.Kramer@nebraska.gov

DHHS.familyfirst@Nebraska.gov

<http://dhhs.ne.gov/Pages/Family-First.aspx>



@NEDHHS



NebraskaDHHS



@NEDHHS

dhhs.ne.gov

NEBRASKA

Good Life. Great Mission.

DEPT. OF HEALTH AND HUMAN SERVICES

Helping People Live Better Lives.