





1

# Nebraska's Implementation of Prenatal Plans of Safe Care & Language Justice



**Mariana Munoz de Schell**  
Assistant VP of Cultural & Linguistic Reponse

**Mikayla Wicks**  
Assistant VP of Medical Pathways

2

# Agenda

- 2016 CAPTA Update (Language Justice)
- Plan of Safe Care (POSC) Development
- Prenatal Plans of Safe Care
- Next Steps



3

# Overview of Legislation

## Comprehensive Addiction and Recovery Act

- Passed July 22, 2016
- Federal Response to the national opioid epidemic.
- Requires
  - Policies and procedures to address the needs of infants born and identified as being:
    - Affected by ~~illegal~~ substance abuse; or
    - Withdrawal symptoms resulting from prenatal drug exposure; or
    - A Fetal Alcohol Spectrum Disorder



4

# Overview of Legislation

## Comprehensive Addiction and Recovery Act

- Requirements Cont'd
  - Healthcare providers involved in the delivery or care of infants notify the child protective services system of the occurrence of the condition of such infants.
  - The development of a Plan of Safe Care for the infant born and identified as being affected by ~~illegal~~ substance abuse or withdrawal symptoms or Alcohol Spectrum Disorder.



5

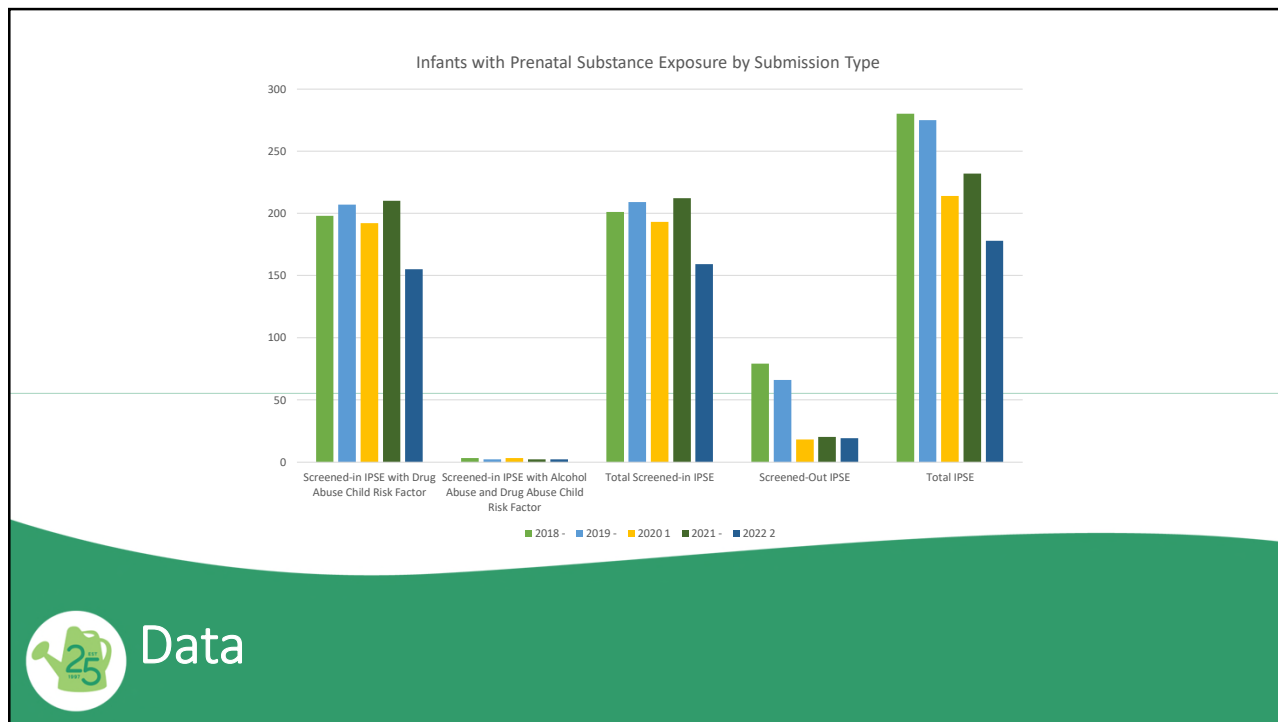
# Overview of Legislation

## Data Requirements

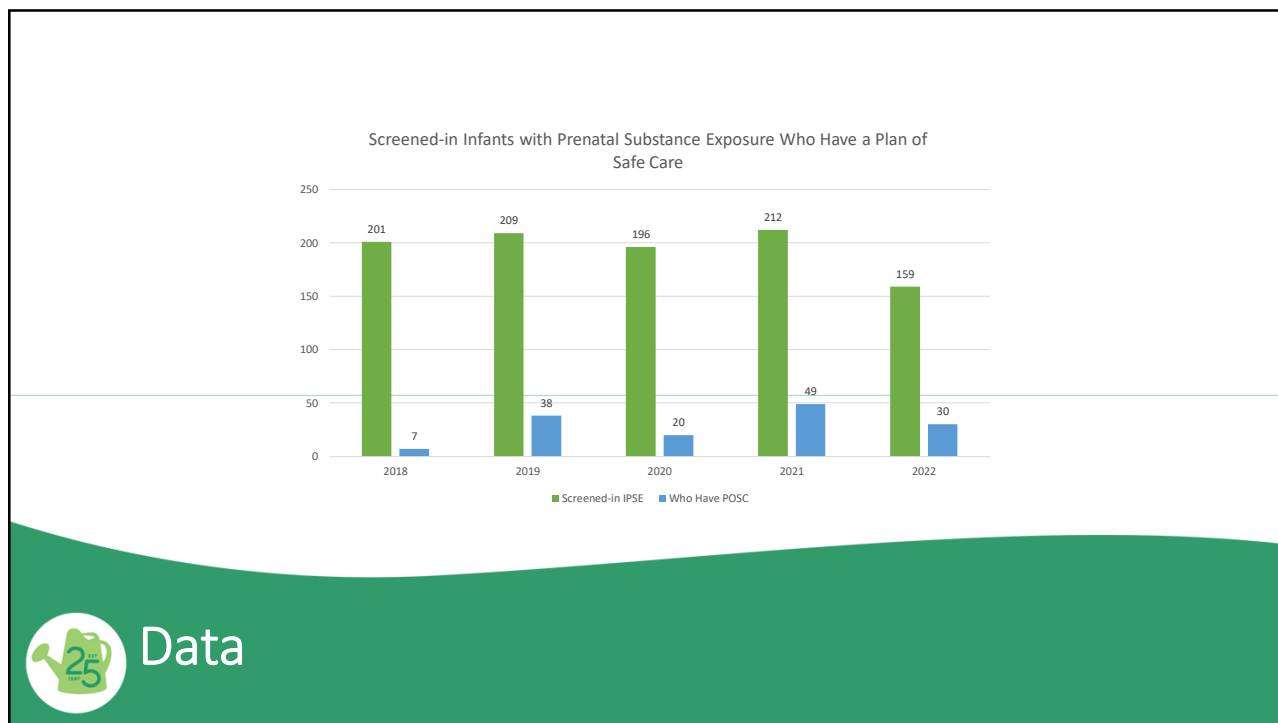
- The number of infants identified as being affected by substance abuse, withdrawal symptoms resulting from prenatal drug exposure or Fetal Alcohol Spectrum Disorder.
- The number of infants for whom a Plan of Safe Care was developed.
- The number of infants for whom referrals were made for appropriate services-including services for the affected family or caregiver.



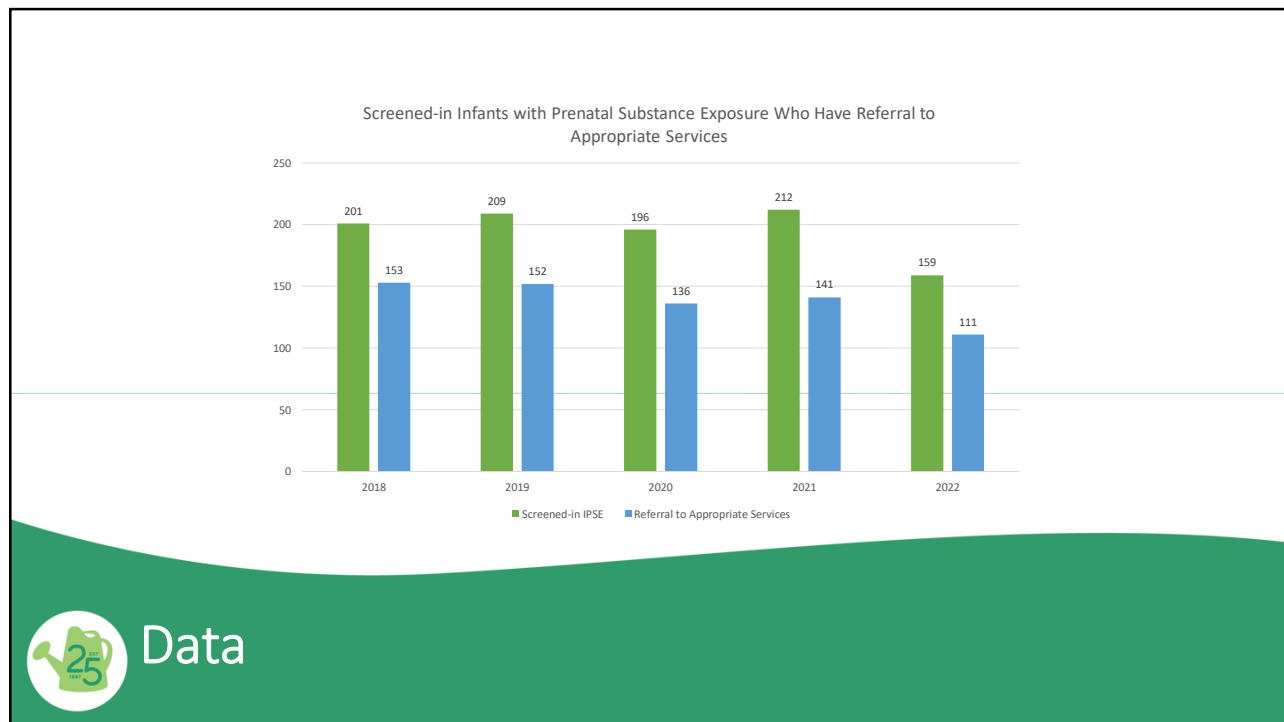
6



7



8




9

## Plan of Safe Care

### Requirements

- Addresses health and substance use treatment needs for the infant and mother/caregiver.
- Focuses on the safety and well-being of the infant and family
- Identifies support for the family: informal and formal
- Addresses family strengths and goals for post-discharge
- Identifies the mother's and other caregivers' strengths and parenting capacities.



10

# Plan of Safe Care

## Nebraska's Implementation

- Coordination across disciplines
  - UNMC, Nebraska Perinatal Quality Improvement Collaborative; MCO's Division of Public Health, Division of Children and Family Services
- <https://dhhs.ne.gov/Pages/Comprehensive-Addiction-and-Recovery-Act.aspx>



11

# Pathways

## Reporting

- If child abuse and/or neglect is suspected, always notify the Nebraska Children Abuse and Neglect Hotline (1-800-652-1999)

## Notification

- If there are no child abuse and/or neglect concerns, complete a Notification Form or Spreadsheet and send to DHHS.



12

# Pathways

## Notification Process

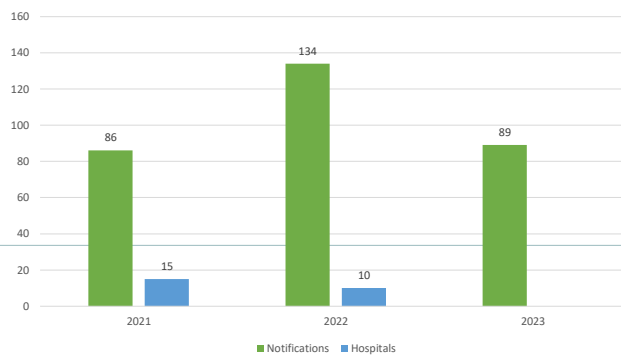
- Notify: This notification does not contain identifying information. The following criteria require a notification to DHHS:
  - Mother is stable and engaged in opioid medication assisted treatment with a licensed physician;
  - Mother is being treated with opioids for chronic pain by a licensed physician;
  - Mother is stable and engaged in treatment for other non-opioid substance use, including alcohol, with a licensed provider, physician and/or stable recovery program;
  - Infant is at risk of Fetal Alcohol Spectrum Disorder; or
  - Mother is engaged in substance use or misuse, (including Marijuana) that does not rise to the level of abuse/neglect requiring a report. This is up to the physician's judgement.



file:///C:/Users/MikaylaWicks/Downloads/Comprehensive%20Addiction%20and%20Recovery%20Act%20(CAR A)%20Notification%20Form%20(5).pdf

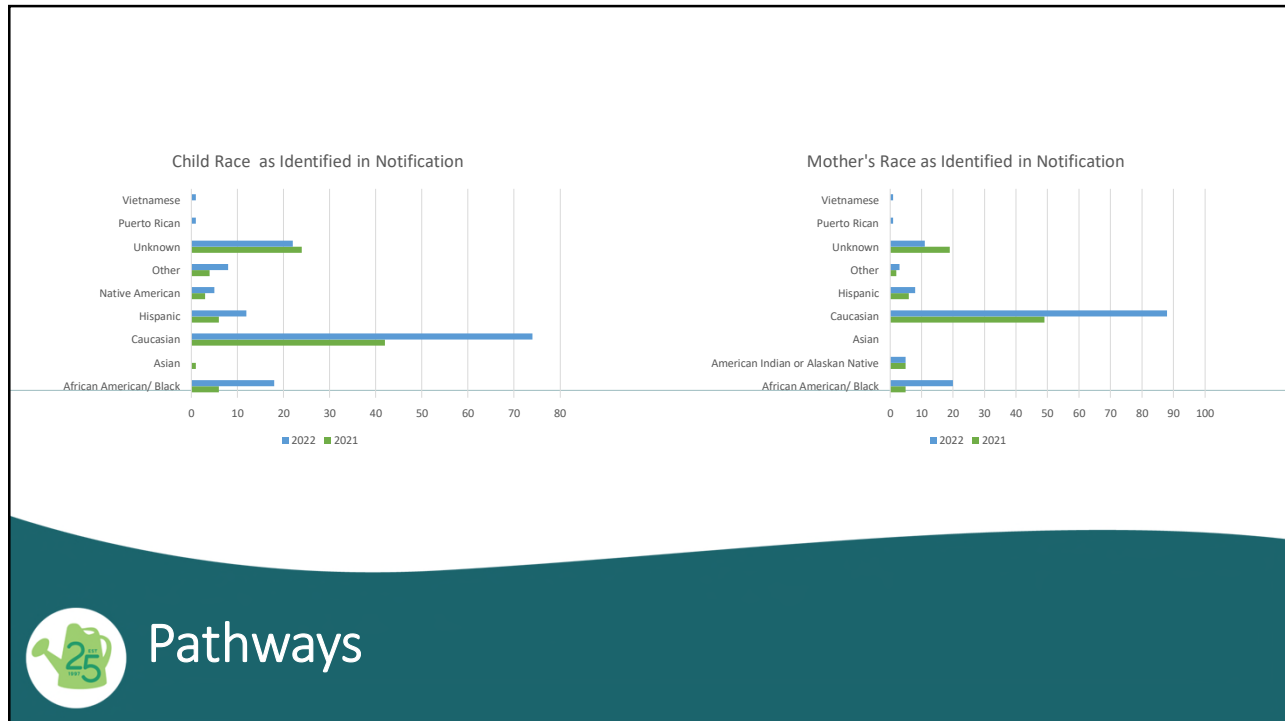
13

Notifications and Hospitals Completing Notifications

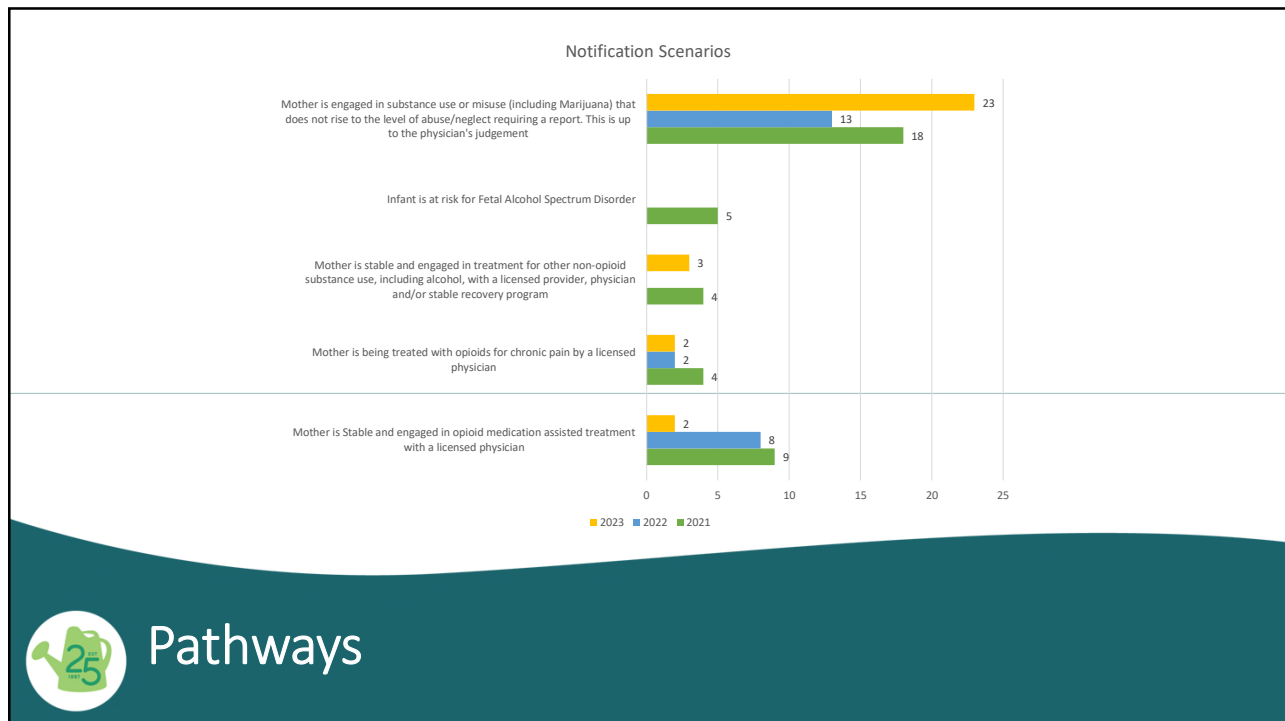


Pathways

14

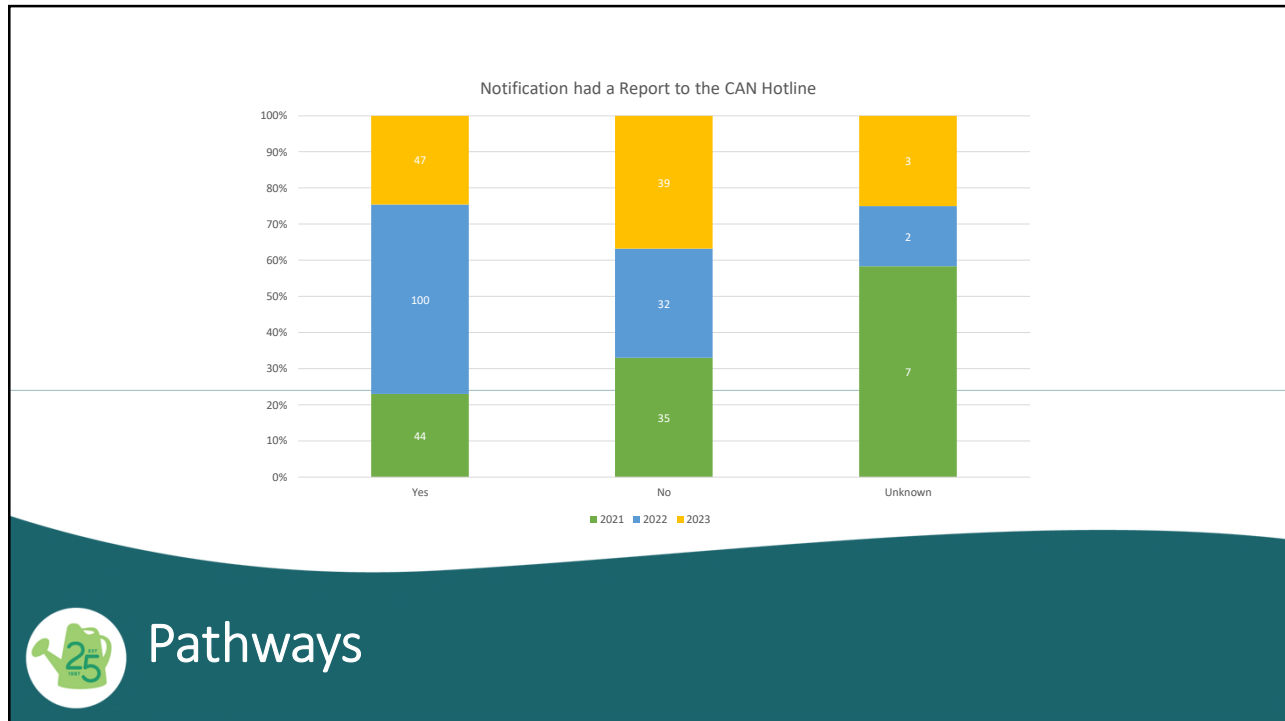


15

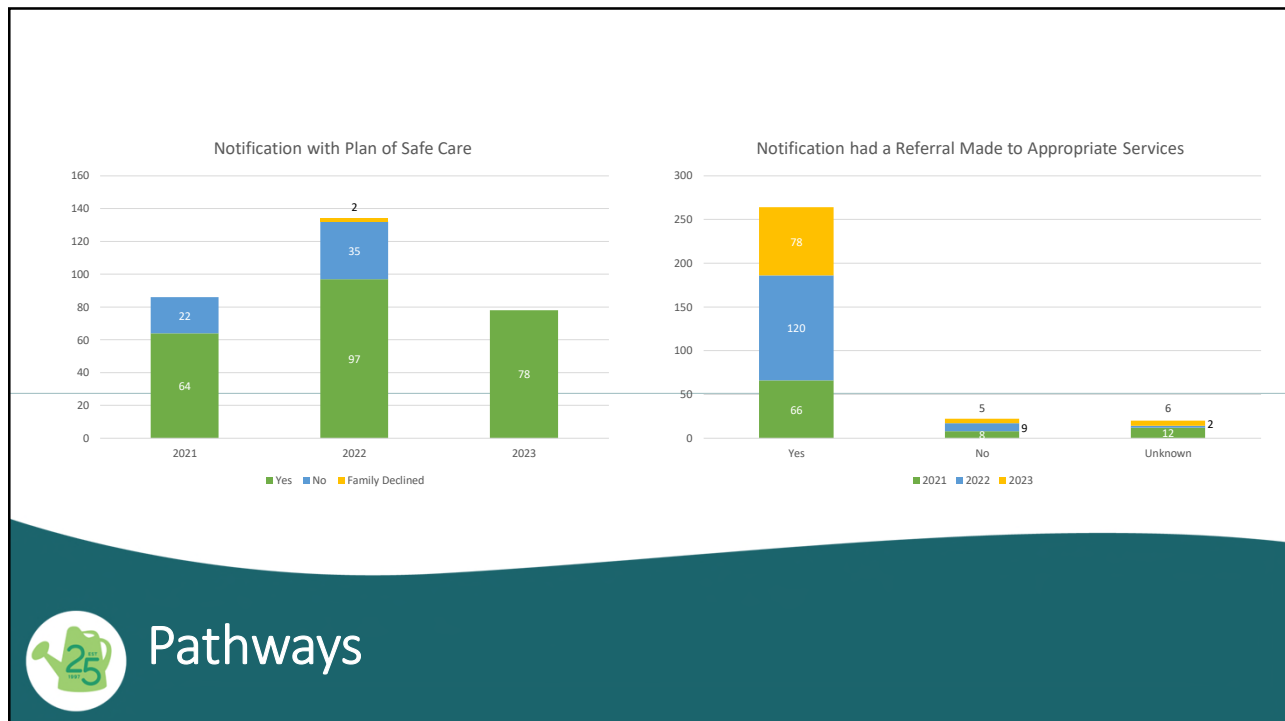


16





17



18

# Prenatal Plan of Safe Care Implementation

## In-Depth Technical Assistance

- National Center on Substance Abuse and Child Welfare (Children and Family Futures)
- Binder Model
- Pilot Site Selection



19

# Prenatal Plan of Safe Care Implementation

- 1. Plan of Safe Care
  - Demographics
  - Medical History
  - Medication List
  - Psychiatric History
  - Substance Use History
  - Medical Services for Substance Use
  - Prenatal Drug Testing Results
- Family & Supports
- Current Support System
- Strengths
- Goals (Parenting, Breastfeeding, Recovery, etc.)
- Where do you see yourself in 3-5 years



20

## Binder Content Cont'd

- Infant Information
- Infant Care Needs
- Infant's Medications
- Referrals and Services
- Relapse Prevention Plan
- Additional Children
  - Demographics
  - Medical History
  - Existing Medical Conditions and Medications
  - Education History and Community Connections
- Introducing Your POSC to a Provider
  - Communications Log
- 2. Contacts
- 3. Consents & Release of Information
- 4. Child Resources
  - Choosing a Pediatrician
- 5. Appointments and Visit Summaries
- 6. Certificate and Accomplishments
- Notes/Update Log



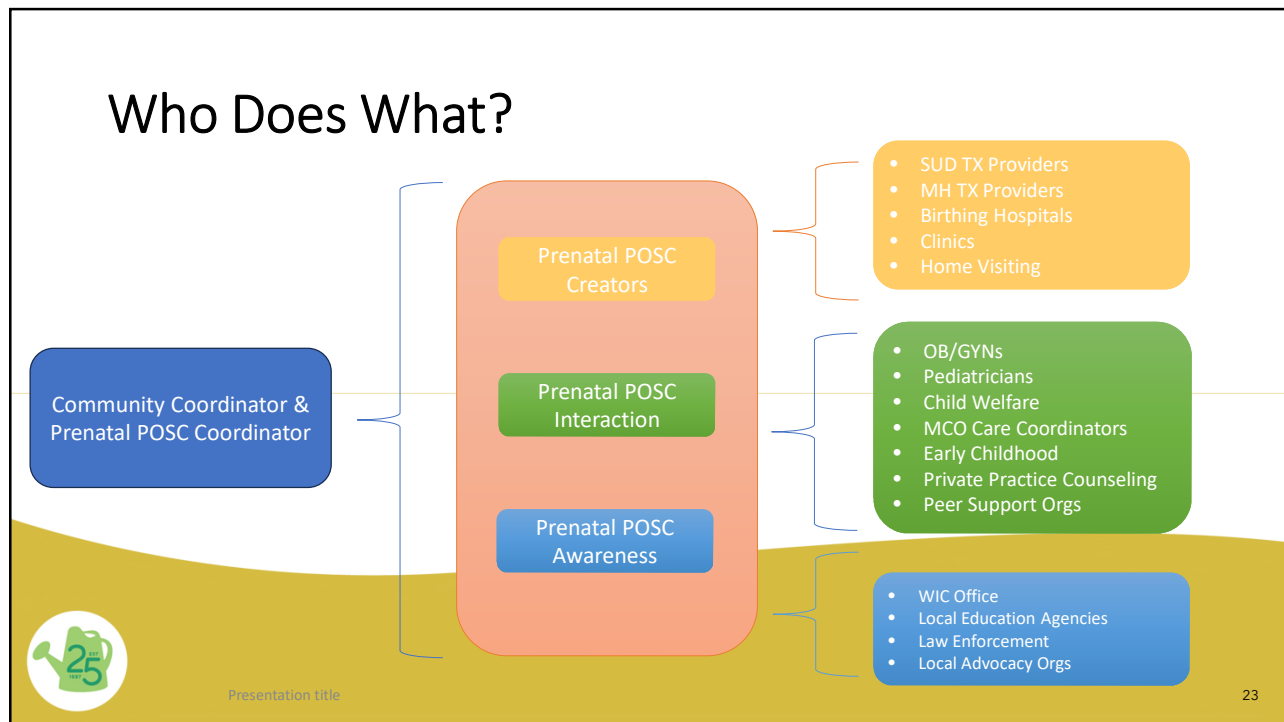
21

## Prenatal Plan of Safe Care Implementation

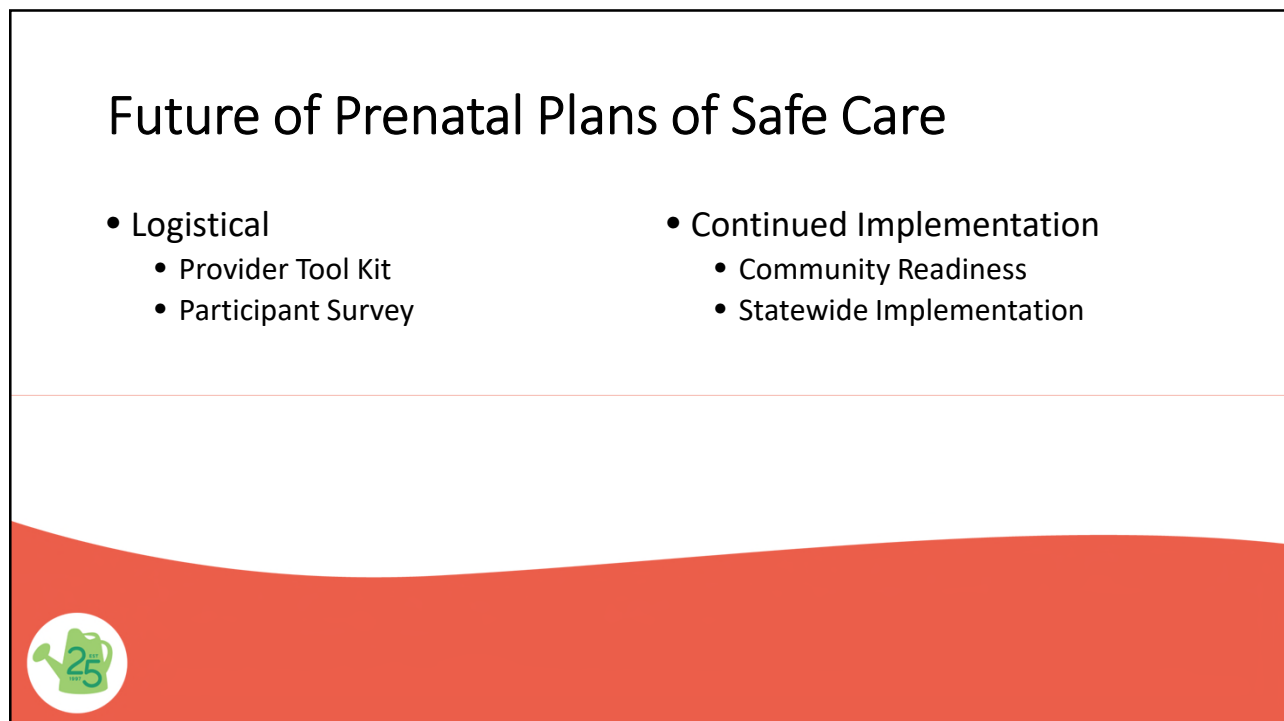
- Implementation Sites
  - Hastings
  - North Platte
  - South Sioux City
- Community Collaborative



22



23



24

*Thank you!*



nebraskachildren  
AND FAMILIES FOUNDATION

[www.NebraskaChildren.org](http://www.NebraskaChildren.org)