

Coronavirus Disease 2019 (COVID-19): Screening and Testing Information

If you are showing signs and symptoms of COVID-19, please call ahead to your healthcare provider to be evaluated and determine if you need to be tested. If you do not have a primary care provider, below is a list of healthcare networks that can help. If you see a doctor at one of the health systems below, call or use the hospital's information line below.

- **Bryan Health**

<https://www.bryanhealth.com> – EZ Visit (*Coronavirus questions will be answered free of charge*)
COVID-19 hotline – 402-481-0500 (Available 24/7)

Drive-thru testing at LifePointe Campus – 7501 S 27th St., Lincoln, NE 68512 (2-6 p.m. seven days a week)

- **CHI Health (Creighton University Medical Center Bergan Mercy, Immanuel Hospital, Lakeside, St. Elizabeth's, St. Francis, Good Samaritan, and others)**

<https://www.chihealth.com> – Virtual Care (Available 24/7)

Free screening service – take the questionnaire
Visit www.chihealth.com/coronavirus

Free Virtual Care
Visit www.chihealth.com/virtualcare or call 1-844-355-2273

- **Methodist Health**

COVID-19 Hotline – 402-815-7425 (SICK) (Available 24/7)

- **Nebraska Medicine, Bellevue Hospital**

COVID-19 Information Hotline and Referral – 1-800-922-0000

- **OneWorld Community Health Center**

<https://www.oneworldomaha.org/oneworld-coronavirus-covid-19-updates>

Un-insured or under-insured individuals seeking medical assessment for COVID-19 should call ahead. See website above for information on locations, hours of operation and contact information.

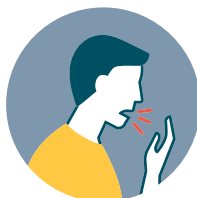
Coronavirus Disease 2019 (COVID-19) is a respiratory disease caused by a new virus strain that can spread from person to person, causing severe illness including pneumonia in some people.

Symptoms can appear 2 to 14 days after exposure to the virus. The most common symptoms reported are:

Fever



Cough



Fatigue



Shortness of breath or difficulty breathing

