

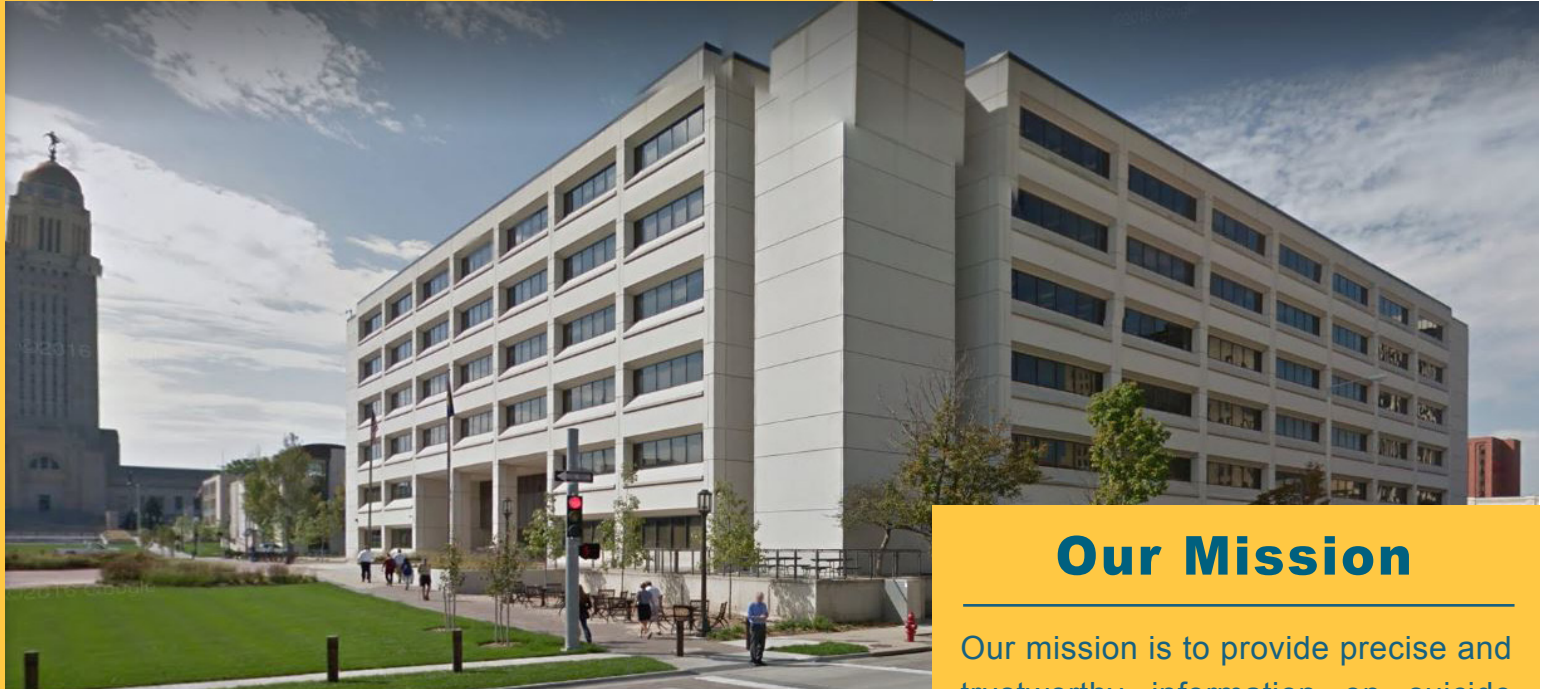
# SUICIDE PREVENTION NEWSLETTER

Quarterly Newsletter

# NEBRASKA

Good Life. Great Mission.

Issue #1  
1<sup>st</sup> Quarter - 2024



## Who We Are

Welcome to the Nebraska Violent Death Reporting System (NEVDRS) newsletter, where we provide vital updates on our program's efforts to address suicide as a significant public health concern in Nebraska. With funding from the CDC and collaboration with partners such as law enforcement and coroners, we diligently compile comprehensive data on violent deaths, including suicide, across all counties in the state. Our aim is to collect over 600 unique data elements for each death, yielding crucial insights that inform prevention and intervention strategies.

Emphasizing the importance of collective efforts in creating a safer and healthier Nebraska, our newsletter calls for support from stakeholders in raising awareness and fostering a culture that values mental health and suicide prevention. Through active engagement in projects and the dissemination of accurate data via our newsletter, NEVDRS strives to make a positive impact on community well-being and contribute to informed public health initiatives. Join us in our mission to prevent suicide and promote mental health awareness in Nebraska.

## Our Mission

Our mission is to provide precise and trustworthy information on suicide data in Nebraska, emphasizing the urgency of addressing this public health concern. Through fostering awareness and collaboration, we aim to contribute to comprehensive suicide prevention strategies. Committed to accuracy, our advanced data analysis identifies key trends, providing stakeholders with actionable insights for targeted interventions and mitigating the impact of suicide in Nebraska. Leveraging sophisticated data analysis techniques, we strive to unravel deeper insights that guide evidence-based approaches, ensuring our efforts are both effectual and informed. With a dedication to leveraging data-driven solutions, we navigate the complexities of suicide prevention, striving for meaningful impact in our community.

# Our Team

## Ashley Miller, MPA

NEVDRS/SUDORS Program Manager  
Ashley.M.Miller@nebraska.gov

## Can Ceyhan

NEVDRS/SUDORS Data Analyst  
Can.Ceyhan@nebraska.gov

## Lifeng Li

Injury Epidemiologist  
Lifeng.Li@nebraska.gov

# Contact

## Website

<https://dhhs.ne.gov/Pages/Violent-Death-Reporting.aspx>

## Mailing Address

P.O. Box 95026, Lincoln, Nebraska  
68509-5026

# The Data

Below are examples of data elements we collect, and it's essential to recognize that this list is not exhaustive. We collect over 600 unique data elements for each death from various departments and organizations. This extensive data serves as the foundation for generating data dashboards, factsheets, frameworks, maps, and special topics reports. These comprehensive resources enable us to provide a detailed and multifaceted understanding of the factors surrounding suicide deaths in Nebraska, empowering informed strategies for prevention and intervention.

- Demographic Information
- Injury/Death Location
- Cause and Manner of Death
- Mental Health Conditions and Treatment
- Mental Health Diagnosis Information
- Alcohol or Substance Abuse and Treatment
- Suicidal Ideation and Attempt History
- Relationship Problems
- Marital Status
- Financial Problems
- School Problems
- Housing Situation
- Legal Problems
- Toxicology Reports
- Geolocation Data



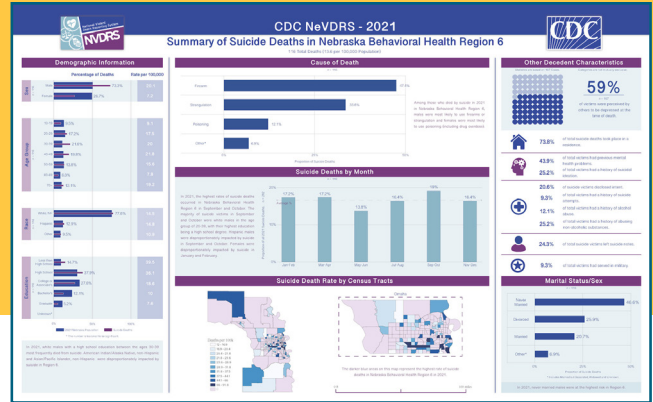
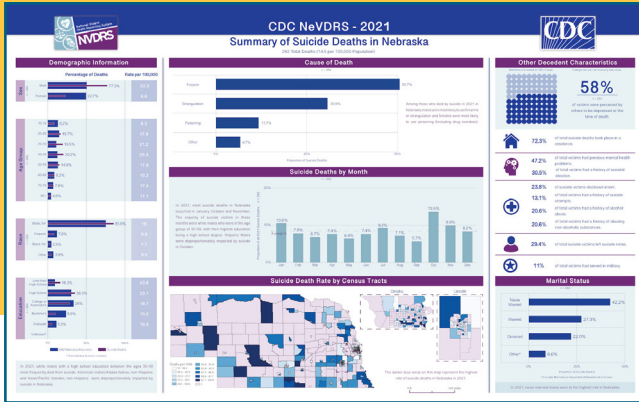
# List of Projects

In addition to our published factsheets, available on our website, we are actively involved in various ongoing projects. The following list is not all-inclusive but provides an overview of our current initiatives.

- Factsheets
- Special Topics Factsheets
- Annual Frameworks
- Data Dashboards
- Suicide Vulnerability Report

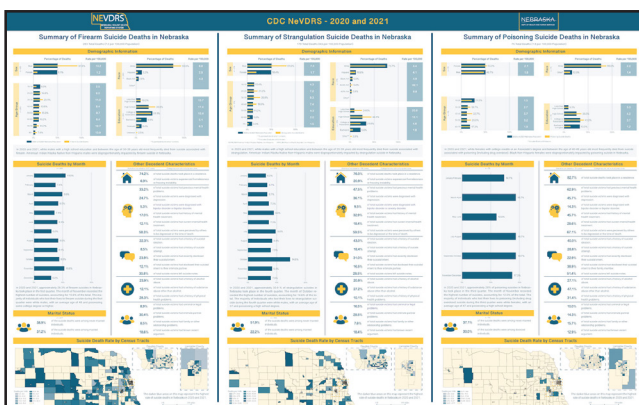
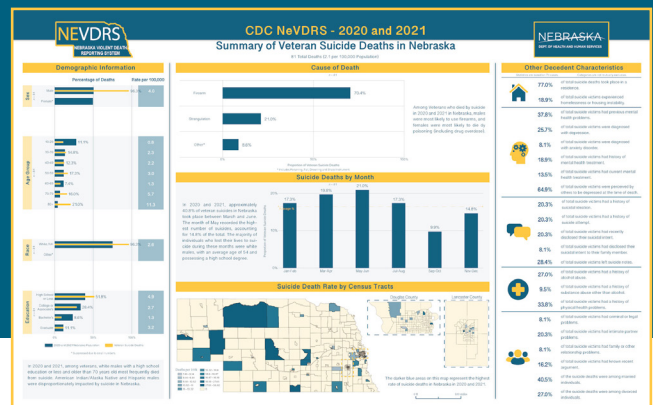
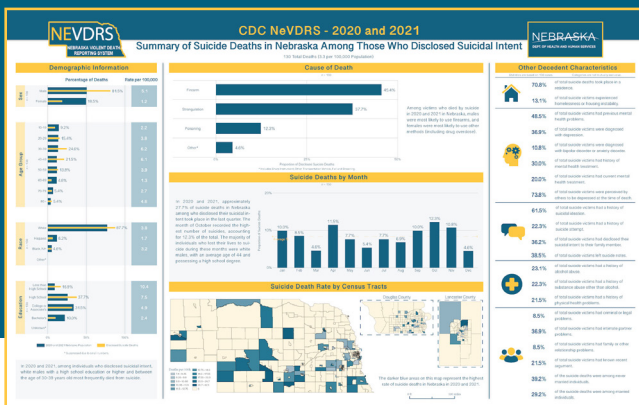
# Factsheets

We have released a series of suicide death factsheets on our website, offering a broad overview of suicide deaths in Nebraska. Our primary focus has been on three distinct regions and the entire state of Nebraska. These factsheets aim to provide essential statistics regarding suicide deaths, reserving the more intricate data for our comprehensive framework. The suicide death factsheets we've published can be found [here](#). Additionally, we plan to create similar-format factsheets for future years.



# Special Topics Factsheets

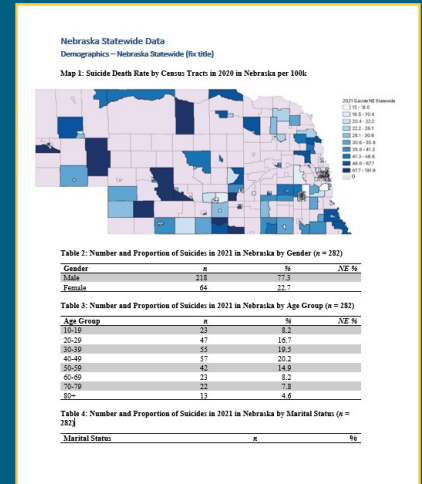
In addition to our regional suicide death factsheets, we have also published special topics factsheets for the years 2020 and 2021. These factsheets delve into specific subjects such as “youth suicide deaths,” “disclosed intention suicide deaths,” “veteran suicide deaths,” “different suicide methods deaths,” and more. While most of these factsheets are available on our website, a few are still pending publication.



We have compiled comparison factsheets, highlighting three major distinct methods of suicide, allowing our audience to easily compare different methods on a single sheet. For more details, please refer to the image on the left.

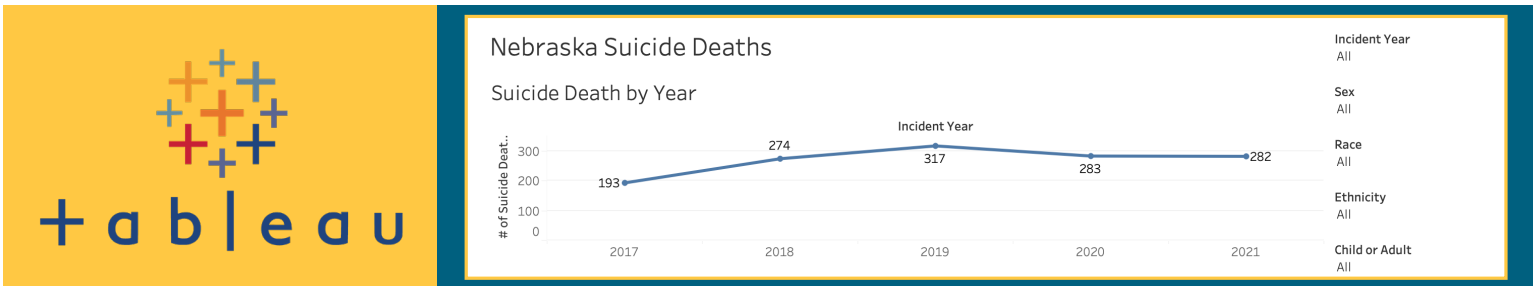
# Annual Frameworks

The Annual Frameworks stand as a comprehensive expansion of our factsheets, presenting a trove of additional details while upholding strict patient privacy standards. Delving into the annual suicide deaths in Nebraska, our Frameworks offer an exhaustive analysis without compromising individual privacy. This encompasses detailed toxicology reports and profound insights into the broader circumstances surrounding these incidents, ensuring anonymity and confidentiality. Furthermore, we are diligently finalizing the 2020 and 2021 Frameworks, guaranteeing the inclusion of the latest data and insights while maintaining our commitment to safeguarding patient confidentiality. Our efforts are rooted in providing precise and current information while respecting the privacy and dignity of those involved.



# Data Dashboards

We are excited to announce the development of a fully interactive suicide data dashboard. This robust tool will encapsulate a significant portion of our database, empowering users with extensive customization capabilities. Currently in the building process, we've chosen Tableau as our visualization tool for its effectiveness. Once complete, the data dashboard will seamlessly integrate with the NeVDRS site under DHHS, providing an enhanced and user-friendly experience for accessing and analyzing vital suicide data. Stay tuned for updates on this innovative initiative! In line with our commitment to respecting victims' privacy, we want to emphasize that any data displayed will not include counts of fewer than 6 deaths, ensuring the protection of sensitive information. Stay tuned for updates on this innovative initiative!





## Future Plans

---

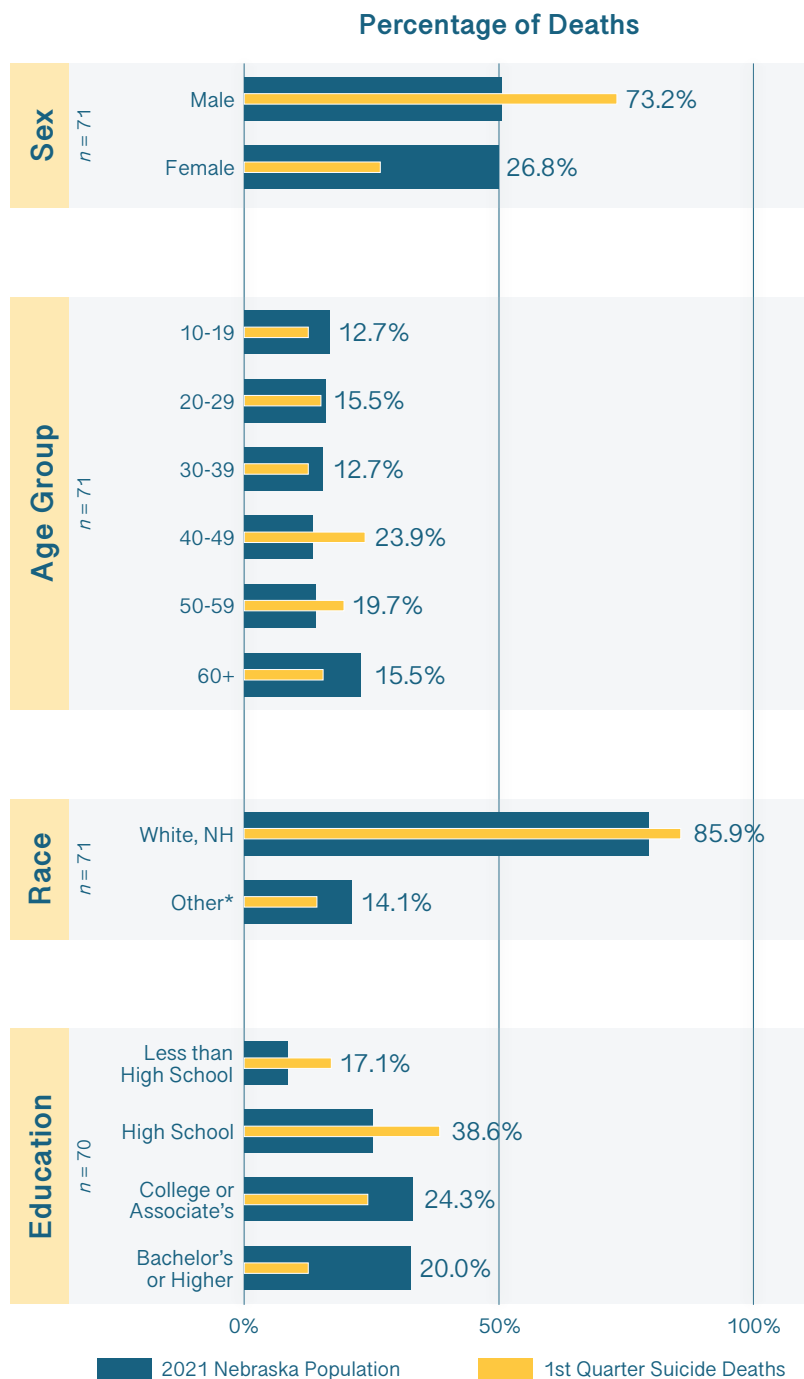
Our current priority is finalizing the frameworks for suicide deaths in Nebraska for the years 2020 and 2021. Following this, our focus will shift towards developing interactive data dashboards, which will be integrated into the NEVDRS website for public access. As we anticipate the release of 2022 data, we are preparing to generate factsheets and special topics factsheets to provide comprehensive insights into the latest information.

Our commitment to transparency and timely reporting ensures that the public and stakeholders have access to accurate and meaningful data for a more informed understanding of suicide trends in Nebraska. Thank you for your ongoing support, and we look forward to fostering greater awareness and collaboration in addressing this important public health issue. Stay tuned for these upcoming updates!

# Suicide Deaths in the 1st Quarter of 2021

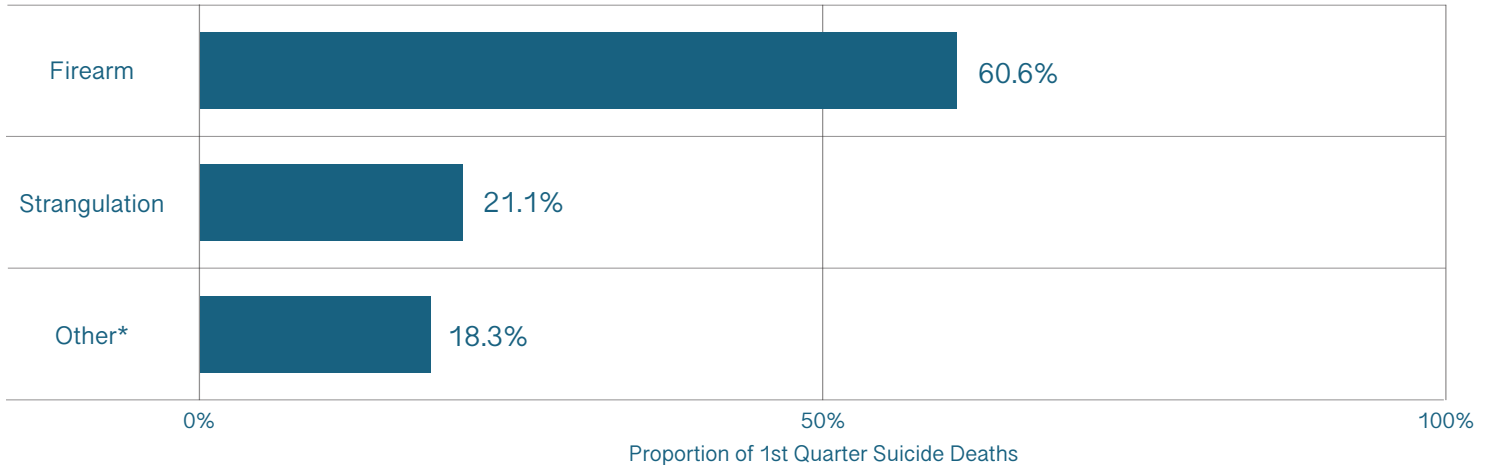
This segment delves into the suicide deaths during the 1st quarter of 2021. As we await the most recent year's data, our focus is on the latest available information correlated to the newsletter's issue date. Providing a concise overview, this section offers insights into the demographics and circumstances surrounding the events of the quarter.

## Demographic Information



\* Includes Hispanic, Black NH, Asian/Pacific Islander NH, Native American/Alaskan Native NH, Two or More Races

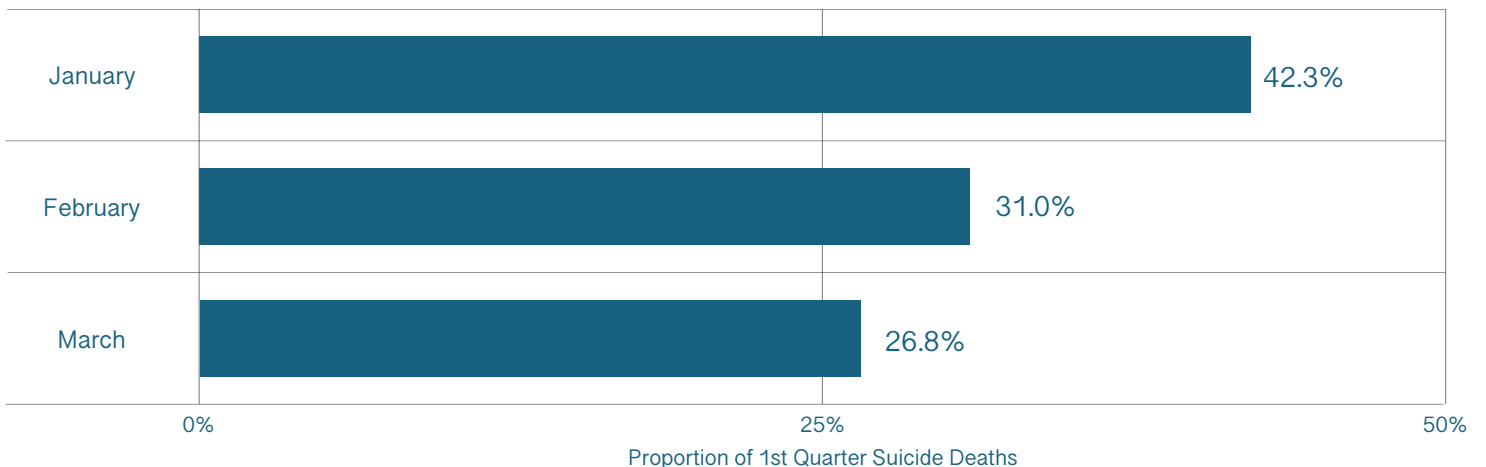
## Cause of Death



\* Includes Fall, Sharp Instrument, Other Transportation Vehicle, Drowning and Motor Vehicle

In the 1st quarter of 2021, among suicide victims in Nebraska, firearms emerged as the predominant method, with the majority of victims opting for this means. The average age for those who died by firearm-related suicide was 46, while strangulation incidents occurred at an average age of 35. Notably, females tended to use strangulation or poisoning methods, while the majority of males opted for firearms.

## Suicide Deaths by Month



In the first quarter of 2021, around 73.2% of suicide victims in Nebraska were males. Notably, January witnessed the highest number of suicides, accounting for 42.3% of the total incidents. The predominant demographic among those who lost their lives to suicide during this period were white males, averaging 43 years of age and typically holding a high school degree.

# Decedent Characteristics and Contributing Circumstances

Statistics are based on 65 cases.

Categories are not mutually exclusi



**76.9%** of total suicide deaths took place in a residence.

**56.9%** of total suicide victims had previous mental health problems.

**44.6%** of total suicide victims were diagnosed with depression.



**10.8%** of total suicide victims were diagnosed with anxiety disorder.

**24.6%** of total suicide victims had history of mental health treatment.

**18.5%** of total suicide victims had current mental health treatment.

**61.5%** of total suicide victims were perceived by others to be depressed at the time of death.

**30.8%** of total suicide victims had a history of suicidal ideation.

**16.9%** of total suicide victims had a history of suicide attempt.



**26.2%** of total suicide victims had recently disclosed their suicidal intent.

**12.3%** of total suicide victims had disclosed their suicidal intent to their intimate partner.

**36.9%** of total suicide victims left suicide notes.



**29.2%** of total suicide victims had a history of alcohol abuse.

**18.5%** of total suicide victims had a history of substance abuse other than alcohol.

**21.5%** of total suicide victims had a history of physical health problems.

**26.2%** of total suicide victims had intimate partner problems.

**9.2%** of total suicide victims had family or other relationship problems.



**15.4%** of total suicide victims had known recent argument.

**43.1%** of the suicide deaths were among never married individuals.

**27.7%** of the suicide deaths were among married individuals.