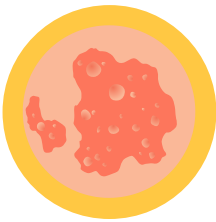


# Measles Alert

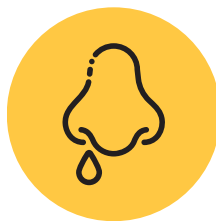
If you have a **FEVER** and any of the following symptoms...



Rash



Cough



Runny Nose



Red, watery  
eyes

**OR** been in contact with someone known or suspected to have measles in the past 21 days

Unless it is a medical emergency,  
**DO NOT ENTER OUR FACILITY!**



Please wait outside and call our front desk  
for instructions.