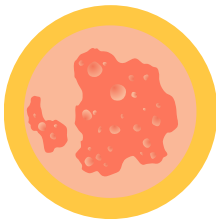


Measles Alert

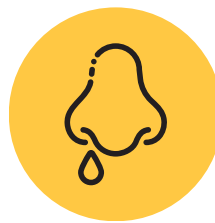
If you have a **FEVER** and any of the following symptoms...



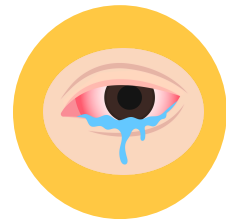
Rash



Cough



Runny Nose



**Red, watery
eyes**

AND have recently traveled to:

OR been in contact with someone known or suspected to have measles in the past 21 days



Unless it is a medical emergency, **DO NOT ENTER OUR FACILITY!**

Please wait outside and call our front desk for instructions.