
N-FOCUS Interim Release

Combined All Divisions

June 22, 2025

An Interim Release of the N-FOCUS System is being implemented 6-22-2025. This document provides information explaining new functionality, enhancements and problem resolutions made effective with this release. This document is divided into four main sections and addresses all of the Divisions, MLTC, EA, CFS and DD.

General Interest and Mainframe Topics: All N-FOCUS users should read this section.

ACCESSNebraska: N-FOCUS workers responsible for case activity received through ACCESSNebraska web portal should read this section.

Home and Community Based Services: NFOCUS workers who work directly with DD Programs and those who work with the related Medicaid cases should read this section.

Note: This section will only appear when there are tips, enhancements or fixes specific to Developmental Disabilities Programs.

Expert System: All N-FOCUS workers with responsibilities for case entry for AABD, ADC, SNAP, LIHEAP, Medicaid, etc. should read this section.

Note: When new functionality is added to N-FOCUS that crosses multiple topics (i.e., General Interest and Mainframe, Alerts, Correspondence, Expert System etc.) the functionality will be described in one primary location. This location will usually be the General Interest and Mainframe section or the Expert System section. Alerts Work Tasks and Correspondence that are part of the new functionality may be documented in both the primary location that describes the entire process in addition to being in the Alerts, Work Tasks and Correspondence sections.

Interfaces, Document Imaging and N-FOCUS Tips sections will be added as appropriate for the release.

Table of Contents

General Interest and Mainframe	3
EA – Child Care Service Authorizations Dating (Change)	3
CFS/MLTC – Adding CFS program to Alerts created based on Crime Commission Nebraska Criminal Justice Information System (NCJIS) data (Change)	3
ACCESSNebraska.....	4
Submit Documents Return Email Wording Change and Date Issue (Fix).....	4
Home and Community Based Services	4
DD – Waiver Correspondence Spacing Issue (Fix)	4
DD- AD/TBI Waiver Claim Adjustments (Fix)	4
Interfaces	4
MLTC/DD - Medicaid Provider Directory Project Maximus, N-FOCUS, Therap, Netsmart Data Exchanges (Change)	4
Expert System.....	5
MLTC – Flex Budgeting Skip Function (Fixes).....	5
MLTC – Flex Budgeting Budget Purpose and Expiry Date Issue When Moving from one Master/Program Case to Another (Fix)	5
MLTC – Notices Task Error (Fix)	5

General Interest and Mainframe

EA – Child Care Service Authorizations Dating (Change)

The following updates have been made to Child Care service authorizations:

New Authorization

Workers will be able to end a new authorization for a child that is having an age change between the begin date of the authorization plus the next months prior to the age change.

Ex. Child turns 18 months in November. The authorization is being created for 10/01 – 10/31. Prior to the release the authorization was requiring an end date in November. Now the worker will be able to end the auth prior to November if needed.

Renew Authorization

The hard stop that was not allowing workers to create an authorization beyond the age change for a child has been removed. The pop-up will remain informing workers that the child could be out of correct age category.

CFS/MLTC – Adding CFS program to Alerts created based on Crime Commission Nebraska Criminal Justice Information System (NCJIS) data (Change)

With this release, CFS workers will receive alerts when IV-E program participants have been incarcerated for 30 days, are released, transferred, or should be closed. Note that alerts #652, 653 and 654 will only populate for a previously IV-E funded individual if alert #651 was previously created on the case.

Alert # 651 – Incarcerated 30 days

This alert is created when an IV-E individual with an Active or Pending participant in a CFS case has been incarcerated for at least 30 days. The alert will prompt the case worker to evaluate the individual's eligibility and change the funding until further notice.

Alert # 652 – Inmate Case Closure

This alert is created when an incarcerated individual in a CFS case that was previously IV-E funded has died, escaped, or been transferred to another state and therefore necessitates review of the case.

Alert # 653 – Incarceration Release

This alert is created when an incarcerated individual in a CFS case that was previously IV-E funded is released.

Alert # 654 – Transferred to Facility

This alert is created when an incarcerated individual in a CFS case that was previously IV-E funded has been transferred to a different facility or community agency.

ACCESSNebraska

[Submit Documents Return Email Wording Change and Date Issue \(Fix\)](#)

The language in the processed email sent back to the individual who submitted the document has been updated to clarify the business process. Instead of noting the documents have been automatically forwarded to a Case Manager to take action and determine eligibility, it now indicates the documents will be processed in order received and to not reply to the unmonitored email address that sent the message. The language is in English and Spanish. (This was released on June 3rd).

A defect that was intermittently setting the 'sent on' date incorrectly in the processed email sent back to the individual who submitted the document(s) will be resolved with this release.

Home and Community Based Services

[DD – Waiver Correspondence Spacing Issue \(Fix\)](#)

The state's central printing team notified N-FOCUS that they were seeing spacing issues with the Waiver Level of Care Notice, Waiver Eligibility Notice and Waiver Notice of Determination in which the address was not aligning with the window on the envelope. They were manually handing these letters once it was discovered. The issue was resolved with the June 18th batch release.

[DD- AD/TBI Waiver Claim Adjustments \(Fix\)](#)

With the April major release, an issue was found where paid claims with a date of service on or after 5-1-2025 could not be adjusted. This has been resolved.

Interfaces

[MLTC/DD - Medicaid Provider Directory Project Maximus, N-FOCUS, Therap, Netsmart Data Exchanges \(Change\)](#)

As part of the Medicaid Provider Directory project, the Medicaid provider screening and enrollment system, Maximus, will be sending N-FOCUS new provider

data elements including the National Provider Identifier (NPI). These new data elements will not be displayed on the N-FOCUS organization with the release, but the NPI will be displayed in a future release. The data is being passed to the Employee Visit Verification (EVV) system, Netsmart, as well as the DD case management system, Therap.

Expert System

MLTC – Flex Budgeting Skip Function (Fixes)

There are two issues related to the Skip function that will be resolved in this release:

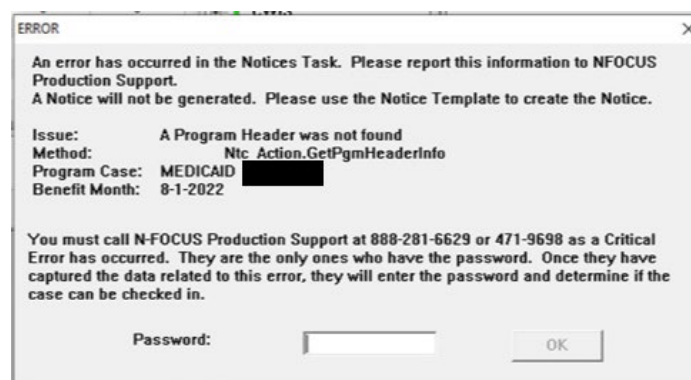
1. When a worker requested to Skip the budget for an individual, the system should have created a high-dated (no end date) budget but did not. This was causing downstream issues such as not passing the eligibility to the Medicaid Management Information System (MMIS).
2. In certain instances of Skipping the budget, the system was creating multiple budgets in the same month for individuals that were not skipped.

MLTC – Flex Budgeting Budget Purpose and Expiry Date Issue When Moving from one Master/Program Case to Another (Fix)

There was an issue when a person was transferred from one master case to another or one program case to another within the same master case. The system set the budget purpose to 'Initial' and set a new Expiry Date for the person rather than setting the budget purpose to 'Change' and retaining the existing Expiry Date. This has been resolved.

MLTC – Notices Task Error (Fix)

When attempting to run the notices task for where the person's previous program category has been made obsolete, an abend occurred with the following error:



This issue has been resolved.