

---

# N-FOCUS Interim Release

## Combined All Divisions

### June 16, 2024

---

An Interim Release of the N-FOCUS System is being implemented June 16, 2022. This document provides information explaining new functionality, enhancements and problem resolutions made effective with this release. This document is divided into four main sections and addresses all the Divisions, MLTC, EA, CFS and DD.

**General Interest and Mainframe Topics:** All N-FOCUS users should read this section.

**ACCESSNebraska:** N-FOCUS workers responsible for case activity received through the Web Based Electronic Application should read this section.

**Expert System:** All N-FOCUS workers with responsibilities for case entry for AABD, ADA Payment SNAP, LIHEAP, LIHWAP, CC, FL, MED, Retro MED should read this section.

**Note:** When new functionality is added to N-FOCUS that crosses multiple topics (i.e., General Interest and Mainframe, Alerts, Correspondence, Expert System etc.) the functionality will be described in one primary location. This location will usually be the General Interest and Mainframe section or the Expert System section. Alerts Work Tasks and Correspondence that are part of the new functionality may be documented in both the primary location that describes the entire process in addition to being in the Alerts, Work Tasks and Correspondence sections.

Interfaces, Document Imaging and N-FOCUS Tips sections will be added as appropriate for the release.

---

# Table of Contents

---

<b>General Interest and Mainframe .....</b>	<b>3</b>
CFS - Organization Window Facility Type (Update) .....	3
CFS – AFCARS Tribal Affiliation (Update) .....	3
<b>Correspondence .....</b>	<b>4</b>
MLTC - CBI Speednote (Fix) .....	4
<b>Interfaces .....</b>	<b>4</b>
EA, MLTC - Entering Correct Alien Number (Update).....	5
<b>Expert System.....</b>	<b>8</b>
MLTC - TMA Premium Fee Schedule (Update) .....	8
EA – SNAP ABAWD Status Fix .....	8

## General Interest and Mainframe

### CFS - Organization Window Facility Type (Update)

With this release, the Organization window will accept the Facility Type of Relative Foster Home Licensed to be added to the Organization after the type of Tiered Fostered Care (Licensed) had previously been added with an Active Waiver.



The screenshot shows the N-FOCUS - Detail License/Approval window. The Organization Name is FAMILY'S FIRST SERVICES. The Licensed As Name is FAMILY'S FIRST. The Licensing Agent is TOOTSIE ROLL. The Facility Type field is highlighted with a red box and contains the text: RELATIVE FOSTER HOME (LICENSED) and TIERED FOSTER CARE (LICENSED). The License/Approval is Foster Care Home (License). The Number Of Children is 2. The Application Received Date is 06-11-2024. The Waiver Granted is Yes. The Status is ACTIVE. The Effective Dates are Begin: 06-11-2024 and End: 06-11-2026. The Sex is either, Female, or Male. The Minimum Age is 0 Years and the Maximum Age is 18 Years. The License Amended checkbox is unchecked. The window title is N-FOCUS - Test Date 06-11-2024 15:52.

### CFS - Tribal Affiliation (Update)

With this release, logic was added to capture Tribal Affiliation.

- If a child is marked Yes to the question "Is there any information that indicates a child in this household may be an Indian child and/or eligible to be in an Indian Tribe?" it is required to be answered prior to being able to Save.
  - Answering this question is not required. What has changed is that when the update button is used, the edit for the Tribal contact question will be enforced.
- An update button was added to make changes to the information.

Prior to this release, when printing a Service Referral, workers were able to choose two mutually exclusive choices for Tribal Affiliation (Adding a Tribe and Tribe Not Identified). With this release, only one option will be able to be selected.

- From the Detail Intake window, select the Tribal pushbutton.
  - The Intake Tribal Affiliation window will display.
- Select the Child/Identified Child from the list box that is labeled as No.
- Click the Yes button.
- Click the out select arrow .
  - The List Tribal window will display.
    - Select the appropriate Tribe and select the return arrow 
    - The Intake Tribal Affiliation window will display with the selected Tribe indicated.
- Answer the question “Has contact with the tribes been attempted?” (Yes, No or Not Applicable)
- Enter the appropriate Narrative.
- Save or Save and Close

**Note:** Prior to this release the worker was able to answer the question “Has contact with the tribes been attempted?” when a tribal affiliation was not selected. This has been fixed.

Also, prior to this release, there was an error that occurred when attempting to clear a child’s Tribal Affiliation. This has been fixed.

## Correspondence

---

### MLTC - CBI Speednote (Update)

---

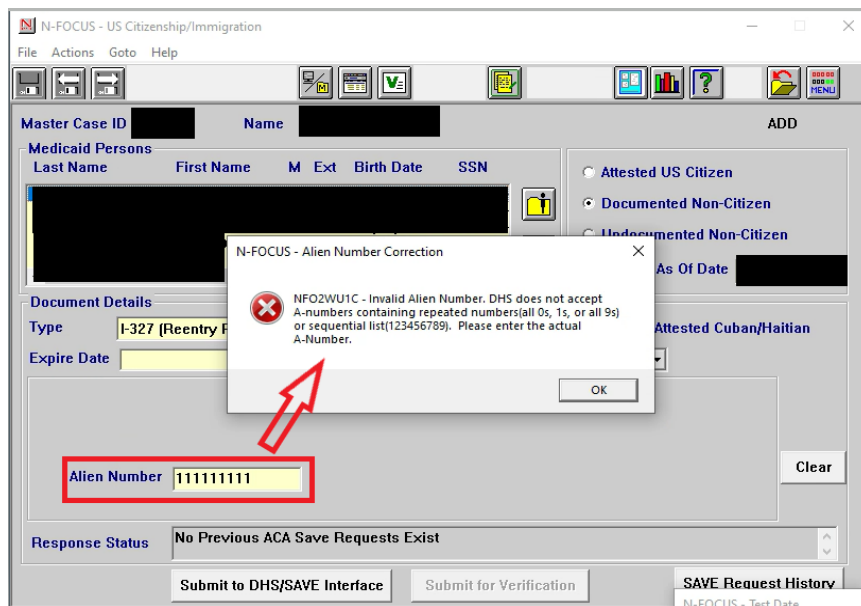
EA and MLTC Speednotes will now be available to view in the Client Benefit Inquiry (CBI) application on ACCESSNebraska.

## Interfaces

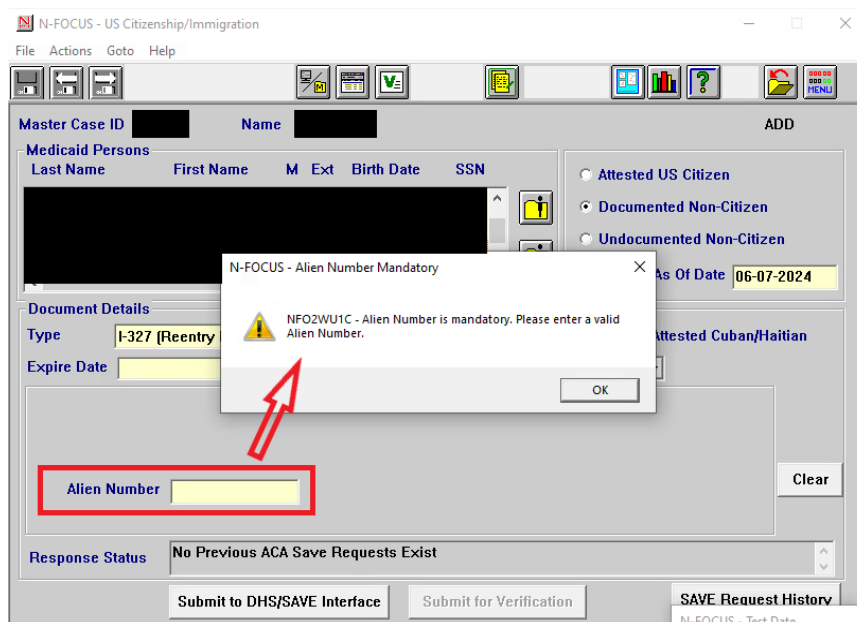
### MLTC - Entering Correct Alien Number (Update)

After the Verify Lawful Presence (VLP) version was updated, the Federal Data Services Hub (HUB) introduced new rules for Alien Numbers. Submissions with invalid Alien Numbers (**i.e., repeated numbers (all 0s, 1s, or all 9s) and sequential list (123456789)**) will block VLP requests from getting through to the HUB, resulting in an "Invalid A-Number" status. Prior to this release, submissions with invalid values were acceptable. With this release, N-FOCUS's new logic implementation aims to prevent workers from entering invalid values, as well as mandate the entry of actual Alien Number as required by HUB.

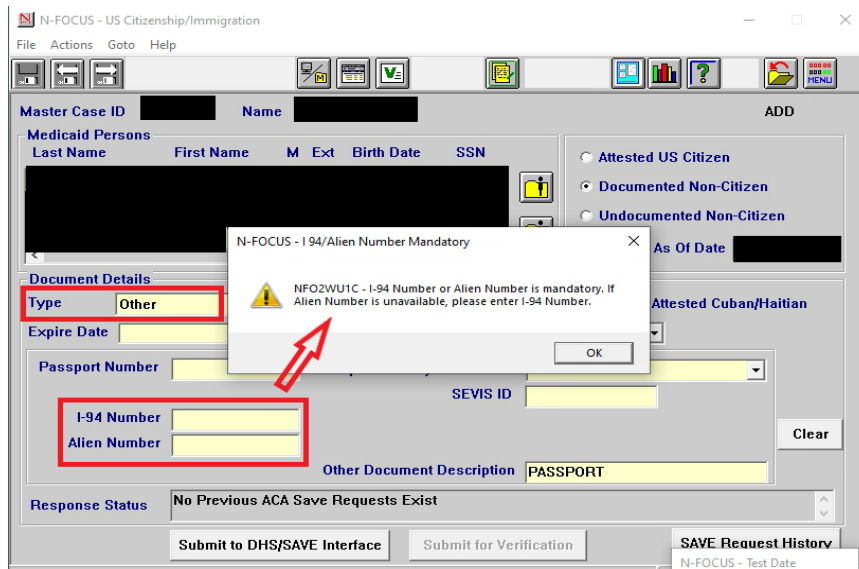
- N-FOCUS will no longer accept entries of repeated numbers (all 0s, 1s, or all 9s) and sequential list (123456789) for Alien Numbers.
  - The Alien Number Correction message will display to prompt the worker to enter the correct number.
- This change affects the following document types as required by the HUB:
  - I-327 (Reentry Permit)
  - I-551 (Permanent Resident card)
  - Machine Readable Immigrant Visa
  - Temporary I-551 Stamp (on Passport or I94)
  - I-571 (Refugee Travel Document)
  - I-766 (Employment Authorization Card)
  - Document Type "Other"



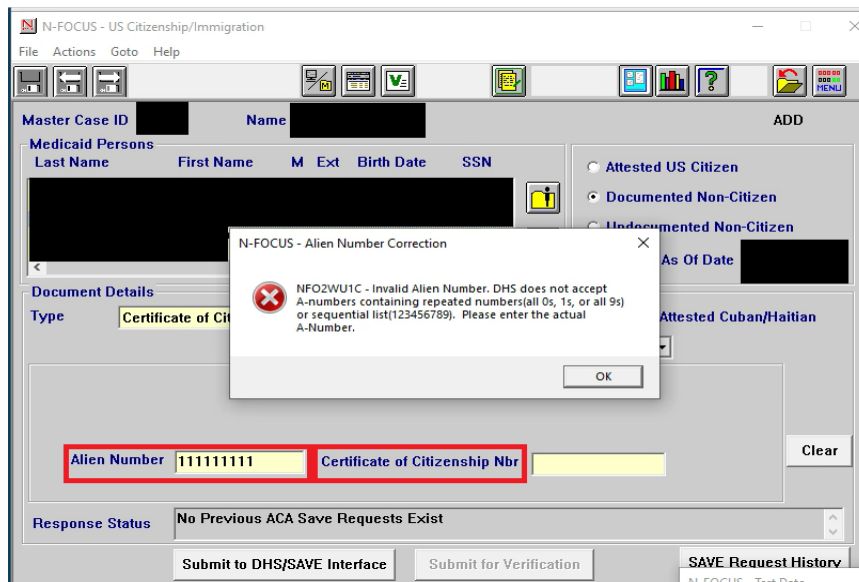
- N-FOCUS will no longer automatically prefill zeros (000000000) for Alien Number.
  - The Alien Number Mandatory message will display to prompt the worker to enter the correct number.
- This change affects the following immigration document types:
  - I-327 (Reentry Permit)
  - I-551 (Permanent Resident card)
  - Machine Readable Immigrant Visa
  - Temporary I-551 Stamp (on Passport or I94)
  - I-571 (Refugee Travel Document)
  - I-766 (Employment Authorization Card)



- N-FOCUS will prompt the entry of either **I-94 Number** OR **Alien Number** when submitting using document type "Other" in US Citizenship and Immigration window –
  - If Alien Number is unavailable the worker must enter the I-94 Number.



- The Alien Number value is optional for document types of **Naturalization certificate** and **Certificate of Citizenship**.
  - N-FOCUS has been updated to no longer accept the entry of repeated numbers (all 0s, 1s, or all 9s) and sequential list (123456789) for Alien Numbers for these documents.
  - The Alien Number Correction message will display.



## Expert System

---

### [MLTC - TMA Premium Fee Schedule \(Update\)](#)

---

The TMA Premium Fee Schedule has been updated with 2024 Transitional Medical Assistance (TMA) Fee Schedule levels for family sizes 1 through 8 for renewals that will be effective October 1<sup>st</sup>, 2024.

### [EA – SNAP ABAWD Status \(Fix\)](#)

---

Logic was added to Expert System to update ABAWD data for ARPs aged 60 or older. Since workers are unable to manually update Work Requirement windows for these ARPs, the logic added will perform a check upon SNAP case check-out to end-date any existing ABAWD rows. This will tie in with the logic added for the May Major Release to check for Work Requirement rows.