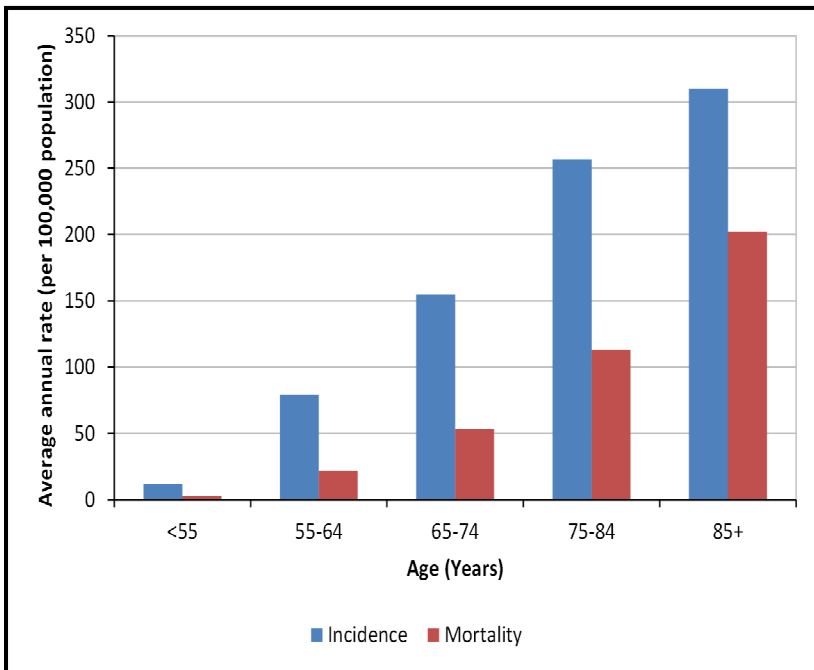




Colorectal (Colon & Rectum) Cancer in Nebraska

Figure 1. Colorectal Cancer Incidence and Mortality Rates, by Age, Nebraska (2011-2015)



Nebraska Colorectal Cancer Quick Facts:

- Between 2011 and 2015, 4,527 Nebraska residents were diagnosed with colorectal cancer, while 1,692 Nebraska residents died from it.
- The rate at which colorectal cancer occurs (incidence) and the rate at which people die from it (mortality) increase with age (Figure 1).
- Colorectal cancer incidence and mortality in Nebraska and the United States followed a downward trend in recent years (Figures 2 & 3).
- Colorectal cancer incidence and mortality rates are higher in Nebraska compared to the United States (Figures 2 & 3).

Figure 2. Colorectal Cancer Incidence Rates, by Year of Diagnosis, Nebraska & US (2006-2015)

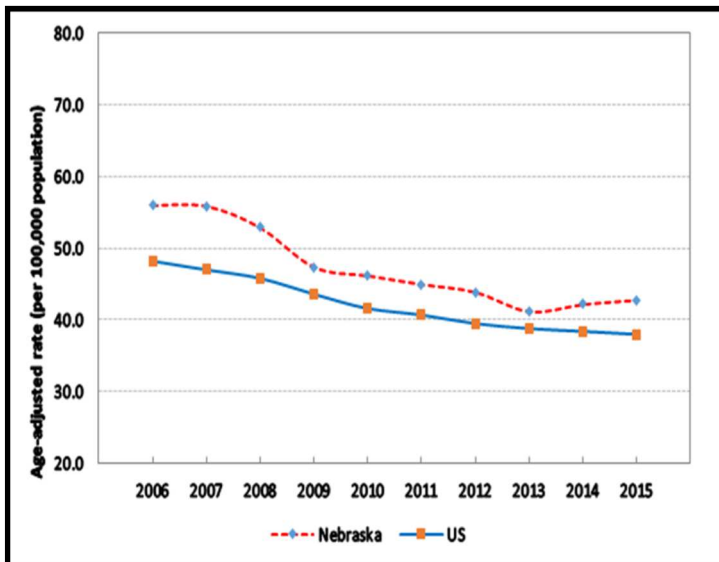
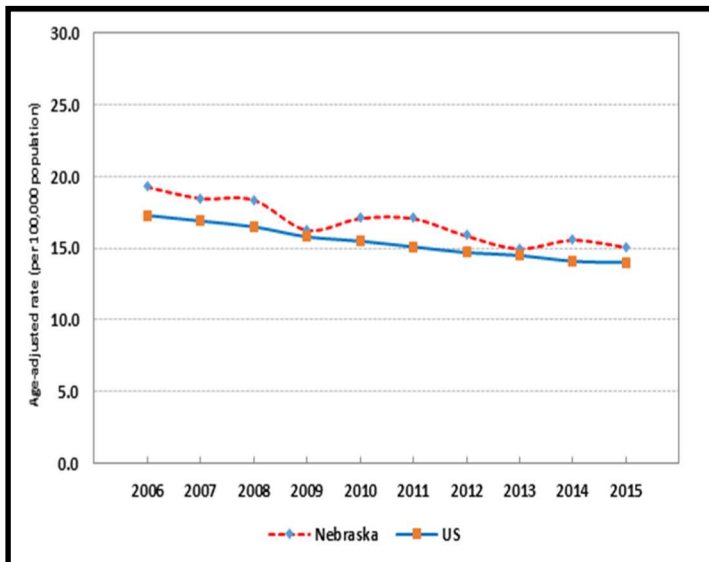
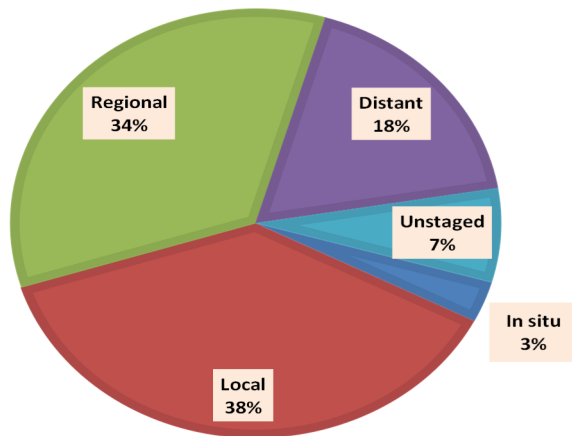


Figure 3. Colorectal Cancer Mortality Rates, by Year of Death, Nebraska & US (2006-2015)



**Figure 4. Colorectal Cancer
Percentage of Cases, by Stage of Disease at Diagnosis, Nebraska, 2011-2015**



- Between 2011 and 2015, the majority of colorectal cancer cases in Nebraska were diagnosed at the local (38%) or regional stage (34%) (Figure 4).
- Stage of disease at diagnosis strongly affects the prognosis for colorectal cancer patients. The most recent national data show that the 5-year relative survival rates for colorectal cancer are 90% for early stage (local and in situ) diagnoses, while rates for later stage cases fall to 71% for regional diagnoses and 14% for distant diagnoses.

Colorectal Cancer Risk Factors and Screening

- Risk factors for colorectal cancer include age, African American race, personal or family history of colorectal cancer or polyps, chronic inflammatory bowel disease, inherited syndromes, physical inactivity, obesity, type 2 diabetes, smoking, heavy alcohol consumption, and a high-fat diet.
- Recommended colorectal cancer screening tests include several types of stool tests, flexible sigmoidoscopy, colonoscopy, CT colonography (virtual colonoscopy), and double-contrast barium enema. Frequency of testing varies by test type. For people of average risk, the American Cancer Society recommends screening begin at age 45.
- According to data collected by the Behavioral Risk Factor Surveillance System in 2016, 66.0% of Nebraska residents 50-75 years of age reported that they been screened for colon cancer as recommended.
- If you are a Nebraska resident 50-75 years of age and meet certain income guidelines, you may be eligible for free or low-cost colorectal cancer screening tests. For more information, visit the Nebraska Colon Cancer Screening Program at <http://dhhs.ne.gov.crc> or call (800) 532-2227.

About the Nebraska Cancer Registry

- ◆ **Purpose:** to document new cases of cancer among Nebraska residents; analyze geographic patterns and long-term trends; provide statistical and other information about cancer in Nebraska in response to specific requests; and plan and evaluate cancer control programs.
- ◆ **Funding:** funded by a portion of the Nebraska cigarette tax and also by a grant from CDC.
- ◆ **Data Sources:** hospitals, pathology laboratories, outpatient therapy sites, physician offices, death certificates, and cancer registries in other states.
- ◆ **Data Quality:** the NCR has been awarded gold standard certificate of data quality for 21 consecutive years (1995-2015) by the North American Association of Central Cancer Registries in recognition of the accuracy and completeness of the data.



This publication is supported by Cooperative Agreement Grant Number NU58DP006278 from the Centers for Disease Control and Prevention (CDC). Its contents are solely the responsibility of the authors and do not necessarily represent the official view of CDC.



To learn more about the Nebraska Cancer Registry, or to view additional fact sheets and reports, visit: http://dhhs.ne.gov/publichealth/Pages/ced_cancer_data.aspx.