





Budget Breakdown

Income:	
\$13/hour	
x 32 hours/wk	
x 4 weeks	

\$1,664.00	
Assistance:	
\$400 Food Assistance	
\$600 Childcare Assistance	

Expenses	
Rent:	\$700
Car Payment	\$200
Phone (pay as you go)	\$60
Utilities	\$150
Diapers/Toiletries/Misc.	\$200
Childcare (subsidy covers \$600/mo)	\$200
Gas & Auto Insurance	\$150
Total	\$1,660
Remaining for Savings	\$4

Bryan's Keys to Success to Speaking with Families in Crisis*

- Remember: A person in crisis is thinking in the moment only. Try to put yourself in their shoes.
- Don't ask: What do you need?
- Ask: What's most important to you?
- Don't wait to speak
 - 1) Listen to the person's entire story.
 - 2) Pick 3 items to help and write them down.
 - 3) Follow up the next day to see what was done.
 - 4) Stay positive. Follow up again.
 - 5) Show you care → Build the relationship.



* Patent Pending

What does a living wage pay?

MIT Living Wage Calculator (2016)

• **Basic Needs + Savings**
 2 adults, 2 children
 Minimum Wage: \$5/hour
 Poverty: \$9/hour
 Living: \$12.65

1 adult, 2 children
 Minimum Wage: \$9/hour
 Poverty: \$9/hour
 Living: \$28.57

What does a living wage look like?

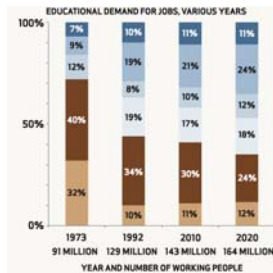
- Certification
- Benefits
- Housing Stability
- Bank Account & Credit
- Home Ownership
- No criminal record
- Career Pathway
- Pride & Growth
- Your neighbor

Job → Career

- Lincoln will add 20,000 jobs between 2010-2020.
- Increase of 11%
- Retirements

Resources:

- American Job Center
- Southeast Community College
- **Key: Certification**



State-wide Resources

- Department of Labor
 - Virtual Services Unit: Phone-based resume, job search assistance
 - Apprenticeships: Registered and growing! Kidwell example.
 - NE Works: Statewide job website with career assessment
- American Job Center
 - In-person assistance
 - Omaha, Lincoln, Grand Island- <https://www.dol.nebraska.gov/Home/AboutUs>
 - Lincoln Business Task Force
 - Case Manager/Employer Events
- Training
 - OJT and Community College
 - GAP Scholarship
- Community Action



DHHS Resources

- DHHS Community/Alternative Response
 - Resource Handbooks
- http://dhhs.ne.gov/children_family_services/Pages/children_family_services_alternative-response.aspx
- <https://nrns.ne.gov/usersearch/>



Systems Connection

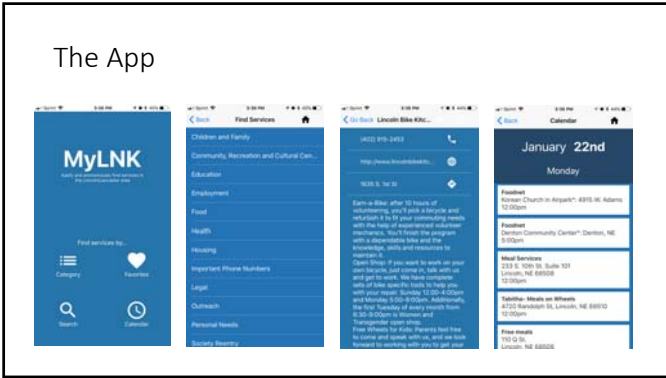
- EmployLNK
- United workforce development outreach
 - Veterans Fair, Job Seeker Fair
 - Case Manager Awareness

- Match job description to ESL level
- Duncan Aviation & Lincoln Industries

- Map career track & illustrate benefits
- Increase retention
 - Understanding of benefits



The App



Why an app?

28% of families with less than \$20k income don't have Internet access at home

16% of families between \$20-75k income don't have Internet access at home

Most people have a smart phone

Many people do not know about available resources

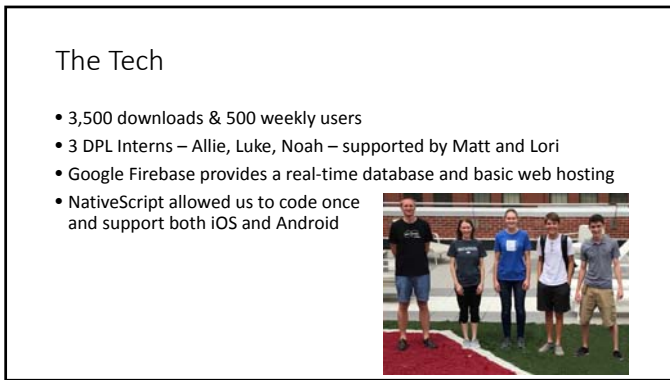
Meet people where they are

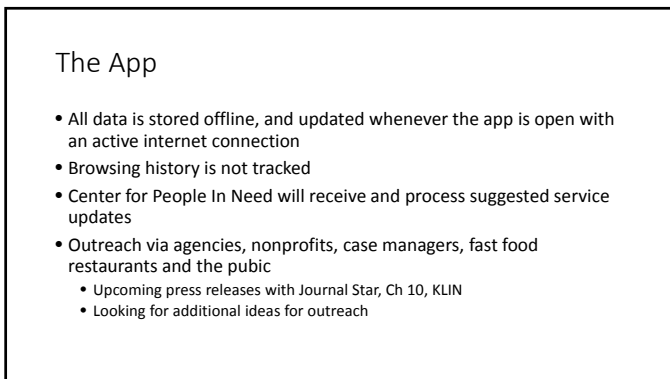
Knowledge
+ Connection

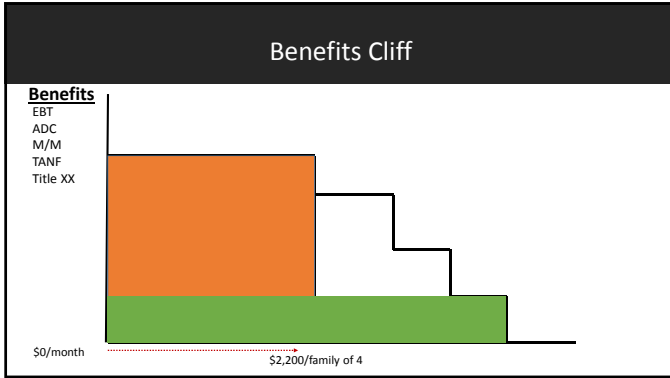
Resource Utilization

- Resource Hubs:
- American Job Center
 - 211
 - Center for People in Need
 - Department of Health and Human Services: Community Response
 - Case Managers
 - Faith Communities
 - Schools/Post-secondary
 - You









Contact Information

- info@cfpin.org
- bryan.seck@prosperlincoln.org
- Update data or add organization
