

- Gubernatorial Appointees
- Director Appointees

Division of Developmental Disabilities
 Jodi Fenner, Director

Admin Assistant I
 Kim McFarland

Community-Based Services
 Tricia Mason, Administrator

Staff Asst II
 Lelia Razey

Deputy Administrator
 of Quality Improvement
 Kathie Lueke

Staff Asst I
 Peggy Scott

Deputy Administrator
 of Services
 Lori Harder

Waiver
 Manager
 Pam Hovis

QI/Cert/
 Contract
 Compliance
 Jeremy
 Youngs

Technical
 Assistance
 Manager
 Kim
 Johnson

SCA - CSA
 Kay Rehtus

- SC Supervisors
 - SCs

SCA - SESA
 Teresa Tack
 Stogdill, Acting

- SC Supervisors
 - SCs

DOJ Transition Manager
 Angie Ludeman
 Acting

Disability
 Services
 Specialists
 (10)

QI/Cert/
 Contract
 Compliance
 Specialists

DD
 Technical
 Assistance
 Specialists

SCA - WSA
 Pam Mann

- SC Supervisors
 - SCs

SCA - NESA
 Cindy Brinker

- SC Supervisors
 - SCs

SC
 Support

SC
 Support

Contract
 Coordinator
 Jodie
 Gibson

Staff Assistant
 Kate Mathias

Psychologists

Team
 Behavioral
 Consultation

NF
 Program
 Coordinator

SCs
 (13 FTE)

3/2011

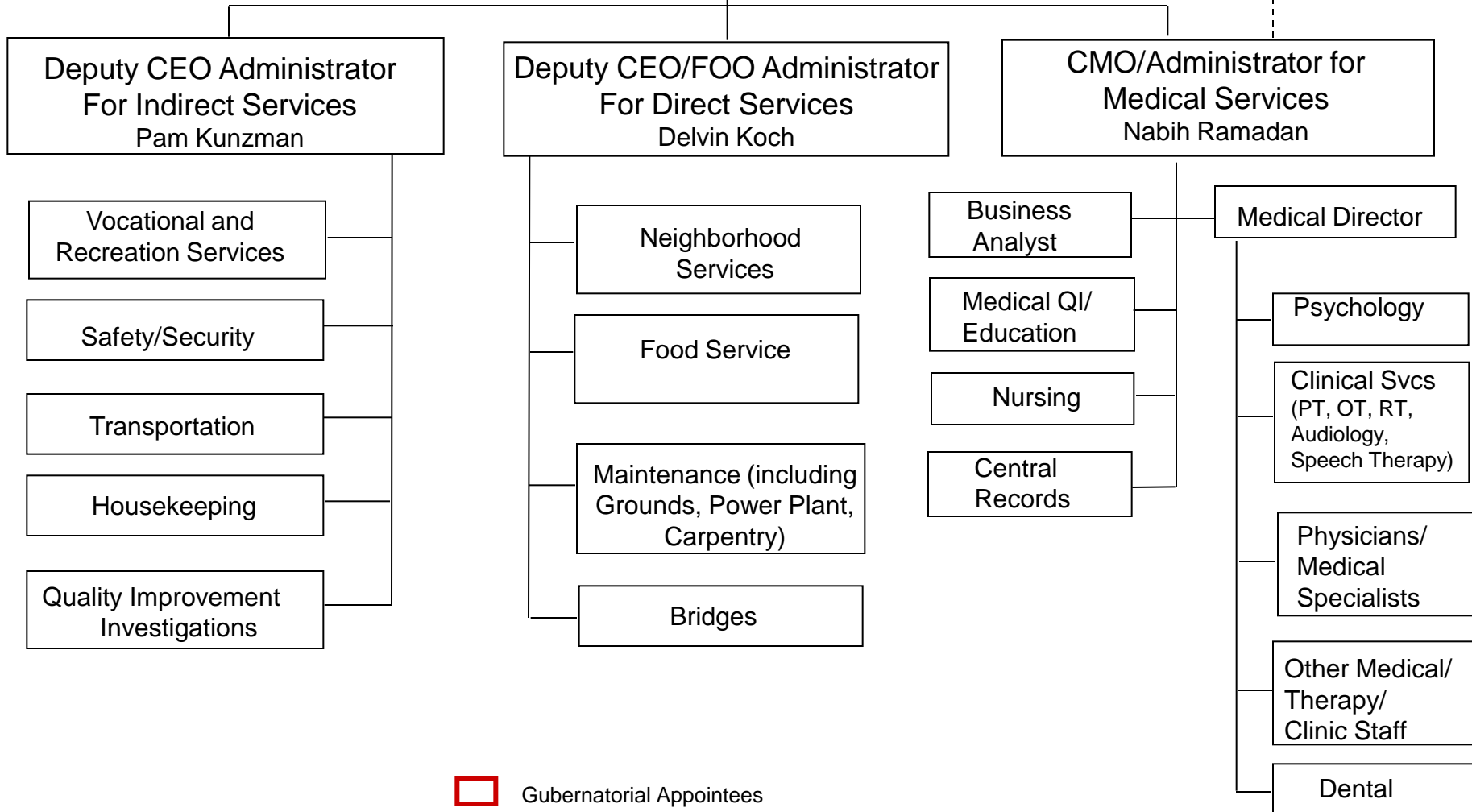
Gubernatorial Appointees
 Director Appointees



Division of Developmental Disabilities

Jodi Fenner, Director

Beatrice State Developmental Center

Dan Howell, CEO



 Gubernatorial Appointees
 Director Appointees