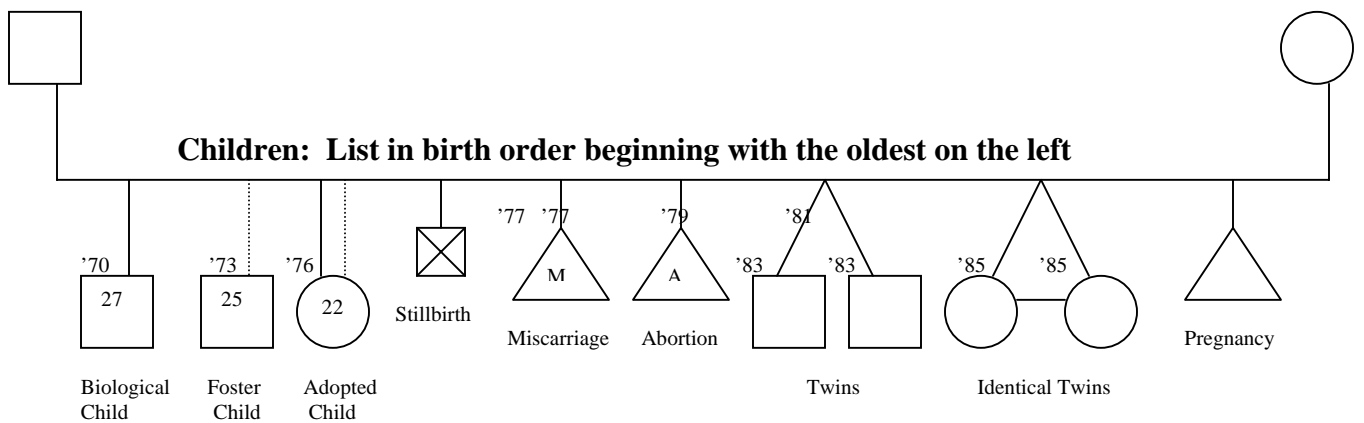
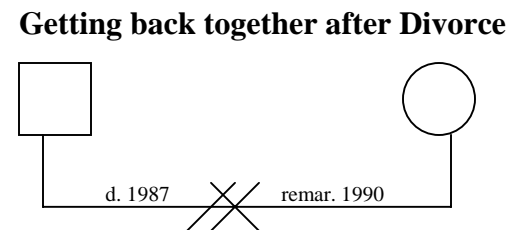
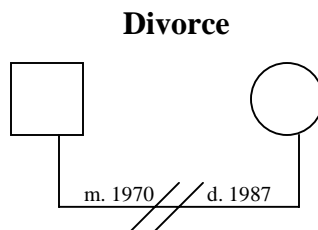
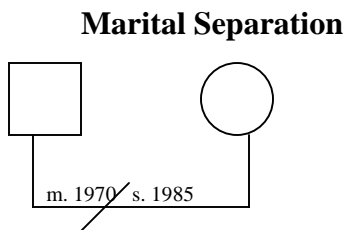
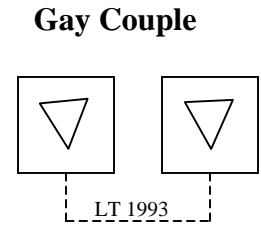
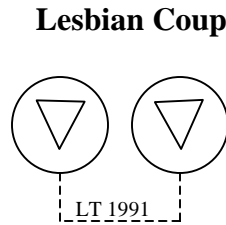
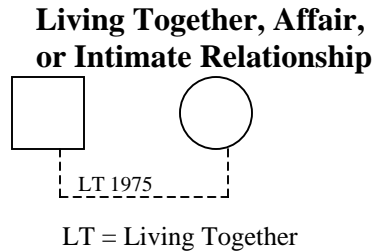
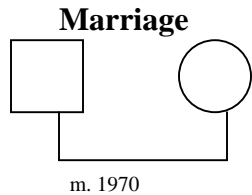
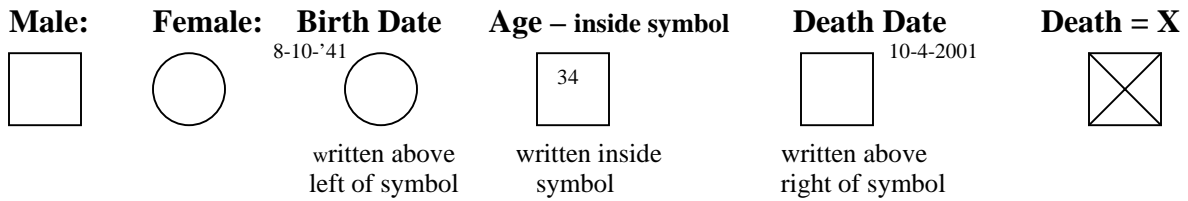
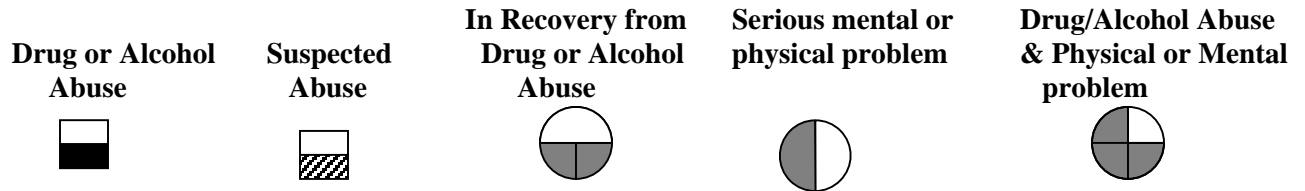


# The Basic Genogram Symbols



- Two people who are married are connected by lines that go down and across, with the husband on the left and the wife on the right.
- Couples that are not married are depicted with a dotted line.
- Children are drawn left to right, going from the oldest to the youngest.

## Symbols Denoting Drug, Alcohol, and/or Mental Problems



## Symbols Denoting Interactional Patterns between People

