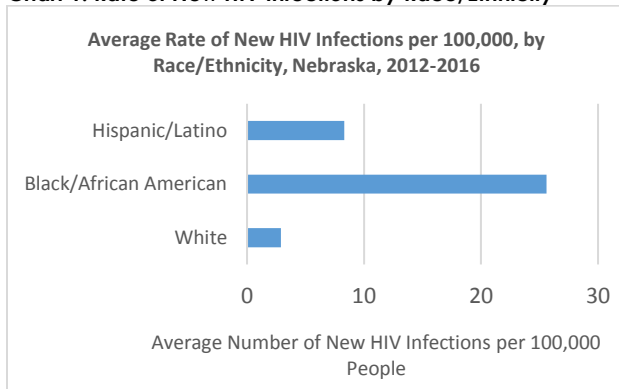


# 2016 Nebraska Fact Sheet: HIV among Hispanics

HIV infection has had a substantial impact on the Hispanic/Latino\* population in Nebraska. About 10% of the Nebraska population identifies themselves as Hispanic/Latino. Hispanics/Latinos have twice the rate of HIV as white non-Hispanics (Chart 1) in Nebraska. According to CDC a few of the prevention challenges are avoidance of seeking testing, counseling, or treatment if infected for fear of discrimination, stigmatization or immigration status. Traditional gender roles and the stigma around homosexuality may add to prevention challenges<sup>‡</sup>.

**Chart 1: Rate of New HIV Infections by Race/Ethnicity**



## New HIV Cases\*\*

Statewide about 12 Hispanics are newly diagnosed with HIV each year. More than 90% of Hispanics newly diagnosed with HIV are male. The ratio of male to female cases has remained fairly stable over time (Table 1).

\*The term "Hispanic" refers to people themselves as either Hispanic or Latino

\*\*The term "new HIV case" refers to all new diagnosis of HIV infection with or without AIDS

‡ Centers for Disease Control and Prevention. <http://www.cdc.gov/hiv/group/racialethnic/hispaniclatinos/index.html> Accessed May 20, 2016.

## By Gender

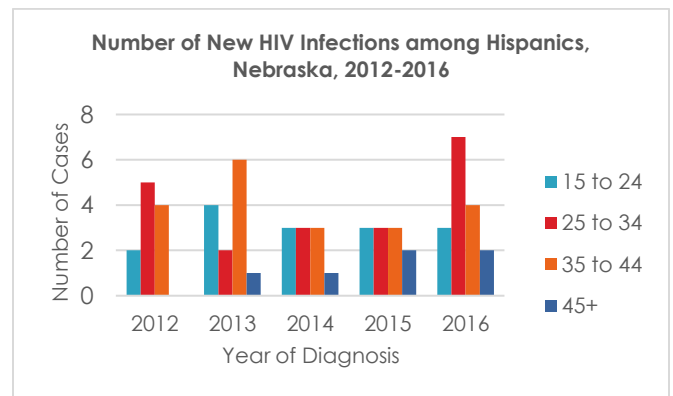
**Table 1: Number of New HIV Cases among Hispanics by Gender and Year of Diagnosis**

Year of Diagnosis	Female	Male	Total
<b>2012</b>	1	10	11
<b>2013</b>	2	12	14
<b>2014</b>	0	9	9
<b>2015</b>	1	10	11
<b>2016</b>	2	14	16
<b>Total</b>	6	55	61

## By Age

Approximately two-thirds (66%) of new HIV cases among Hispanics are diagnosed between the ages of 25 and 45 (Chart 2). Regardless of age, Hispanic adults who are having unprotected sex should get tested for HIV.

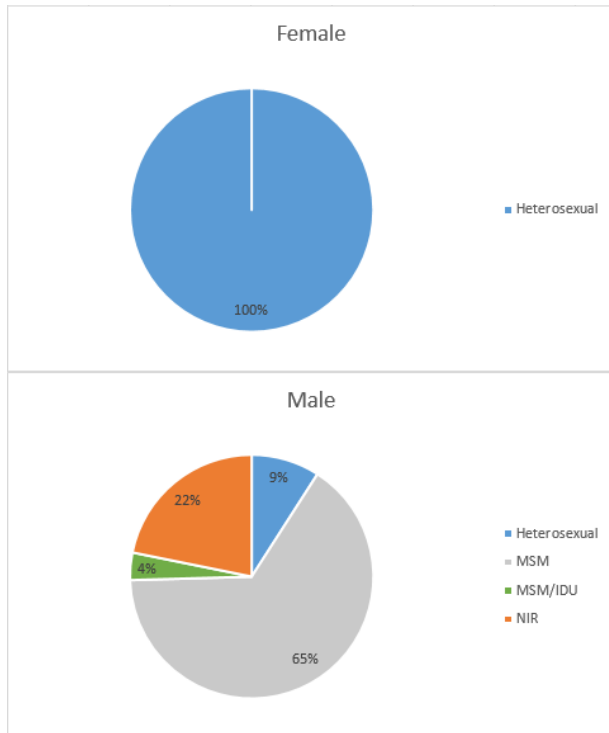
**Chart 2: Number of New HIV Infections among Hispanics, Nebraska, 2012-2016**



## By HIV Exposure Category

In Nebraska about half of Hispanic men reported newly diagnosed with HIV reported male-to-male sexual contact (Chart 3). All of the Hispanic women with newly diagnosed with HIV reported heterosexual contact.

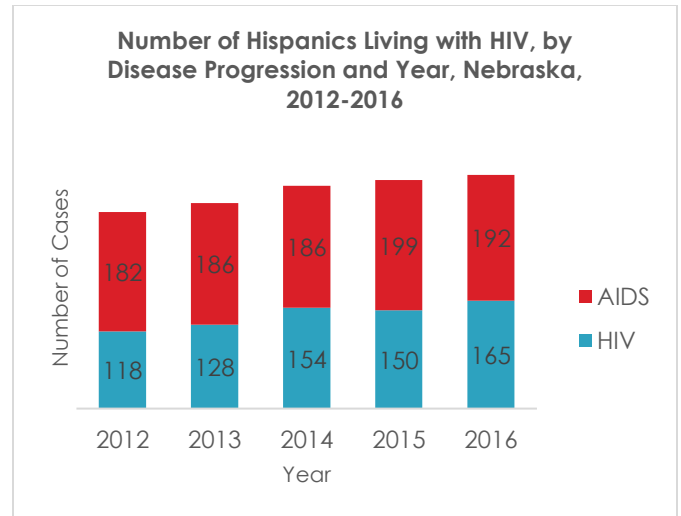
**Chart 3:**  
Percent of New HIV Cases Among Hispanics by Exposure Category and Gender, Nebraska, 2012-2016



\*\* NIR: People who do not have a risk identified. Every effort is made at the time of diagnosis to get a risk through interviews.

## Living HIV Cases

As of December 31, 2016, there were 357 Hispanics living with HIV in Nebraska. The number of Hispanics living with HIV increases about 3% each year. The proportion of people living with HIV and those living with AIDS has remained fairly constant the last five years.



## Testing in Nebraska

HIV testing in Nebraska is available at all physician offices, hospitals, medical clinics and counseling and testing sites. The Nebraska Department of Health and Human Services (NDHHS) Counseling and Testing Program has 65 federally funded HIV test sites located across Nebraska. At these test sites, the client has the option of testing anonymously (by number) or confidentially (by name). Testing at any other site is confidential only. To locate a counseling and testing site near you go to: <http://dhhs.ne.gov/publichealth/Documents/CTRPCRsites.pdf>.