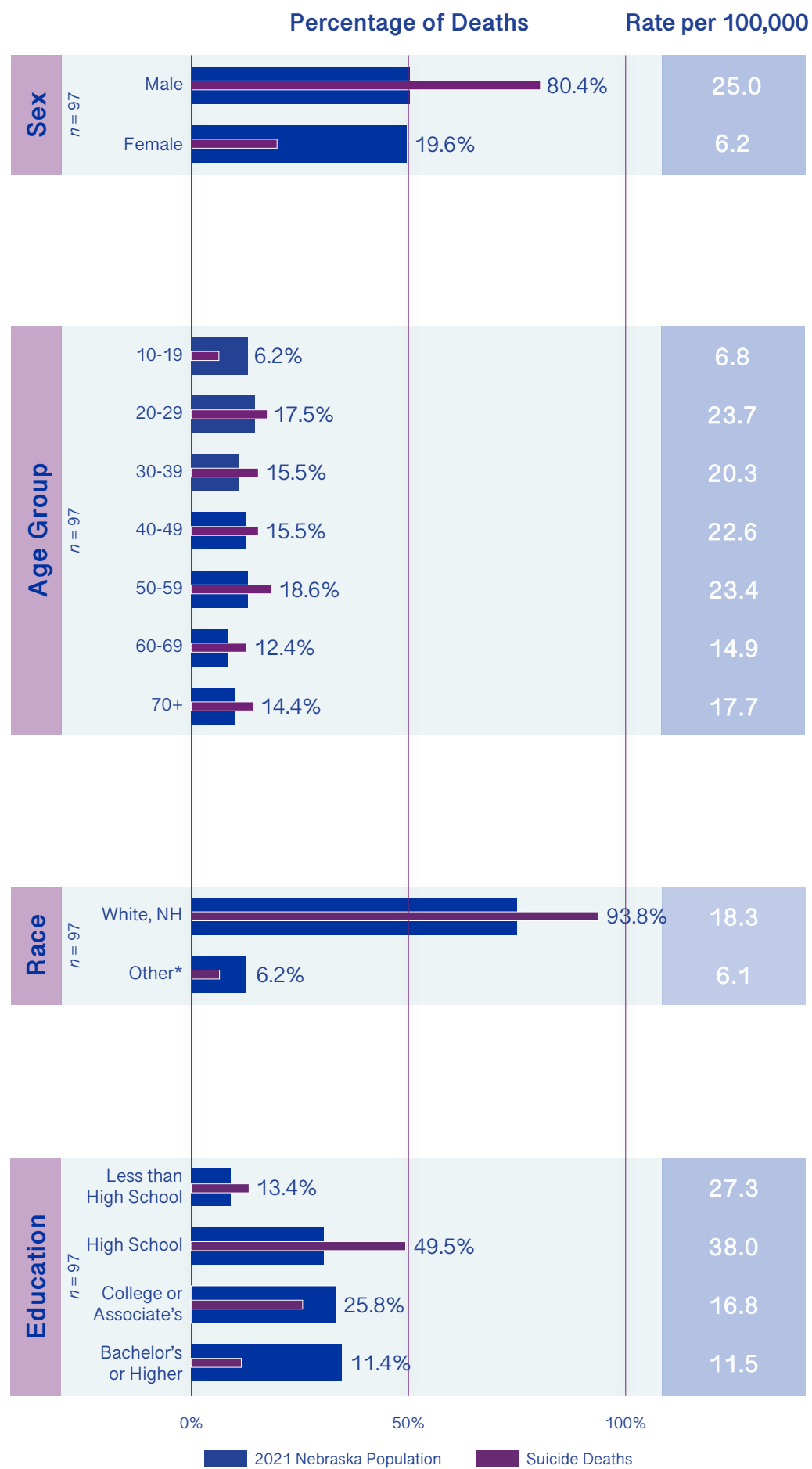


Summary of Suicide Deaths in Nebraska Behavioral Health Region 1, 2, 3 and 4

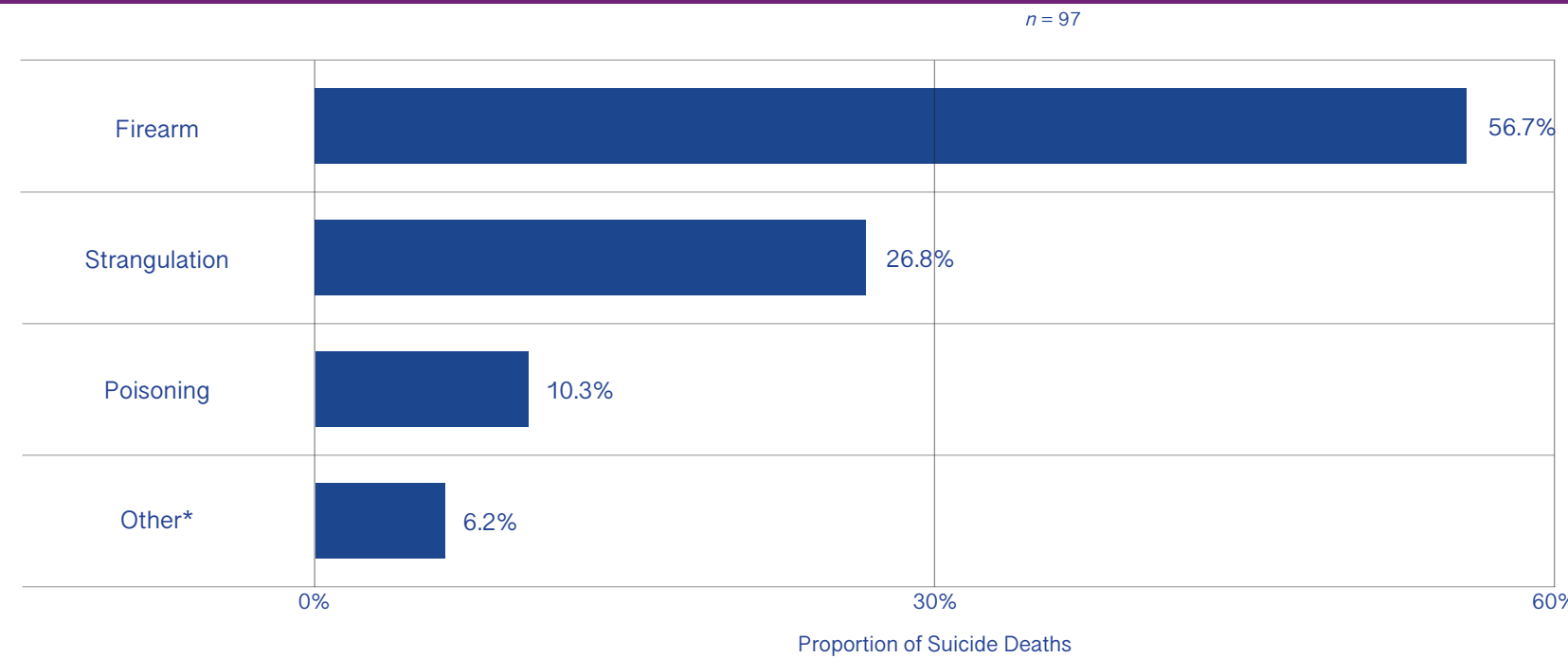
97 Total Deaths (15.7 per 100,000 Population)

Demographic Information



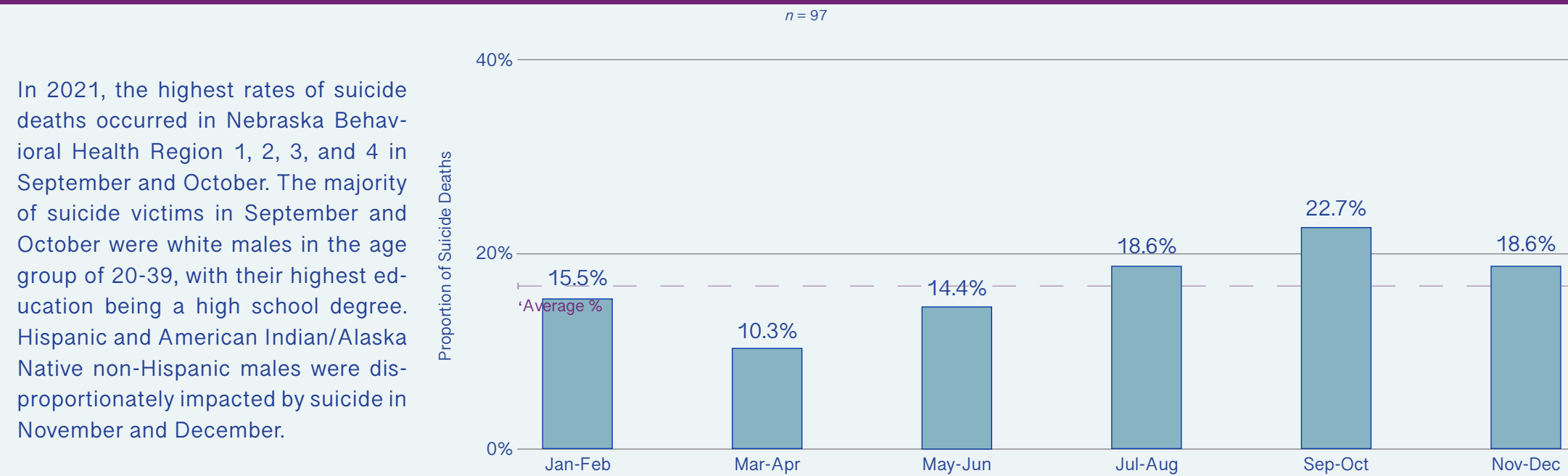
In 2021, white males with a high school education between the ages 20-29 and 50-59 most frequently died from suicide. Hispanic and American Indian/Alaska Native, non-Hispanic were disproportionately impacted by suicide in Region 1, 2, 3, and 4.

Cause of Death



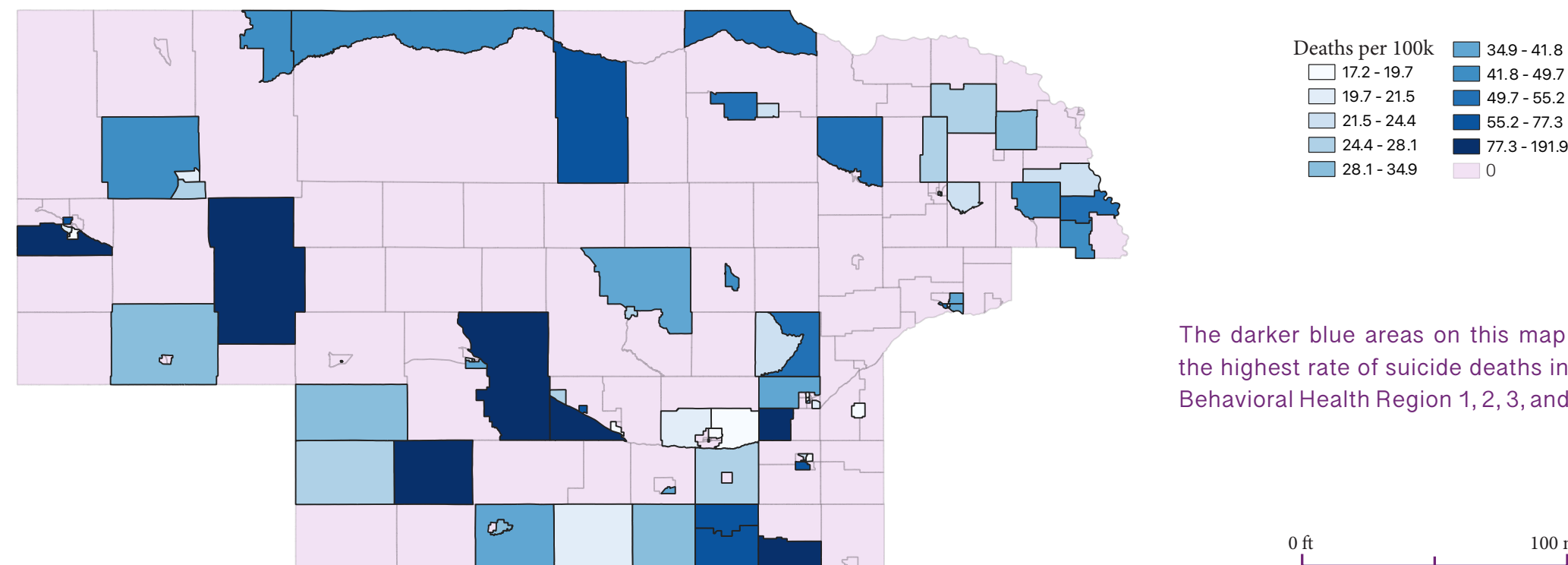
Among those who died by suicide in 2021 in Nebraska Behavioral Health Region 1, 2, 3, and 4, males were most likely to use firearms or strangulation and females were most likely to use poisoning (including drug overdose).

Suicide Deaths by Month

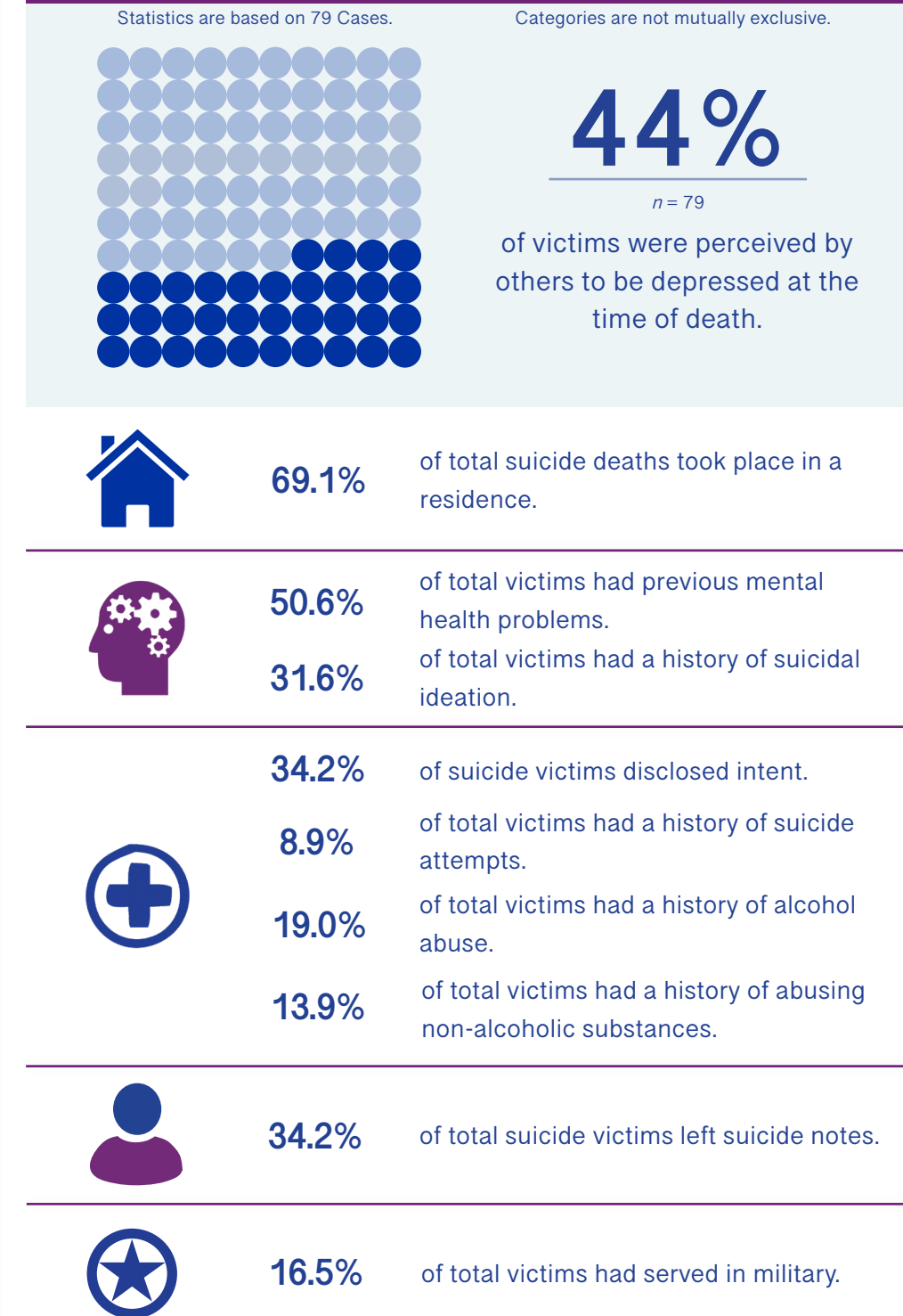


In 2021, the highest rates of suicide deaths occurred in Nebraska Behavioral Health Region 1, 2, 3, and 4 in September and October. The majority of suicide victims in September and October were white males in the age group of 20-39, with their highest education being a high school degree. Hispanic and American Indian/Alaska Native non-Hispanic males were disproportionately impacted by suicide in November and December.

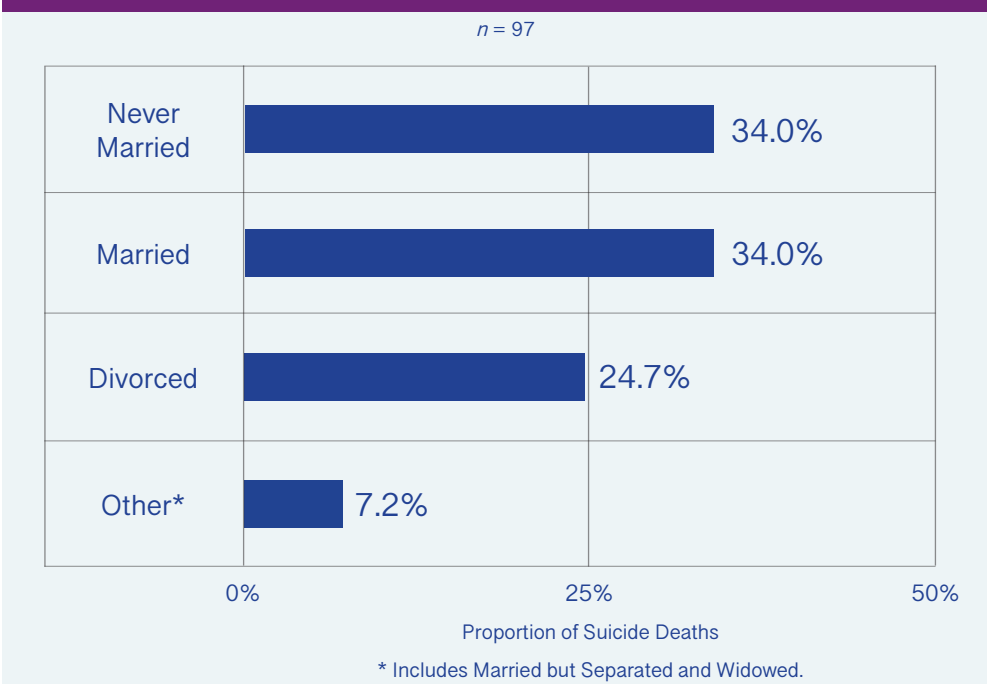
Suicide Death Rate by Census Tracts



Other Decedent Characteristics



Marital Status



In 2021, never married males were at the highest risk in Regions 1 to 4.