

MMRC Review Process



The following process shows how Nebraska conducts Maternal Mortality Reviews.

1



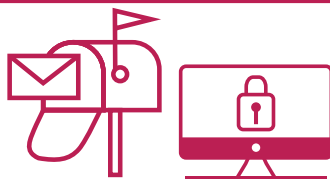
Case Identification

Cases are identified using 1) the pregnancy checkbox on the death certificate, 2) by linking the decedent's name on the death certificate to maternal name on birth certificates within one year of death, and 3) by linking the decedent's name on the death certificate to maternal name on fetal death certificates within one year of death.

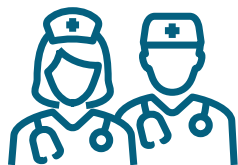
2

Record Request

Prenatal care, hospital, police, and autopsy records are requested for all potential cases, where appropriate.



3



Case Abstraction

All records received are summarized by a nurse abstractor to describe the case to the MMRC.

4

MMRC Conducts Standardized Review

The committee seeks to answer six core questions

1. Was the death pregnancy-related?
2. What was the cause of death?
3. Was the death preventable?
4. What were the critical contributing factors to the death?
5. What are the recommendations and actions that address those contributing factors?
6. What is the anticipated impact of those actions if implemented?



5



Action on Recommendations

Finally, data compiled and recommendations made by the MMRC are shared with partners working on reducing maternal morbidity and mortality in order to help guide future work.