

# WIC HELPS CONNECT FAMILIES

## TO CARE BEYOND WIC

Are you or someone in your family using:

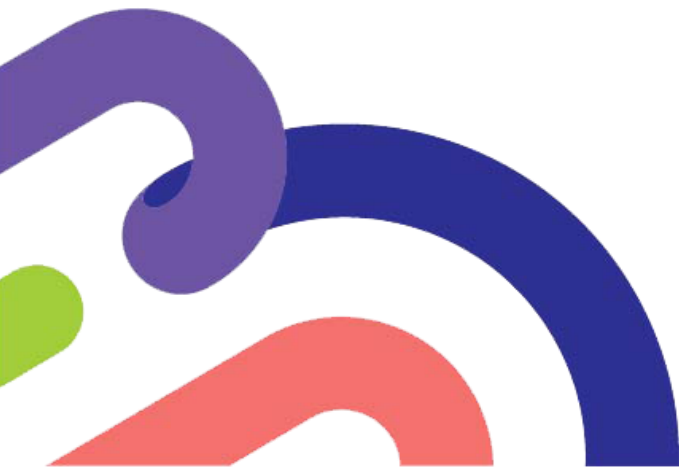
- Medicaid
- Supplemental Nutrition Assistance Program (SNAP)
- Aid to Dependent Children (ADC/TANF)
- Early Development Network
- Nutrition Education Program (NEP)
- Head Start
- Healthy Families
- Family Planning



Depending on your WIC office, these three programs may be available within the same organization:

- Immunization Clinic
- Dental Program
- Public Health Nurse

IF YOU ARE NOT USING ONE OF THESE PROGRAMS BUT ARE INTERESTED, LET US KNOW AND WE WILL POINT YOU IN THE RIGHT DIRECTION!



## Other Programs

Below are other programs that may provide helpful resources for you and your family to look in to:

**Medicaid:** Medicaid is a resource that can help with some medical expenses. Learn more and apply at [accessnebraska.ne.gov](https://accessnebraska.ne.gov).

**SNAP:** The Supplemental Nutrition Assistance Program helps individuals and families buy food. Learn more and apply at [accessnebraska.ne.gov](https://accessnebraska.ne.gov).

**ADC/TANF:** Aid to Dependent Children (ADC) provides cash assistance to low income families with children. ADC is funded by the Temporary Assistance for Needy Families (TANF) program. Learn more and apply at [accessnebraska.ne.gov](https://accessnebraska.ne.gov).

**Early Development Network:** Provides early intervention services for families with children birth to age three with developmental delays and/or health care needs and connects families to needed services. Learn more by visiting [edn.ne.gov](https://edn.ne.gov)

**Nutrition Education Program (NEP):** Helps families on a limited budget make healthier food choices and choose physically active lifestyles by acquiring the knowledge, skills, attitudes, and behavior changes necessary to improve their health. Learn more by visiting [food.unl.edu/nutrition-education-program-nep](https://food.unl.edu/nutrition-education-program-nep)

**Head Start:** Offers center-based services, home based services, and family child care services to children birth to age 5. They promote school readiness for children by offering education and comprehensive services. Learn more about Head Start in your community by viewing this [brochure](#).

**Healthy Families:** Helps to promote child well-being and prevent the abuse and neglect of our nation's children by delivering home visiting services that empower families and communities. Learn more and find a site near you by visiting [healthyfamiliesamerica.org](https://healthyfamiliesamerica.org)

**Family Planning:** Works to provide access to reproductive health care services and education while recognizing that family planning is a basic human right that is essential for the well-being of all individuals. Learn more and find a clinic near you at [nefamilyplanning.org](https://nefamilyplanning.org)

**Immunization Clinic, Dental Program, Public Health Nurse** could be indicated if your local agency specifically offers one of these programs.