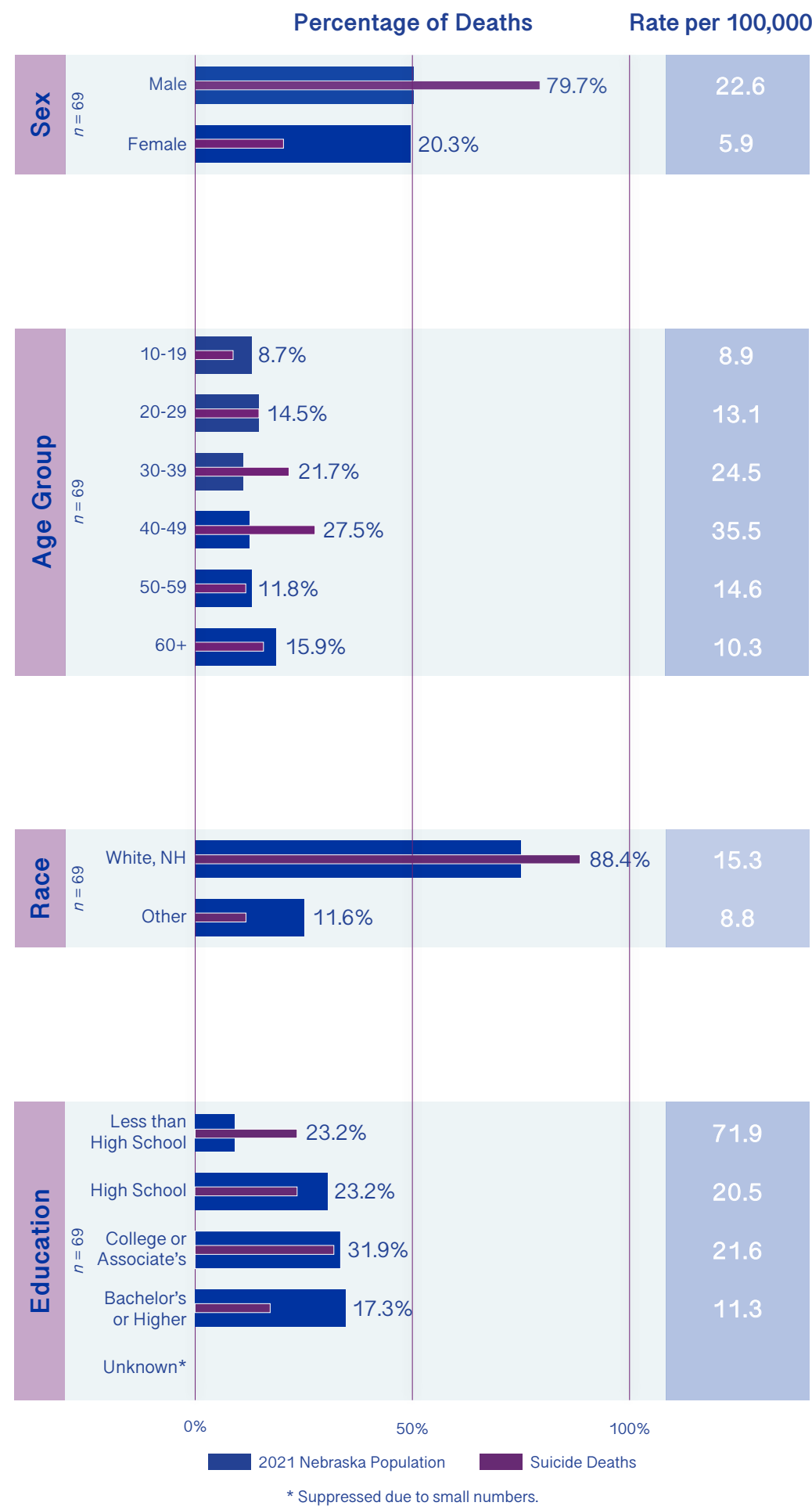


Summary of Suicide Deaths in Nebraska Behavioral Health Region 5

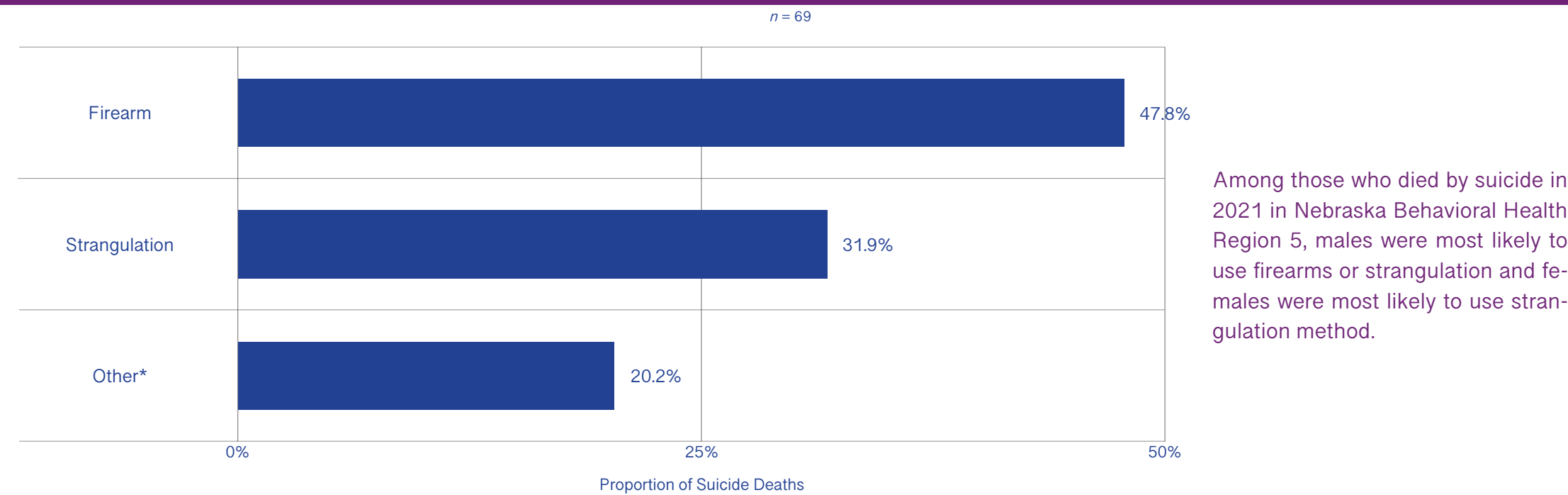
69 Total Deaths (14.4 per 100,000 Population)

Demographic Information

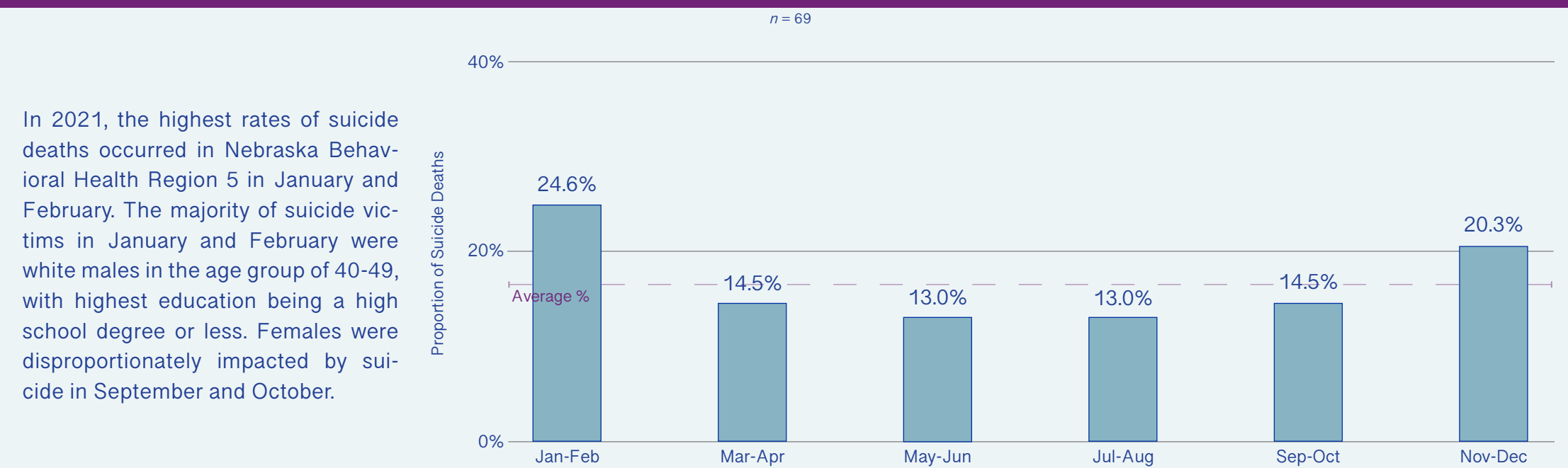


In 2021, white males with some college credits or Associate's degree between the ages 40-49 most frequently died from suicide. White and Hispanic males with less than High School education were disproportionately impacted by suicide in Region 5.

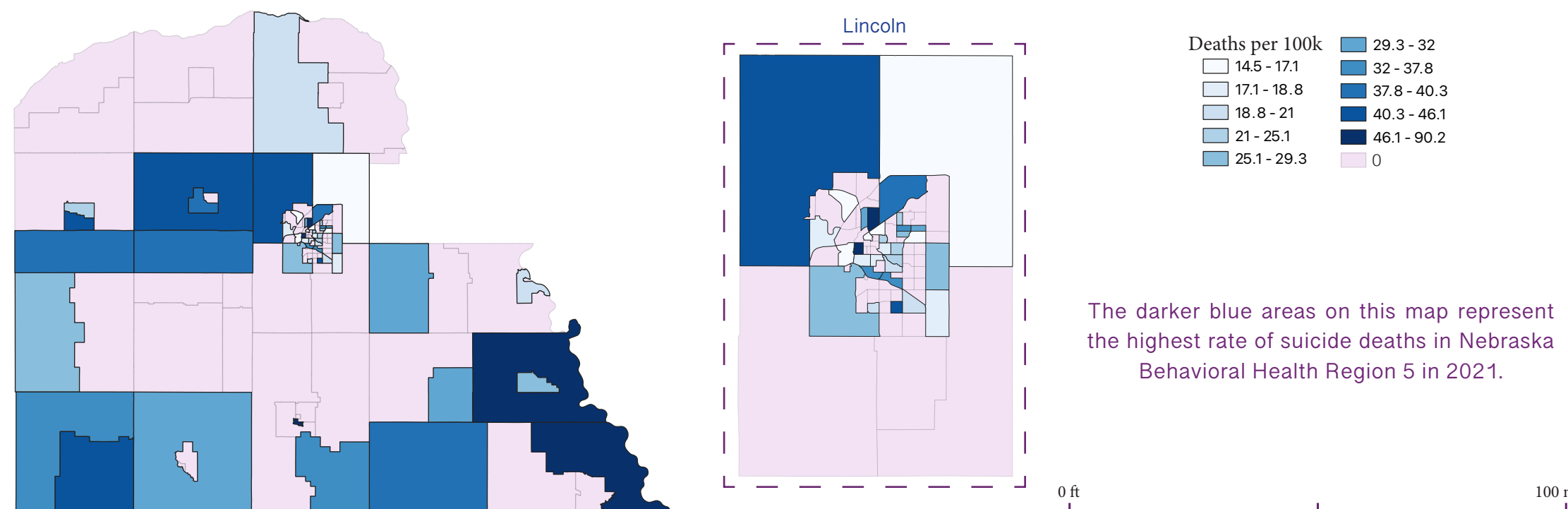
Cause of Death



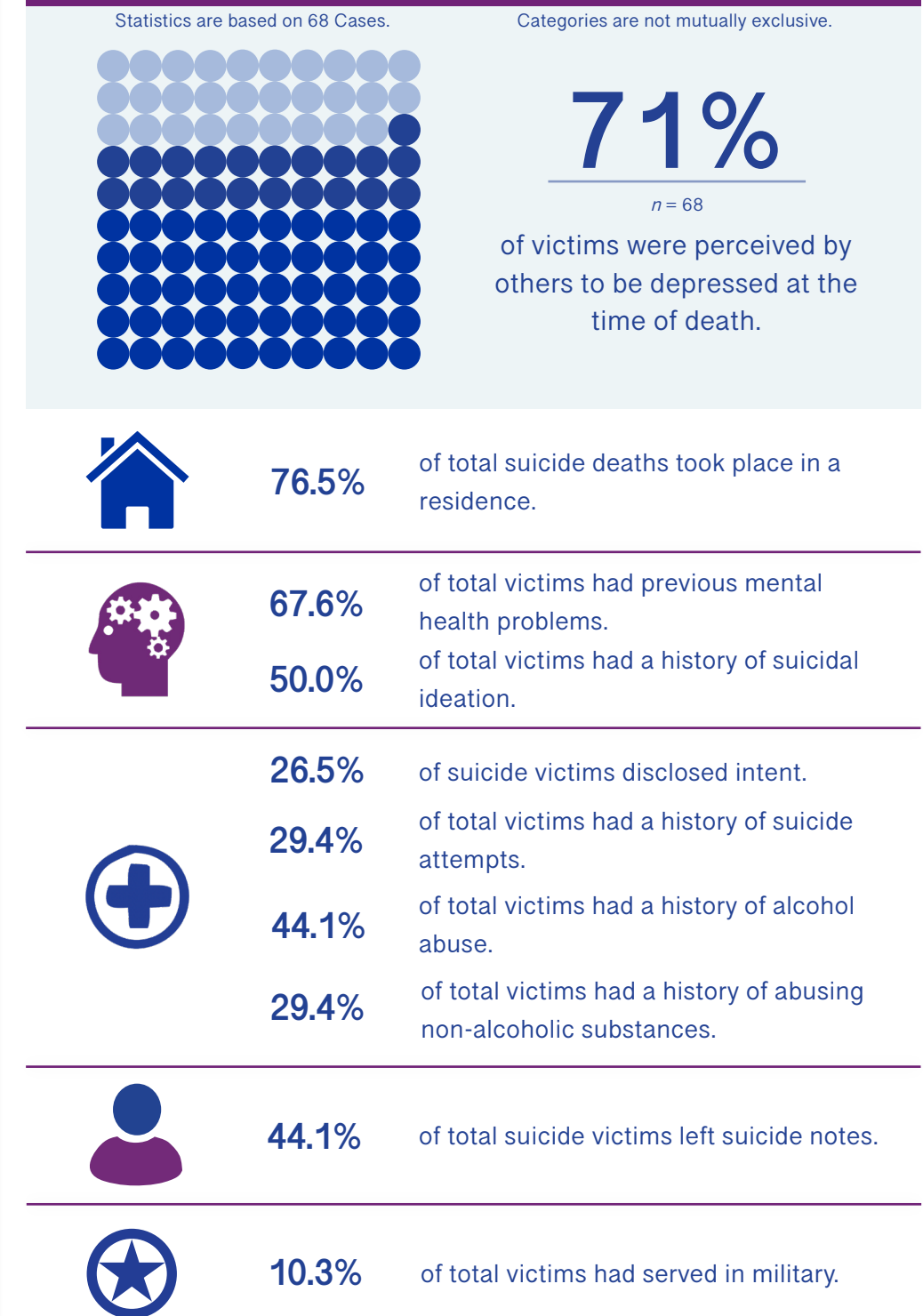
Suicide Deaths by Month



Suicide Death Rate by Census Tracts



Other Decedent Characteristics



Marital Status

