

# RESEARCH-TESTED INTERVENTION PROGRAMS (RTIPS)

How to Navigate the Site

- ▶ Research-Tested Intervention Programs (RTIPs) is sponsored by the National Cancer Institute (NCI).
- ▶ RTIPs is a searchable database of evidence-based cancer control programs that provides program planners and public health practitioners easy and immediate access to:
  - ▶ programs tested in a research study;
  - ▶ publication(s) of the study findings; and,
  - ▶ program products or materials used with a particular study population in a specific setting.
    - ▶ Given that the programs on this site are based on evidence derived research studies, they may be particularly effective in serving the populations and communities in the settings in which they were originally tested.

National Cancer Institute


## Research-tested Intervention Programs (RTIPs) <http://rtips.cancer.gov/rtips/>

■ RTIPs – Moving Science into Programs for People

Research-tested Intervention Programs (RTIPs) is a searchable database of cancer control interventions and program materials and is designed to provide program planners and public health practitioners easy and immediate access to research-tested materials. Sponsored by the National Cancer Institute (NCI), the online directory provides a review of programs available for use in a community or clinical setting.

### Key Features

- Full program summaries, including 'About the Study' section, program scoring, and related publications.
- Interventions that have been reviewed by an expert panel and associated program materials that are available at no cost on CD-ROM or through dissemination by the developer.
- *Putting Public Health Evidence in Action*: This online interactive training curriculum developed by the Cancer Prevention and Control Research Network (CPCRN) supports community program planners and health educators in developing skills in using evidence-based approaches.
- Links to the *Guide to Community Preventive Services* that provide recommendations for intervention approaches that promote population health.



### Criteria for Inclusion

- Intervention outcome finding(s) must be published in a peer-reviewed journal.
- The study must have produced one or more positive behavioral and/or psychosocial outcomes ( $p \leq .05$ ) among individuals, communities, or populations.
- Evidence of these outcomes has been demonstrated in at least one study using an experimental or quasi-experimental design. Experimental designs require random assignment, a control or comparison group, and pre- and post-intervention assessments. Quasi-experimental designs do not require random assignment, but do require a comparison or control group and pre- and post-intervention assessments. Studies that are based on single-group, pre-/post-test designs do not meet this requirement.
- The intervention must have messages, materials, and/or other components that include English and can be disseminated in a U.S. community or clinical setting.
- The intervention has been conducted within the past 10 years.

### Featured Program Areas

- Breast Cancer Screening
- Cervical Cancer Screening
- Colorectal Cancer Screening
- Diet/Nutrition
- HPV Vaccination
- Informed Decision Making
- Obesity
- Physical Activity
- Sun Safety
- Public Health Genomics
- Survivorship/Supportive Care
- Tobacco Control


### Program Review Process

James Bell Associates, Inc. is responsible for coordinating the review of programs submitted to RTIPs and assigning the research products and publications from each intervention to a panel of experts in the field for peer review. Interventions are scored on the following criteria: research integrity, intervention impact, and dissemination capability, as well as reach, effectiveness, adoption, and implementation (RE-AIM). Once reviewed, programs are posted on the RTIPs website, and associated materials are made available for use.

RTIPs is a component of the Web portal, Cancer Control P.L.A.N.E.T. (Plan, Link, Act, Network with Evidence-based Tools). For more information about Cancer Control P.L.A.N.E.T., please visit <http://cancercontrolplanet.cancer.gov>.

U.S. DEPARTMENT OF HEALTH AND HUMAN SERVICES  
National Institutes of Health

NATIONAL CANCER INSTITUTE



NH Publication No. 12-7617 Printed 2016

# ABOUT THE COMMUNITY GUIDE

- ▶ Topics featured on the website include: tobacco control, physical activity, sun safety, breast, cervical and colorectal cancer screening, informed decision making for cancer screening, diet/nutrition, obesity, survivorship/supportive care, public health genomics, and HPV vaccination.
- ▶ To be featured on the website, each evidence-based program must have been:
  - ▶ published in a peer-reviewed journal;
  - ▶ produced one or more positive behavioral and/or psychosocial outcomes ( $p \leq .05$ ) among individuals, communities, or populations;
  - ▶ evidence of outcomes must be demonstrated in at least one research study, using an experimental or quasi-experimental design;
  - ▶ all evidence-based programs make available the products or materials that include English that were used in the research study for the larger cancer control community (unless otherwise copyrighted by the program developer); and
  - ▶ the research study had been conducted within the last 10 years.

## ABOUT THE COMMUNITY GUIDE

- ▶ Some evidence-based programs on the RTIPs website may be designated as model programs by other Cancer Control P.L.A.N.E.T. partners (e.g. CDC). RTIPs provides this information to the user and a link to that agency's website so that the user can determine the exact meaning of such a designation.
- ▶ The site provides a consumer-reports-like list of evidence-based programs that have been reviewed by a panel of topic experts in the field. Programs are rated on 3 criteria which include the following:
  - ▶ research integrity
  - ▶ intervention impact, and,
  - ▶ dissemination capability.
- ▶ RTIPs-listed programs have been shown to be effective in the populations and settings in which they were studied. It is more likely to ensure success from the adoption and/or adaptation of an evidence-based program, which has been systematically tested in the field, than to create a new program for the same population delivered in the same setting.

## ABOUT THE COMMUNITY GUIDE

# HTTPS://RTIPS.CANCER.GOV/RTIPS/INDEX.DO

Help us improve RTIPs and other cancer control resources on Cancer Control P.L.A.N.E.T. [Take Our Survey](#)

**NIH NATIONAL CANCER INSTITUTE**

## Research-Tested Intervention Programs (RTIPs)

Home Search for Programs Submit a Program Topic Areas Tools and Resources About

### Moving from Research to Programs for People

**Search from 188 Evidence-Based Intervention Programs**

RTIPs is a searchable database of evidence-based cancer control interventions and program materials and is designed to provide program planners and public health practitioners easy and immediate access to research-tested materials.

[SEARCH CURRENT PROGRAMS](#)

#### New programs on RTIPs

**Cervical Cancer Screening**  
The Gateway to Health: A Cervical Cancer Screening Program for Korean Women  
Post date: February, 2018

**HPV Vaccination**  
Making Effective HPV Vaccine Recommendations  
Post date: December, 2017

New evidence-based programs are released periodically. Please check for updates.

#### News and Announcements

[RTIPs Highlighted at University of Kentucky](#)

#### Program Submission

We are interested in continuing to add to the current listing of the evidence-based programs on the RTIPs website and appreciate your consideration of submitting your program.

For more information on evidence-based program submission, read the [RTIPs Submission and Review Process: A Guide for Program Developers](#)

[SUBMIT A PROGRAM](#)


#### Research to Reality

[Search Research to Reality \(R2R\)](#), NCI's online community of practice that links cancer control practitioners and researchers, for collaboration, cyber-seminars, and discussions. Users can connect with researchers about their RTIPs interventions on R2R.

[LEARN MORE](#)


#### RTIPs Connects with Research Reviews

The [Guide to Community Preventive Services](#) (the Community Guide) provides guidance on the effectiveness of types of interventions, which may include interventions found on RTIPs. [Systematic reviews](#) are conducted by the [Task Force](#) on Community Preventive Services who uses the findings as the basis for their recommendations for



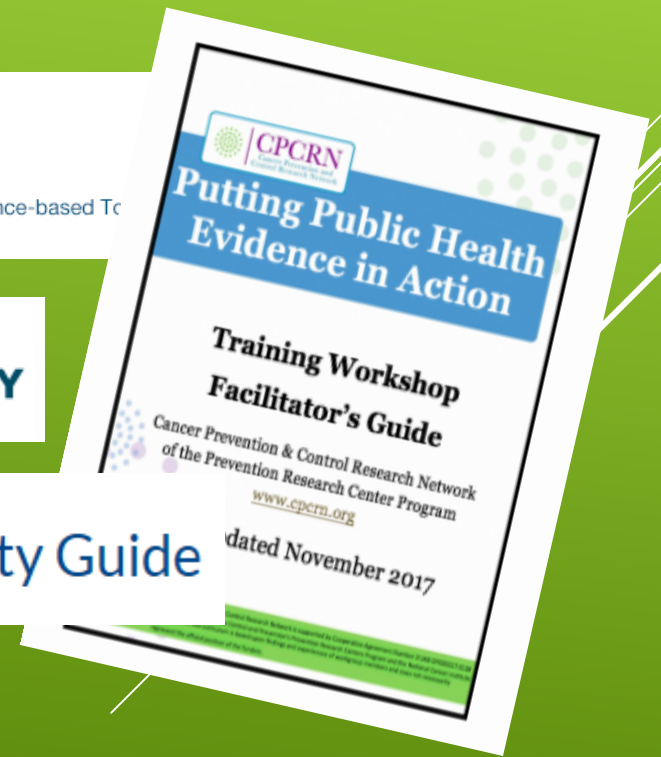
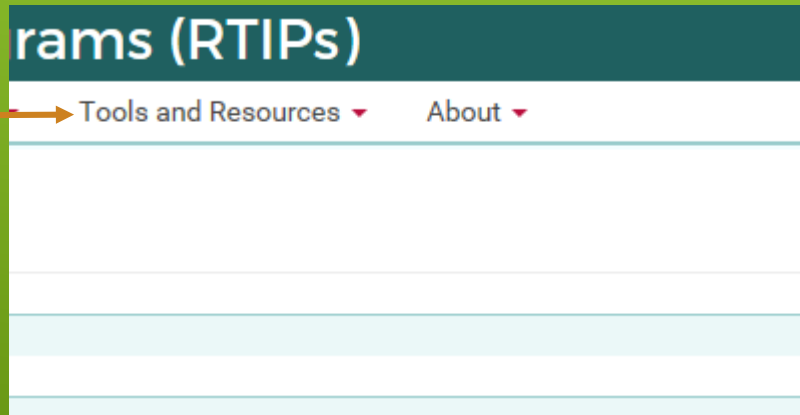
#### Resource for Adaptation and Implementation

[Putting Public Health Evidence in Action](#): The Cancer Prevention and Control Research Network (CPCRN) has created an interactive training curriculum to support community program planners and health educators in developing skills in using evidence-based approaches.



When no evidence-based programs are available to meet your comprehensive cancer control needs (in terms of populations or settings), then creating a new program may be the best solution. However, in creating the new program, it would be wise to consider:

- ▶ Reviewing the available evidence of similar intervention approaches summarized on Cancer Control P.L.A.N.E.T, Research to Reality, The Community Guide, or the Putting Public Health Into Action resources. These resources can be found by selecting them from the drop down once you select Tools and Resources.



# ABOUT THE COMMUNITY GUIDE

## Search for Programs

- ▶ Once you select “Search for Programs” you may select:
  - ▶ Topics, Age, Setting, Race/Ethnicity, Materials, Origination, and Gender
  - ▶ Once you select your focus area be sure to click on “Search”.
  - ▶ A listing of available researched programs will be made available to you.

Researcher Requested Intervention Programs (RTIPs)

Search for Programs • Submit a Program • Topic Areas • Tools and Resources • About

Select program attributes (if you like) and then click the button at the bottom of the page to get a list of relevant programs.

Multiple selections within a category expand your criteria, selections in different categories narrow them.

**Topics**

- Breast Cancer Screening
- Cervical Cancer Screening
- Colorectal Cancer Screening
- Diet/Nutrition
- HPV Vaccination
- Informed Decision Making
- Obesity
- Physical Activity
- Prostate Cancer Screening
- Public Health Genomics
- Sun Safety
- Survivorship/Supportive Care
- Tobacco Control

**Age**

- Children (0-10 years)
- Adolescents (11-18 years)
- Young Adults (19-39 years)
- Adults (40-65 years)
- Older Adults (65+ years)

**Setting**

- Community
- Religious establishments
- Rural
- Suburban
- Urban/Inner City
- School based
- Clinical
- Workplace
- Home-based
- Day care / Preschool

**Race/Ethnicity**

(of [Any %] of the study population)

- Alaskan Native
- American Indian
- Asian
- Black, not of Hispanic or Latino origin
- Hispanic or Latino
- Pacific Islander
- White, not of Hispanic or Latino origin

**Materials**

- Available on RTIPs
- Partially available on RTIPs
- Available from third party only

**Origination**

- Australia
- Canada
- United Kingdom
- United States

**Gender**

- Male
- Female

Search

Note:  
\* Not selection you search criteria will return all RTIPs

# HOW TO NAVIGATE THE SITE

Once you click on “Search”:

- ▶ A listing of available researched programs will be made available to you

**Intervention Programs**

**Search Criteria Used:** Adults (40-65 years), Available on RTIPs, Black, not of Hispanic or Latino origin, Breast Cancer Screening, Cervical Cancer Screening, Clinical, Colorectal Cancer Screening, Diet/Nutrition, Female, HPV Vaccination, Hispanic or Latino, Older Adults (65+ years)

**Refine Your Search**

Show  entries Search Table:

<b>Program Title &amp; Description</b> (15 programs)	<b>Program Focus</b>	<b>Population Focus</b>
<b>Automated Telephone Calls Improve Completion of Fecal Occult Blood Testing</b> Designed to increase colorectal cancer screening among adults. ( 2010 ) NCI (Grant number: R01CA132709) <b>Criteria Matched:</b> Adults (40-65 years), Available on RTIPs, Black, not of Hispanic or Latino origin, Clinical, Colorectal Cancer Screening, Female, Hispanic or Latino, Older Adults (65+ years)	Awareness building and Behavior Modification	Adults
<b>Breast Health Education Among Hispanic Elderly Women</b> Designed to promote mammography screening by increasing awareness of breast cancer and addressing barriers to obtaining a mammogram. ( 2002 ) NCI (Grant number: R01CA132709)	Awareness building, Behavior Modification and Motivation	Un- and/or Underscreened Individuals

HOW TO NAVIGATE THE SITE



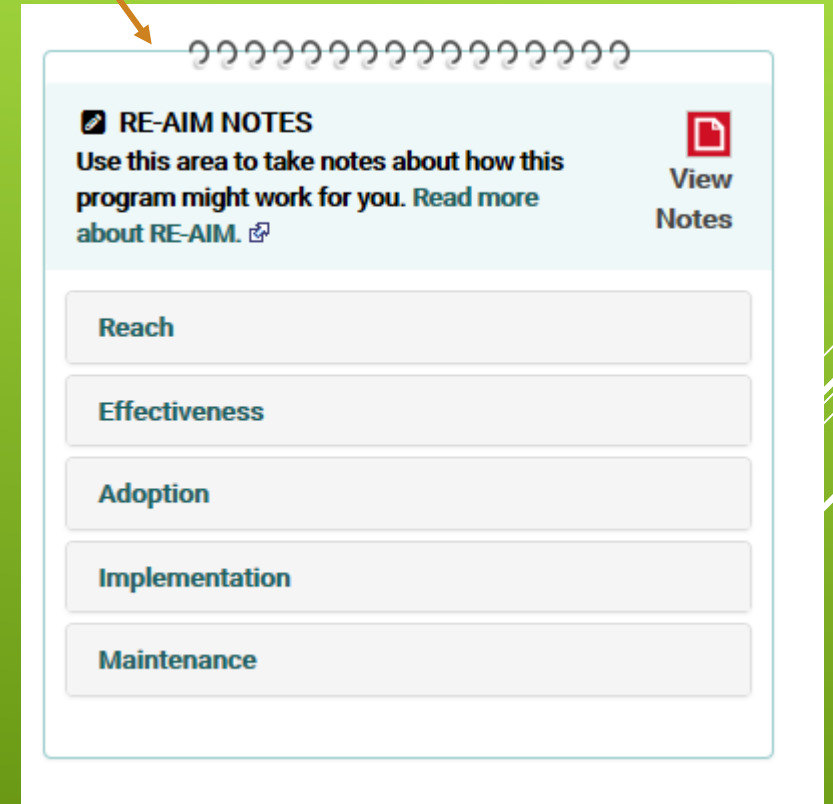
Select the program that you'd like to research.

- ▶ Once that program opens, there will be necessary information located in the left navigation that will tell you:
  - ▶ Time Required, Suitable Settings, Required Resources, Key Findings, Implementation Guidance, etc.
  - ▶ If there are program materials or products that were created for the program they will be made available for download

The screenshot displays the 'Research-Tested Intervention Programs (RTIPs)' website interface. The main content area shows details for a program titled 'Colorectal Cancer Screening'. The left sidebar contains a navigation menu with items such as 'The Need', 'The Program', 'Implementation Guide', 'Community Preventive Services Task Force Finding', 'Time Required', 'Intended Audience', 'Suitable Settings', 'Required Resources', 'About the Study', 'Key Findings', 'Publications', and 'User Reviews (0)'. The main content area includes sections for 'Race/Ethnicity', 'Setting', 'Origination', 'Funded by NCI (Grant #R01CA132709)', 'User Reviews', 'Products', 'Browse', 'The Need', and 'The Program'. The 'Products' section shows a preview of a document. The 'Browse' section shows a link to 'Browse more programs on Colorectal Cancer Screening'. The 'The Need' section provides background information on colorectal cancer. The 'The Program' section is partially visible. On the right side, there is a 'RE-AIM Scores' section with a progress bar showing scores for Reach (80.0%), Effectiveness (66.7%), Adoption (100.0%), and Implementation (57.1%). Below this is a 'RE-AIM NOTES' section with a 'View Notes' button.

# HOW TO NAVIGATE THE SITE

- ▶ While you do your research there's a place for you to take notes.



RE-AIM NOTES

Use this area to take notes about how this program might work for you. [Read more about RE-AIM.](#)

[View Notes](#)

Reach

Effectiveness

Adoption

Implementation

Maintenance

## HOW TO NAVIGATE THE SITE