

# interRAI Home Care Assessment System

---

Home- and Community-Based Services  
Eligibility and Enrollment Unit  
December 14, 2021

**NEBRASKA**

Good Life. Great Mission.

DEPT. OF HEALTH AND HUMAN SERVICES

*Helping People Live Better Lives.*

# Introductions

---

- ▶ **Department of Health and Human Services**
  - ▶ Tony Green
    - ▶ *Director, Division of Developmental Disabilities*
  - ▶ Tracy Robledo-Clark
    - ▶ *E&E Unit Program Manager II, Division of Developmental Disabilities*

NEBRASKA

Good Life. Great Mission.

DEPT. OF HEALTH AND HUMAN SERVICES

*Helping People Live Better Lives.*

# Introductions

---

## ▶ **Consultants**

▶ Meg Frenzen

▶ *Sr. Consultant, Optumas*

▶ Julia Kotchevar

▶ *Sr. Manager, Myers & Stauffer*

▶ Tomas Abrate

▶ *Consultant, Optumas*

**NEBRASKA**

Good Life. Great Mission.

DEPT. OF HEALTH AND HUMAN SERVICES

*Helping People Live Better Lives.*

# Agenda

---

- ▶ Timeline Overview
- ▶ interRAI Home Care Tool
- ▶ Eligibility Determination
- ▶ Eligibility and Enrollment Unit Organizational Chart
- ▶ Questions

**NEBRASKA**

Good Life. Great Mission.

DEPT. OF HEALTH AND HUMAN SERVICES

*Helping People Live Better Lives.*

# Timeline Overview

---

## ▶ Current Status

- ▶ Jan 2021 - Implemented interRAI Pediatric Home Care (PEDS-HC)
- ▶ June 2021- Updated regulations
- ▶ July 2021 - Started initial interRAI Home Care (HC) assessments

## ▶ Next Steps

- ▶ July 2022 - Complete interRAI-HC transition
- ▶ July 2023 - Determine Level of Care (LOC) for Nursing Facility (NF) placements by the E&E Unit

**NEBRASKA**

Good Life. Great Mission.

DEPT. OF HEALTH AND HUMAN SERVICES

*Helping People Live Better Lives.*

# interRAI Home Care Tool

---

- ▶ What is the interRAI-HC tool?
  - ▶ User-friendly, standardized, person-centered assessment system
  - ▶ Developed and maintained by interRAI
  - ▶ Focused on individuals' functional status and quality of life
  - ▶ Intended for use in elderly, frail, or disabled populations seeking health care services
  - ▶ Used in 25 states

NEBRASKA

Good Life. Great Mission.

DEPT. OF HEALTH AND HUMAN SERVICES

*Helping People Live Better Lives.*

# interRAIHomeCareTool

---

- ▶ Why was the interRAI-HC recommended?
  - ▶ Produces consistent and validated results
  - ▶ Supports a uniform client experience
  - ▶ Provides predictability in NF LOC determination
  - ▶ Yields more substantive data
  - ▶ Offers comparison to national datasets

NEBRASKA

Good Life. Great Mission.

DEPT. OF HEALTH AND HUMAN SERVICES

*Helping People Live Better Lives.*

# interRAIHomeCareTool

---

- ▶ What does the interRAI-HC assess?
  - ▶ Cognition
  - ▶ Communication and Vision
  - ▶ Mood and Behavior
  - ▶ Psychosocial Well-Being
  - ▶ Functional Status
  - ▶ Continence
  - ▶ Disease Diagnoses
  - ▶ Health Conditions
  - ▶ Oral and Nutritional Status
  - ▶ Skin Conditions
  - ▶ Medications
  - ▶ Treatments and Procedures
  - ▶ Social Supports
  - ▶ Environmental Assessment
  - ▶ Other

**NEBRASKA**

Good Life. Great Mission.

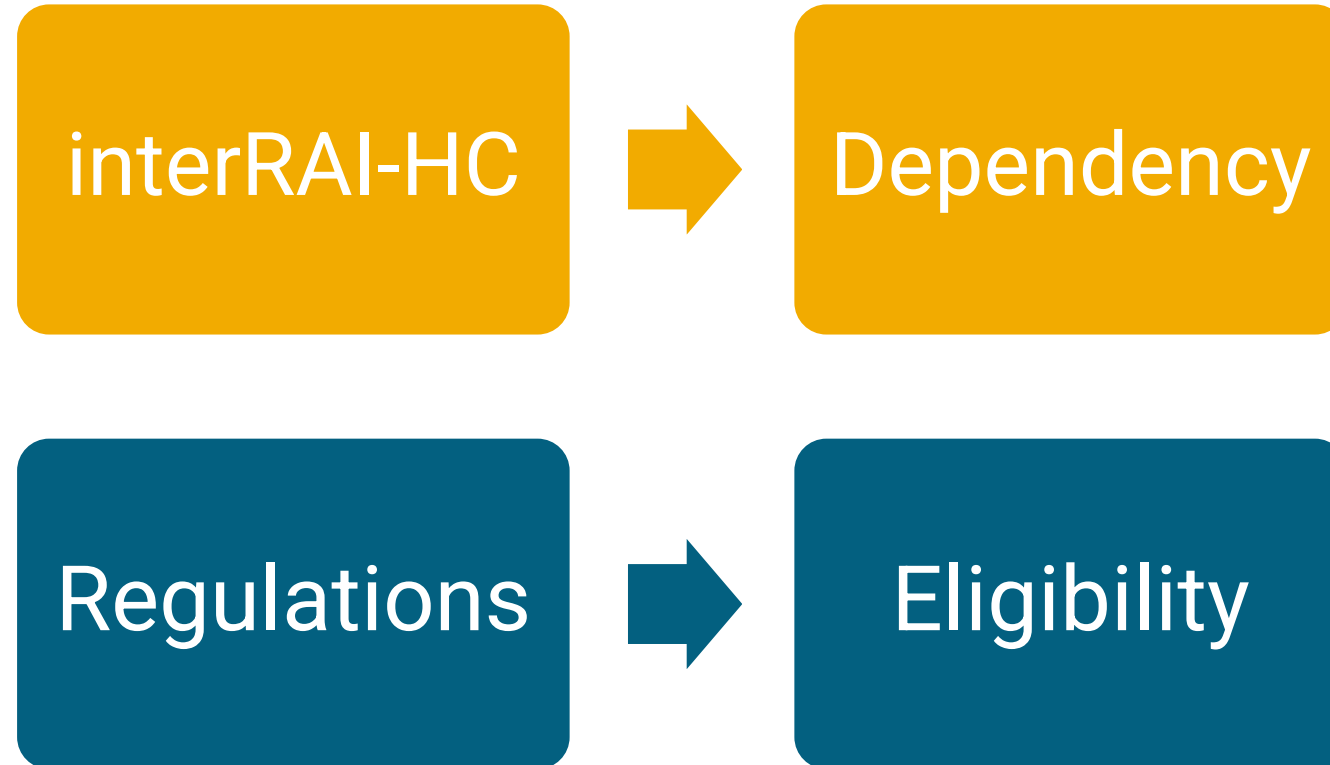
DEPT. OF HEALTH AND HUMAN SERVICES

*Helping People Live Better Lives.*



# Eligibility Determination

---



# Eligibility Determination

---

- ▶ Medicaid and Long-Term Care: Medicaid Eligibility
- ▶ Division of Developmental Disabilities: Adult NF LOC
  - ▶ Criteria specified in regulation
  - ▶ Participant or authorized representative must provide the information needed to determine NF LOC
  - ▶ Information is gathered on
    - ▶ Activities of Daily Living (ADLs)
    - ▶ Risk Factors
    - ▶ Medical Conditions/Treatments
    - ▶ Cognition

NEBRASKA

Good Life. Great Mission.

DEPT. OF HEALTH AND HUMAN SERVICES

*Helping People Live Better Lives.*

# Eligibility Determination

---

- ▶ Adults must satisfy one of four criteria to meet NF LOC eligibility:
  - ▶ A limitation in at least three ADLs and one or more risk factors;
  - ▶ A limitation in at least three ADLs and one or more medical conditions and treatments;
  - ▶ A limitation in at least three ADLs and one or more areas of cognitive limitation; or
  - ▶ A limitation in at least one ADL and at least one risk factor and at least one area of cognitive limitation.

471 NAC 44-003.01(A)

*Helping People Live Better Lives.*

**NEBRASKA**

Good Life. Great Mission.

DEPT. OF HEALTH AND HUMAN SERVICES

# Eligibility Determination

---

- ▶ Activities of Daily Living
  - ▶ Bathing
  - ▶ Continence
  - ▶ Dressing or Grooming
  - ▶ Eating
  - ▶ Mobility
  - ▶ Toileting
  - ▶ Transferring

471 NAC 44-003.01(A)(i)

*Helping People Live Better Lives.*

**NEBRASKA**

Good Life. Great Mission.

DEPT. OF HEALTH AND HUMAN SERVICES

# Eligibility Determination

---

- ▶ Risk Factors
  - ▶ Behavior
  - ▶ Frailty
  - ▶ Safety
- ▶ Medical Conditions/Treatments
  - ▶ Condition requiring observation and assessment to evaluate need for treatment modification
  - ▶ Potential for the person's medical condition to be unstable due to complexity by multiple conditions
  - ▶ Requiring at least one ongoing medical or nursing service

471 NAC 44-003.01(A)(ii)-(iii)

*Helping People Live Better Lives.*

# Eligibility Determination

---

- ▶ Cognition
  - ▶ Memory
  - ▶ Orientation
  - ▶ Communication
  - ▶ Judgment
  - ▶ Dementia

471 NAC 44-003.01(A)(iv)

*Helping People Live Better Lives.*

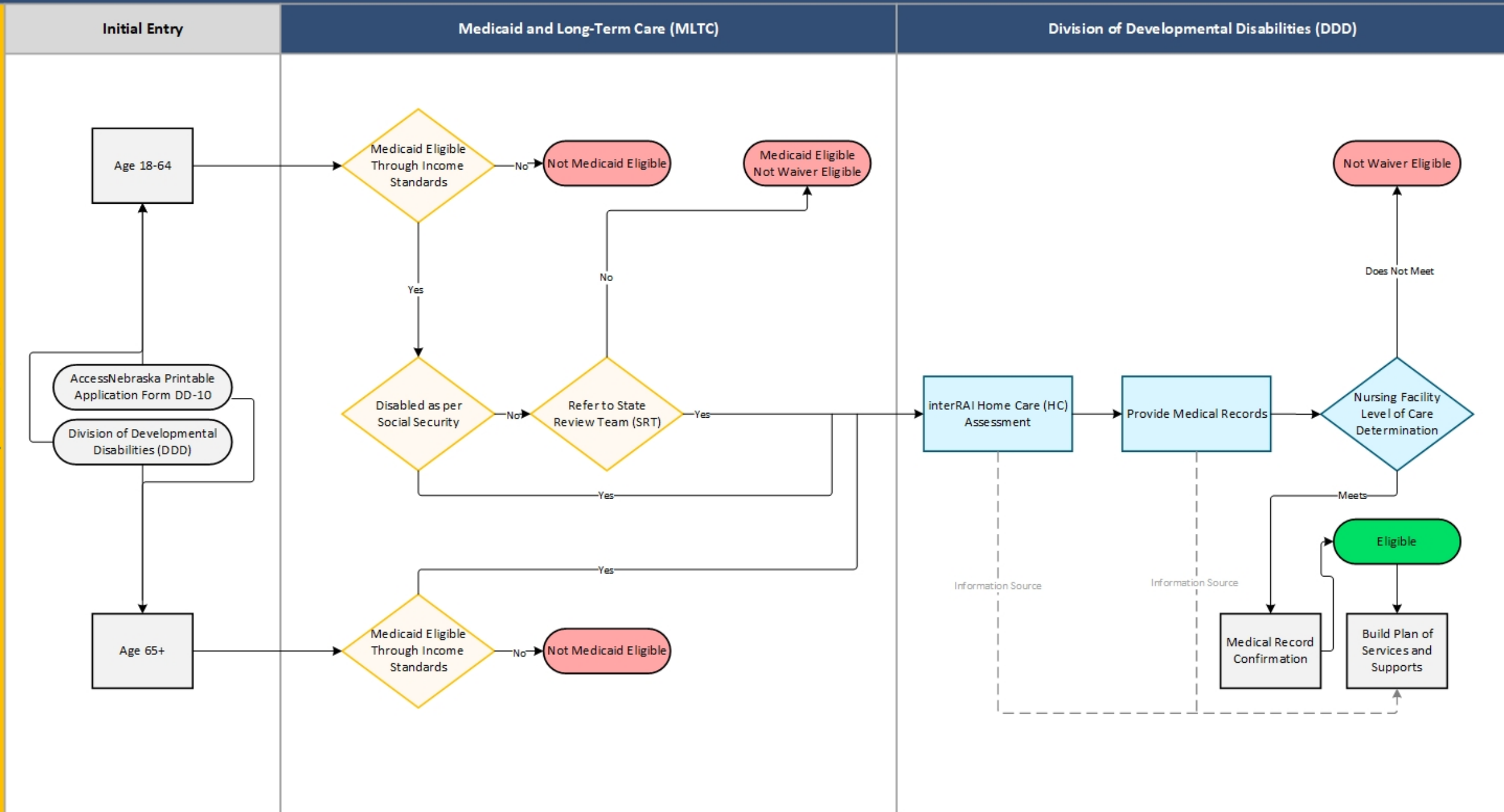
**NEBRASKA**

Good Life. Great Mission.

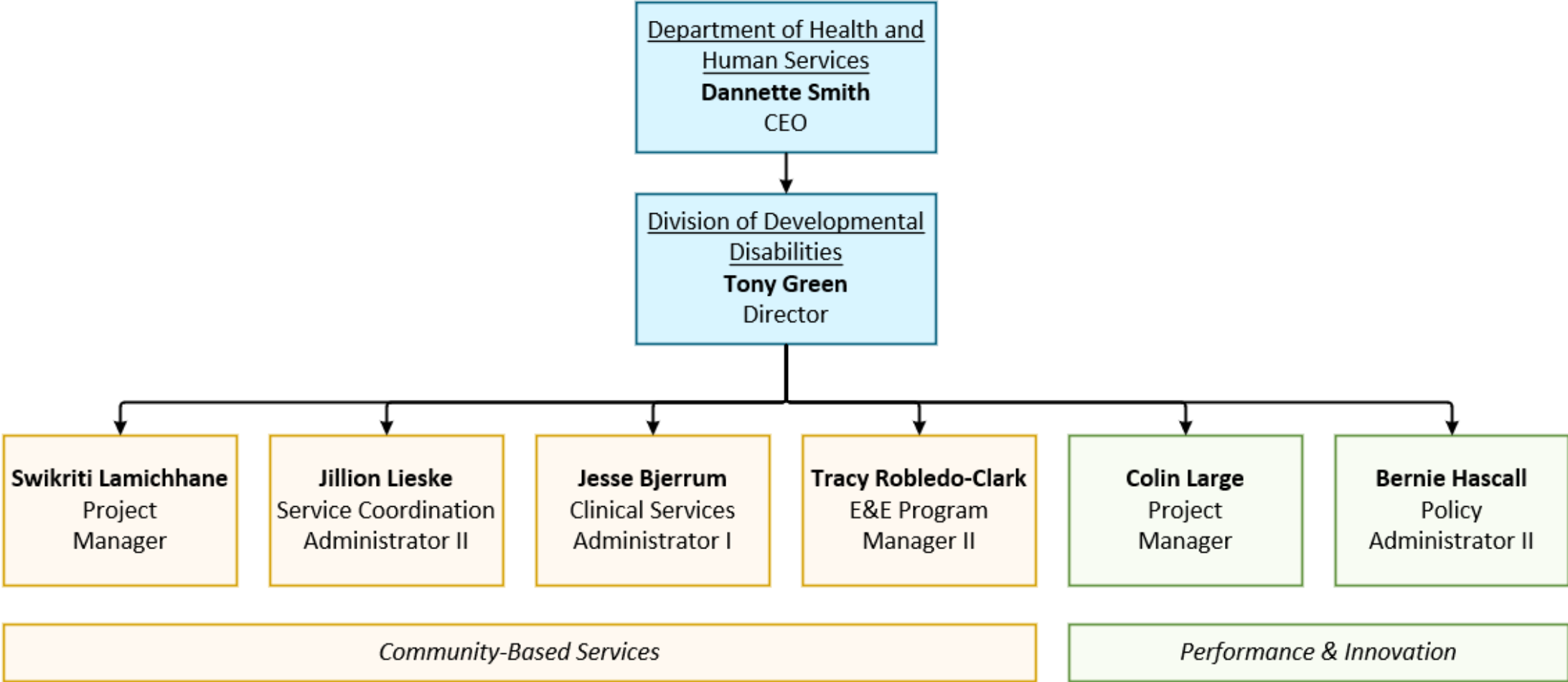
DEPT. OF HEALTH AND HUMAN SERVICES

# Nebraska Aged & Disabled Waiver Eligibility Process for Adult Age 18+

Last Updated 4/28/2021



# E&E Unit Organizational Chart



Helping People Live Better Lives.



**Questions?**

**NEBRASKA**

Good Life. Great Mission.

**DEPT. OF HEALTH AND HUMAN SERVICES**

*Helping People Live Better Lives.*

# Tracy Robledo-Clark

E&E Unit Program Manager II  
Division of Developmental Disabilities  
[tracy.robledo-clark@nebraska.gov](mailto:tracy.robledo-clark@nebraska.gov)



@NEDHHS



NebraskaDHHS



@NEDHHS

[dhhs.ne.gov](http://dhhs.ne.gov)

NEBRASKA

Good Life. Great Mission.

DEPT. OF HEALTH AND HUMAN SERVICES

*Helping People Live Better Lives.*